



FINE
CLASSICAL
CHINESE
PAINTINGS &
CALLIGRAPHY

NEW YORK
12 SEPTEMBER
2019

Sotheby's EST. 1744



FRONT COVER
LOT 1026
BACK COVER
LOT 1035
THIS PAGE
LOT 1057

FINE CLASSICAL
CHINESE PAINTINGS
& CALLIGRAPHY





THIS PAGE
LOT 1036

FINE CLASSICAL CHINESE PAINTINGS & CALLIGRAPHY

AUCTION IN NEW YORK
12 SEPTEMBER 2019
SALE N10114
10:00 AM

**ALL EXHIBITIONS FREE
AND OPEN TO THE PUBLIC**

Friday 6 September
10 am-5 pm

Saturday 7 September
10 am-5 pm

Sunday 8 September
10 am-5 pm

Monday 9 September
10 am-5 pm

Tuesday 10 September
10 am-5 pm

Wednesday 11 September
10 am-5 pm

1334 York Avenue
New York, NY 10021
+1 212 606 7000
sothebys.com

FOLLOW US @SOTHEBYS
#SOTHEBYASIANART

The artists' names recorded in this catalogue are not to be taken as unqualified attributions to the artists named. No unqualified attributions to any artist or date are made or intended. The current scholarship in the field of Chinese paintings and calligraphy does not permit unqualified statements as to authorship or date of execution. Therefore, the property in this catalogue is sold "AS IS" in accordance with the Conditions of Sale and subject to a limited guarantee of authenticity as set forth in the Terms of Guarantee. Any assistance given by Sotheby's staff to a buyer in selecting a purchase is given without prejudice to the above. Buyers are recommended to take independent professional advice on selection of purchases.

本圖錄所刊載的藝術家姓名由專家以資料判斷而定，敝公司絕不蓄意作出無證據之判定。現今中國字畫學術研究領域並不容許對作者或作品完成日期作出無條件聲明。因此，本圖錄內的拍品根據交易條款以「現況」出售，並受限於擔保條款內所記載的有限真品保證。任何蘇富比僱員給予買家之諮詢與建議均不損害以上條文的效用。買家應於登記出價前徵詢獨立專家意見。

Please note that the ivory mounts on all purchased lots will be removed after the sale. Please note all rosewood (Huanghuali) materials are now CITES applicable. You reserve the right to request for the removal of this material or proceed with the CITES permit process. Sotheby's is not responsible for any damage to the mounts which may be caused by the removal of the ivory or rosewood. Sotheby's will contact the buyers of lots containing rosewood to confirm the removal or to proceed with the application directly after the sale. If no response is provided, restricted materials will be removed for export outside of the United States.

本場拍品上的任何象牙部件將在拍品出售後被除下。目前所有出口美國含有紅木（包括黃花梨）部件的拍品均可申請CITES許可證，所以您有申請CITES許可證的權利或選擇拆除這些部件。蘇富比對除下象牙和紅木部件時可能造成的損傷不承擔任何責任。請注意在拍賣後蘇富比將會與含有紅木部件拍品的買家聯繫以確認拆除或進行CITES許可證申請。如果買家未提供回復，受出口美國境外限制的黃花梨部件將在出口運輸之前被移除。

275
YEARS
EST. 1744

Sotheby's EST. 1744



金粟
藏

SPECIALISTS AND AUCTION ENQUIRIES

For further information on lots in this auction please contact any of the specialists listed below.



Xian Fang
Head of Sales, Specialist
+1 212 894 1177
xian.fang@sothebys.com



Christina Prescott-Walker
Division Director, Asian Art
+1 212 606 7332
christina.prescott-walker@sothebys.com



Haowen Li
Administrator
+1 212 894 1177
haowen.li@sothebys.com



Molly Huang
Project Manager
+1 212 894 1177
molly.huang@sothebys.com

Arnold Chang
Senior Consultant
+1 212 894 1177

Mee-Seen Loong
Consultant
+1 212 606 7332

SALE NUMBER
N10114 "PLANET"

BIDS DEPARTMENT
+1 212 606 7414
FAX +1 212 606 7016
bids.newyork@sothebys.com

Telephone bid requests should be received 24 hours prior to the sale. This service is offered for lots with a low estimate of \$5,000 and above.

SALE ADMINISTRATOR
Haowen Li
haowen.li@sothebys.com
+1 212 894 1177
FAX +1 212 606 7018

POST SALE SERVICES
Minzee Kang
Post Sale Manager
minzee.kang@sothebys.com

FOR PAYMENT, DELIVERY AND COLLECTION
+1 212 606 7444
FAX +1 212 606 7043
uspostsaleservices@sothebys.com

CATALOGUE PRICE
\$45 at the gallery

FOR SUBSCRIPTIONS CALL
+1 212 606 7000 USA
+44 (0)20 7293 5000
for UK & Europe



CONTENTS

3	AUCTION INFORMATION
5	SPECIALISTS AND AUCTION ENQUIRIES
8	FINE CLASSICAL CHINESE PAINTINGS & CALLIGRAPHY: LOTS 1001-1071
75	HOW TO BID
76	CONDITIONS OF SALE
77	TERMS OF GUARANTEE ADDITIONAL TERMS AND CONDITIONS FOR LIVE ONLINE BIDDING
78	BUYING AT AUCTION
80	SELLING AT AUCTION SOTHEBY'S SERVICES INFORMATION ON SALES AND USE TAX IMPORTANT NOTICES
82	INTERNATIONAL DEPARTMENTS
84	INDEX OF ARTISTS

TIMELESS VISIONS

PROPERTY FROM THE COLLECTION OF
MARION AND HENRY BLOCH

LOTS 1001-1002

Henry W. Bloch (1922-2019), co-founder of H&R Block Inc., and his wife, Marion H. Bloch (1930-2013) were prominent supporters of the arts and numerous civic and philanthropic initiatives in their hometown of Kansas City, Missouri. Their legacy is particularly evident at The Nelson-Atkins Museum of Art, where the Bloch Building expansion opened in 2007 and where the couple donated their collection of Impressionist and Post-Impressionist masterworks in 2015. Under the direction of former Nelson-Atkins director Ted Coe, as well as Ted Graber, interior decorator for the Reagan White House, the Blochs assembled a wide-ranging collection that included Chinese classical paintings and works of art and English furniture, which filled their Mission Hills home for decades.

瑪麗昂與亨利·布勞克珍藏

拍品編號1001-1002

亨利·W·布勞克（1922-2019）是 H&R 布洛克稅務公司的聯合創始人。他與妻子瑪麗昂·布勞克（1930-2013）長期以來慷慨支持家鄉堪薩斯城的藝術、公民活動以及慈善事業，美名遠揚。布勞克夫婦為社會留下的眾多遺產之中，最為矚目的當屬他們為堪薩斯城納爾遜·阿特金斯藝術博物館資助的新布勞克樓。此樓於 2007 年落成，2015 年他們又捐贈了一批重要的印象派及後印象派收藏。布勞克夫婦熱愛藝術，在納爾遜藝術館資深專家們的指導下，他們的藏品涵蓋了中國古代繪畫、中國藝術品、英國家具等多種門類，伉儷二人幾十年來一直與其珍藏的藝術品朝夕相處。



1001

ZHANG XIONG 1803-1886

FLOWERS AND LANDSCAPE

ink and color on paper, a set of ten framed fan leaves

- (1) signed *Zixiang Zhang Xiong*, with one seal, *chen xiong*
- (2) signed *Yuanyang hu waishi Zhang Xiong*, with one seal, *zi xiang*
- (3) signed *Zixiang Zhang Xiong*, with one seal, *zi xiang*
- (4) signed *Zixiang Zhang Xiong*, with one seal, *zi xiang*

- (5) signed *Zixiang*, with one seal, *zi xiang shu hua*
- (6) signed *Zixiang Zhang Xiong*, with one seal, illegible
- (7) signed *Zixiang*, with one seal, *zi xiang*
- (8) signed *Zhang Xiong*, with one seal, *zi xiang shu hua*
- (9) signed *Zhang Xiong*, with one seal, *zi xiang*
- (10) signed *Zhang Xiong*, with one seal, *chen xiong*

each 19 by 52.3 cm. 7½ by 20⅝ in. (10)

\$ 12,000-18,000

張熊 花卉山水 設色紙本 十開扇框

- (一) 款識：子祥張熊寫。鈐印：臣熊
- (二) 款識：鴛鴦湖外史張熊。鈐印：子祥
- (三) 款識：子祥張熊寫。鈐印：子祥
- (四) 款識：玉砌秋痕。子祥張熊。鈐印：子祥
- (五) 款識：擬徐崇嗣沒骨法。子祥。鈐印：子祥書畫
- (六) 款識：王忘庵有此本，因擬其意。子祥張熊。鈐印：一印漫漶不辨
- (七) 款識：秋堦艷卉。傲白雲溪外史設色法。子祥。鈐印：子祥
- (八) 款識：芭蕉葉大梔子肥。張熊寫。鈐印：子祥書畫
- (九) 款識：張熊作。鈐印：子祥
- (十) 款識：仿甌香館法。張熊。鈐印：臣熊



1001

QIAN HUI'AN 1833-1910

IMMORTALS

ink and color on silk, a set of twelve framed

(1) - (11) signed *Qingxi qiaozi Qian Hui'an*, each leaf inscribed, with two seals of the artist, *ji sheng* (2), *ji sheng* (11)

(12) signed *Qingxi qiaozi Qian Hui'an*, dated *bingzi* (1876), inscribed, with one seal of the artist, *ji sheng*

each 30.4 by 25 cm. 12 by 9 7/8 in. (12)

\$ 6,000-8,000

錢慧安 仙人圖集 設色絹本 十二
開鏡框

(一) 款識：歡天喜地。南田翁天資超妙，用墨獨具靈巧秀逸之趣，為當代第一，學之正可也。清谿樵子錢慧安。鈐印：吉生

(二) 款識：寒江獨釣。樵桃花盒主原本於春申浦上。清谿樵子錢慧安。鈐印：吉生

(三) 款識：一色杏花紅十里，狀元歸去馬如飛。畧參陳白陽山人用筆，學於春申浦上，清谿樵子錢慧安。鈐印：吉生、吉生

(四) 款識：護籬小犬吠生客，曝背老翁調幼孫。仿新羅山人原本，清谿樵子錢慧安。鈐印：吉生

(五) 款識：東山絲竹。清谿樵子錢慧安。鈐印：吉生、吉生

(六) 款識：玉壺買春，賞雨茆屋。清谿樵子錢慧安。鈐印：吉生

(七) 款識：籃輿八社。畧參錦衣指揮使呂廷振原本學於海上，清谿樵子錢慧安寫意。鈐印：吉生

(八) 款識：漁家樂趣。仿呂廷振原本於海上。清谿樵子錢慧安。鈐印：吉生

(九) 款識：驢背田翁傍晚圍，繞身兒女笑轟雷。進城完納宦租了，買得泥嬰耍貨來。仿新羅山人筆法，清谿樵子錢慧安。鈐印：吉生

(十) 款識：崔家孝婦。仿新羅山人原本，清谿樵子錢慧安。鈐印：吉生

(十一) 款識：曾見新羅山人有此本。於春申浦上客次，清谿樵子錢慧安。鈐印：吉生

(十二) 款識：東籬秋艷。丙子（1876）花朝，清谿樵子錢慧安。鈐印：吉生







1003



1004

1003

ZHANG QIA (1718-?)

LANDSCAPE

ink on paper, hanging scroll

signed *Zhang Qia*, inscribed with a poem, and one seal of the artist, *zhang qia*

59 by 28.3 cm. 23¼ by 11⅞ in.

PROVENANCE

Robert H. Ellsworth (1929-2014) collection
Sotheby's New York, Fine Chinese Paintings,
March 18, 1997, lot 31

Consignor received the painting as a wedding
present from Robert H. Ellsworth in 1965.

\$ 7,000-9,000

張洽 山水 水墨紙本 立軸

款識：灌木入雲，石淙冷然。是何乾坤，
有此林泉。張洽。鈐印：張洽

來源：
安思遠舊藏
紐約蘇富比，中國書畫，1997年3月18
日，拍品編號31

注：安思遠於1965年將此畫作為新婚禮物
贈予委託方。

1004

**ZHU ANGZHI (1764-AFTER
1841)**

LANDSCAPE

ink on gold-dusted paper, hanging scroll

signed *Angzhi*, with one seal of the artist, *ang zhi*

135.2 by 37.7 cm. 53¼ by 14⅞ in.

\$ 5,000-7,000

朱昂之 山水 水墨灑金箋 立軸

款識：古木凌霄漢，山容更峭然。仿梅道人筆，昂之。鈐印：昂之

1005

WU LI 1632-1718

WILD GESE OVER A WINTER STREAM

ink and color on paper, hanging scroll

signed *Mojing daoren Li*, inscribed with a poem, with two seals of the artist, *wu li, yan ling*
With one collector's seal of Bi Long (18th Century), *bi jian fei mi ji yin*; two collector's seals of Wu Yun (1811-1883), *wu yun ping zhai guo yan jin shi wen zi shu hua yin, di qiu shen ding*

46.6 by 27.3 cm. 18¾ by 10¾ in.

PROVENANCE

Christie's Hong Kong, Fine Classical Chinese Paintings and Calligraphy, October 29, 2001, lot 391

\$ 15,000-25,000

吳歷 楓江群雁 設色紙本 立軸

釋文：楓江水冷羣歸早，夢熟蘆花秋未杪。一雁不眠來尋月，波光浮動天將曉。

款識：墨井道人歷并題。鈐印：吳歷、延陵

鑒藏印：（畢瀧）畢潤飛秘笈印
（吳雲）吳雲平齋過眼金石文字書畫印、
邃秋審定

來源：

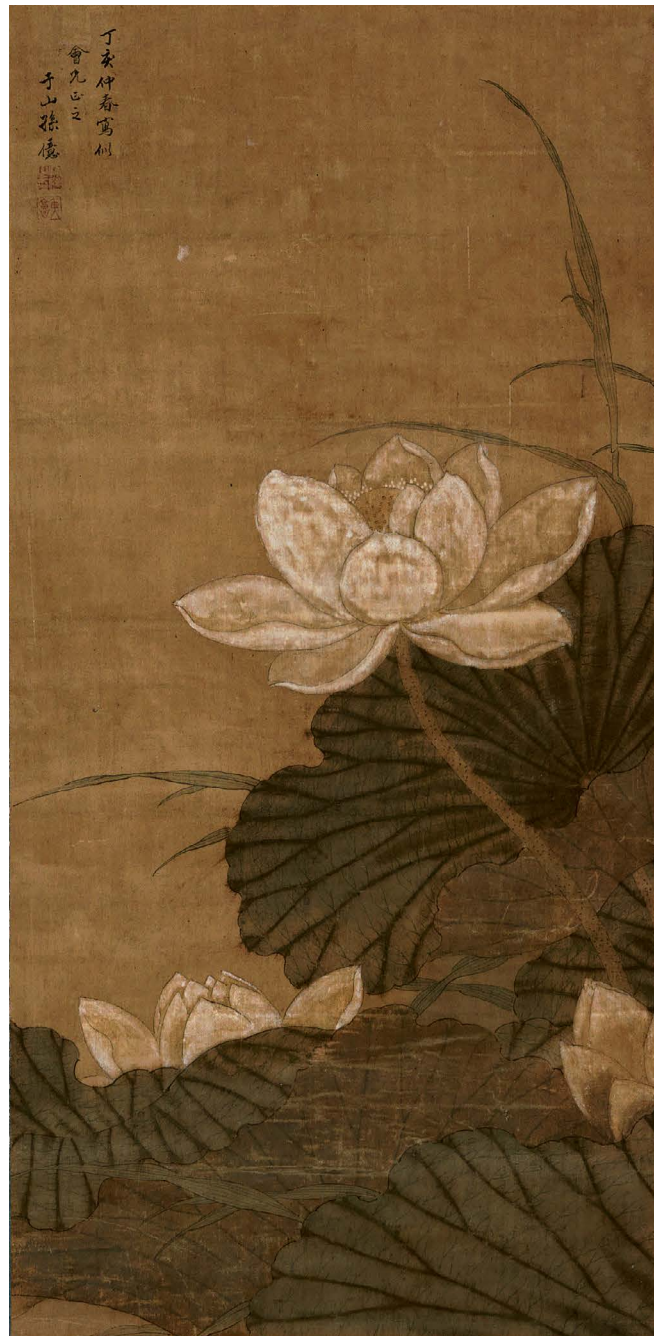
香港佳士得，中國古代書畫，2001年10月29日，拍品編號391



1005



1006



1007

1006

ZHAO ZHICHEN 1781-1852

CHRYSANTHEMUMS AND ROCK

ink and color on paper, hanging scroll

signed *Cixian Zhao Zhichen*, dated *dingyou* (1837), the first lunar month, with one seal of the artist, *zhi chen*

121.9 by 28.9 cm. 48 by 11³/₈ in.

\$ 5,000-7,000

趙之琛 菊花奇石 設色紙本 立軸

款識：虞翁道兄雅屬即政。丁酉（1837）上元後二日，次閑趙之琛。鈐印：之琛

1007

SUN YI (1638-AFTER 1712)

LOTUS

ink and color on satin, hanging scroll

signed *Yushan Sun Yi*, dated *dinghai* (1707), the second lunar month, with two seals of the artist, *sun yi zhi yin, wei yong*

59 by 28.5 cm. 23¼ by 11¼ in.

\$ 3,000-5,000

孫億 荷花 設色綾本 立軸

款識：丁亥（1707）仲春，寫似會兄正之，于山孫億。鈐印：孫億之印、維庸

1008

GAO QIPEI 1672-1732

CRABS

ink on paper, hanging scroll

signed *Qipei*, dated the sixteenth day of the seventh lunar month, inscribed with a poem, with three seals of the artist, *yan tian sheng huo, mei hua shu wu, jiu zhong xian*

With two collector's seals of Zhu Qian (Qing Dynasty), *zhi chen jian shang, ding chou bing xian hou de*, and one other collector's seal, *wu yue shen ding*

101.9 by 27.3 cm. 40¼ by 10¾ in.

EXHIBITED

Discarding the Brush: Gao Qipei (1660-1734) and the Art of Chinese Finger Painting, Rijksmuseum Amsterdam, December 12, 1992-February 28, 1993

LITERATURE

Klaus Ruitenbeck (Ed.), *Discarding the Brush: Gao Qipei (1660-1734) and the Art of Chinese Finger Painting*, Rijksmuseum Amsterdam, 1992, p. 173, pl. 46

PROVENANCE

Sotheby's New York, Fine Chinese Paintings, November 30, 1988, lot 62

\$ 7,000-9,000

高其佩 螃蟹 水墨紙本 立軸

釋文：誰呼公子是無腸，玉賢金膏體勢強。八跪超塵蜻曉霧，二敖金美飽秋霜。何曾有□依芦浦，□似縱橫到荻塘。諄囑文人休錯認，須憶毫裡籀雌黃。

款識：時在新秋既望，其佩畫并題于對松草閣中。鈐印：硯田生活、梅花書屋、酒中仙

鑒藏印：（朱潛）穉臣鑒賞、丁丑兵燹後得
武越審定

展覽：

去筆存墨：高其佩（1660-1734）和中國指畫藝術，荷蘭國立博物館，1992年12月12日—1993年2月28日

出版：

魯克思（編），去筆存墨：高其佩（1660-1734）和中國指畫藝術，荷蘭國立博物館，1992年，第173頁，圖版46

來源：

紐約蘇富比，中國書畫，1988年11月30日，拍品編號62



1008



1009

1009

ATTRIBUTED TO CHEN RUYAN
MAID PLAYING PIPA

ink and color on silk, framed

with a spurious signature of *Chen Ruyan*, dated *dingmao*, and one seal, *shu zi*

144.7 by 100.3 cm. 57 by 39½ in.

\$ 10,000-20,000

陳汝言（款）侍女琵琶 設色絹本 鏡框

款識：丁卯仲夏吳下陳汝言寫。鈐印：未子

1010

PAN GONGSHOU 1741-1794
LANDSCAPE AFTER WANG HUI

ink on silk, hanging scroll

signed *di Gongshou*, dated *wuxu* of the *Qianlong* reign (1778), the twelfth lunar month, with a dedication, and three seals of the artist, *tai yun zi, gong shou, gong shou*

83.5 by 42 cm. 32¾ by 16⅝ in.

\$ 5,000-7,000

潘恭壽 仿王翬山水 設色絹本 立軸

釋文：（一）凡作畫遇興到時即運筆潑墨，頃刻間煙雲變化，峯巒萬重；蒼茫淋漓，諸法畢具，真若有神助者。此為天真，得天真而成逸品。逸品在神品之上。所謂神品者，人力所能至也。所謂逸品者，在興會時偶合也。癸丑夏五，王翬并識。鈐印：臺筠子

（二）山列君臣，樹分賓主，互為映帶，位置天然。凡作一草一木而不相顧者，雖具千岩萬壑，則滿幅俱錯。正如路人雜沓有何繾綣耶。鈐印：五月廿四日，烏目山人王翬又書。鈐印：恭壽

款識：偶見石谷真蹟，因臨此本為贈景山四哥，筆墨陋劣不逮古人。乃題識亦仿為之，真可發大笑也。乾隆戊戌（1778）冬杪，弟恭壽記。鈐印：恭壽

1011

ANONYMOUS
SCHOLAR GATHERING

ink and color on silk, hanging scroll

210.8 by 106 cm. 83 by 41 ¾ in.

\$ 10,000-20,000

無款 文會圖 設色絹本 立軸



1010



1011



1012

1012

ANONYMOUS

SPARROWS

ink on silk, album leaf

21.6 by 22.9 cm. 8½ by 9 in.

\$ 6,000-8,000

無款 枯枝寒雀 水墨絹本 鏡片

1013

WANG JIQIAN (C. C. WANG)

1907-2003

LANDSCAPE

ink and color on paper, framed

signed *Jiqian*, dated *jisi* (1989), December 5,
with one seal of the artist, *wang ji qian xi*

36 by 36.3 cm. 14¼ by 14¼ in.

EXHIBITED

C.C. Wang: Old Master, New Ideas, E&J Frankel
Ltd., New York, September 21-November 2, 1995

LITERATURE

C.C. Wang: Old Master, New Ideas, E&J Frankel
Ltd., 1995, no. 10, p. 18

PROVENANCE

E&J Frankel, Ltd., New York

\$ 4,000-6,000

王己千 墨云遮山 設色紙本 鏡框

款識：己巳（1989）十二月五日，己千。
鈐印：王季遷鈐

展覽：

王季遷—老生新意，紐約 E&J Frankel 有
限公司，1995年9月21日—11月2日

出版：

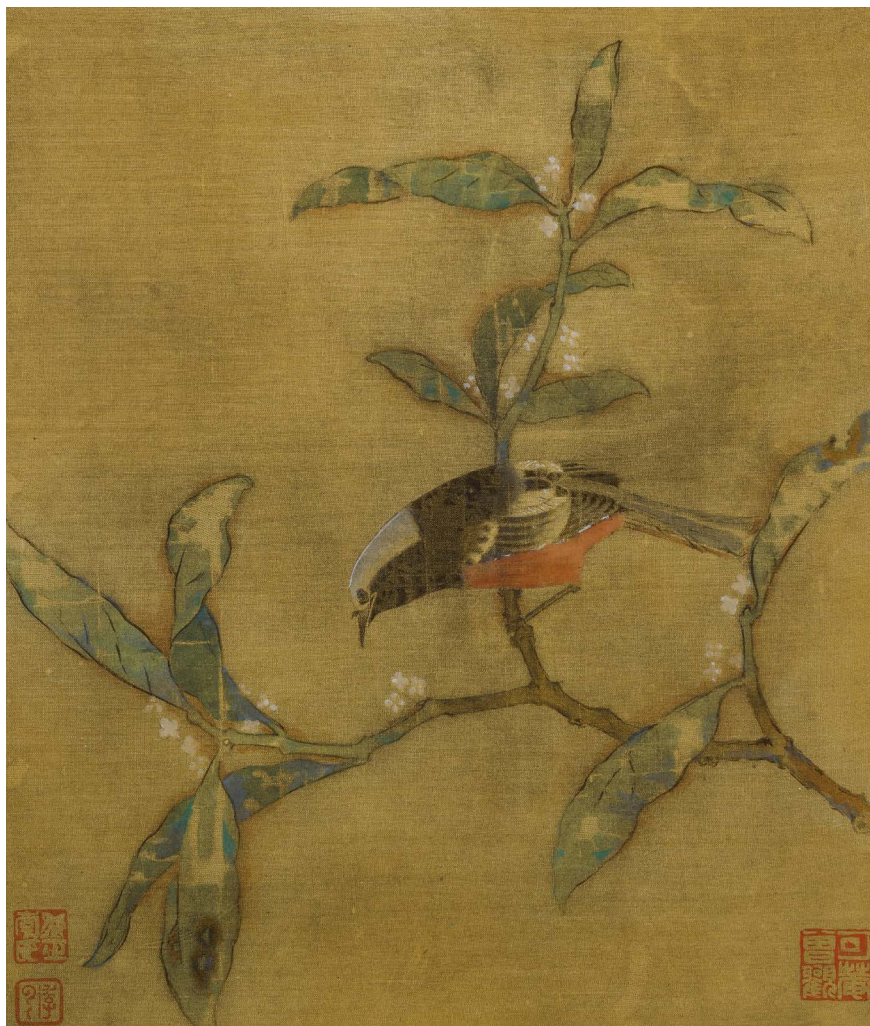
《王季遷—老生新意》，紐約 E&J Frankel
有限公司，1995年版，編號10，頁18

來源：

紐約 E&J Frankel 有限公司



1013



1014

1014

ANONYMOUS

BIRD ON BOUGH

ink and color on silk, framed

26 by 22.2 cm. 10¼ by 8¾ in.

LITERATURE

Arthur Waley, *An Introduction to the Study of Chinese Painting*, London: Ernest Benn Limited, 1923, Pl. XLI

Roger Fry, Bernard Rackham et. al., *Chinese Art: An Introductory Review of Painting, Sculpture, Ceramics, Textiles, Bronzes, Sculpture, Jade Etc.*, London: B. T. Batsford Ltd., 1925, p. 10, pl. 5
Arnold Silcock, *Introduction to Chinese Art and History*, New York: Oxford University Press, 1948, p. 171, pl. XIX

Arthur Waley, *An Introduction to the Study of Chinese Painting*, NY: Grove Press, Inc., reprinted 1958 (first published 1923), Pl. XLI
Laurence Binyon, *Painting in the Far East: An Introduction to the History of Pictorial Art in Asia, Especially China and Japan*, New York: Dover Publications, Inc., third edition, (first

edition 1959), pl. Frontispiece

Finlay Mackenzie, *Chinese Art*, London: Spring Books, 1964 (first edition 1961), p. 40, pl. 41

Soame Jenyns, *A Background to Chinese Painting*, New York: Schocken Books, 1966, p. 106, pl. XXI

Roger Fry, Bernard Rackham et. al., *Chinese Art: An Introductory Handbook to Painting, Sculpture, Ceramics, Textiles, Bronzes & Minor Arts*, London: B. T. Batsford Ltd., 1969, pl. 4

\$ 180,000-280,000

無款 枝頭小鳥 設色絹本 鏡框

出版：

亞瑟·偉利，《中國畫研究概論》，倫敦厄尼斯特·本恩出版社，1923年，圖版XLI

羅傑·福萊、伯納德·萊克漢姆等，《中國藝術：繪畫、雕塑、陶瓷、織品、青銅、雕塑、玉器等之介紹》，倫敦比特佛出版社，1925年，第10頁，圖版5

阿諾德·史爾科克，《中國藝術與歷史概論》，紐約牛津大學出版社，1948年，第171頁，圖版XIX

亞瑟·偉利，《中國畫研究概論》，格羅夫出版社，1958年重印版（初版1923年），圖版XLI

勞倫斯·賓揚，《遠東繪畫：一個對亞洲，特別是中國及日本，圖像藝術的介紹》，紐約多佛出版社，第三版，（1959年初版），扉頁圖版

芬利·麥肯齊，《中國藝術》，倫敦春季圖書出版社，1964年（初版1961年），第40頁，圖版41

索姆·傑寧斯，《中國畫介紹》，紐約蕭肯印刷社，1966年，第106頁，圖版XXI
羅傑·福萊、伯納德·萊克漢姆等，《中國藝術：繪畫、雕塑、陶瓷、織品、青銅及其他之入門手冊》，比特佛出版社，1969年，圖版6



1015

1015

ANONYMOUS

SCHOLAR WRITING ON PHOENIX TREE
LEAF

ink and color on silk, framed

133.4 by 90.8 cm. 52½ by 35¾ in.

\$ 12,000-18,000

無款 桐葉題詩 設色絹本 鏡框

1016

ANONYMOUS

IMMORTAL HOLDING EDICT

ink and color on silk, framed

with one collector's seal, *bi shu shan zhuang*

Accompanied with an old photo from
Rijksmuseum publication in 1926.

173.4 by 106.7 cm. 68¼ by 42 in.

\$ 10,000-15,000

無款 仙人奉旨 設色絹本 鏡框

鈐印：避暑山莊

注：附有1926年荷蘭國立博物館出版舊
照。



1016

1017

DONG QICHANG 1555-1636

LANDSCAPE AND CALLIGRAPHY

ink on gold paper, album of twelve leaves

(1, 3, 5, 7, 9 and 11) signed *Xuanzai*, with one seal of the artist, *dong qi chang yin* (5)

(2, 4, 6, 8 and 10) signed *Qichang*, with one seal of the artist, *dong xuan zai shi*

(12) signed *Dong Qichang*, with one seal of the artist, *dong xuan zai shi*

each 25.4 by 19.1 cm. 10 by 7½ in. (12)

\$ 100,000-150,000

董其昌 書畫合璧 設色金箋 十二開冊

(一) 款識：玄宰寫。鈐印：董其昌印

(二) 釋文：山中人兮芳杜若，飲石泉兮蔭松柏。款識：其昌。鈐印：董玄宰氏

(三) 款識：玄宰畫。鈐印：董其昌印

(四) 釋文：月明全見蘆花白，風起遙聞杜若香。款識：其昌。鈐印：董玄宰氏

(五) 釋文：玄宰畫。鈐印：董其昌印

(六) 釋文：藍水遠從千澗落，玉山高併兩峰寒。款識：其昌。鈐印：董玄宰氏

(七) 款識：玄宰寫。鈐印：董其昌印

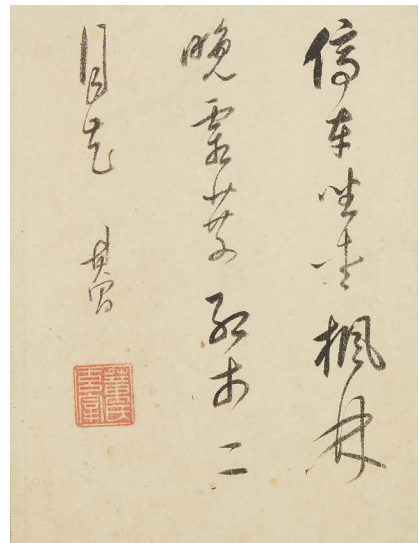
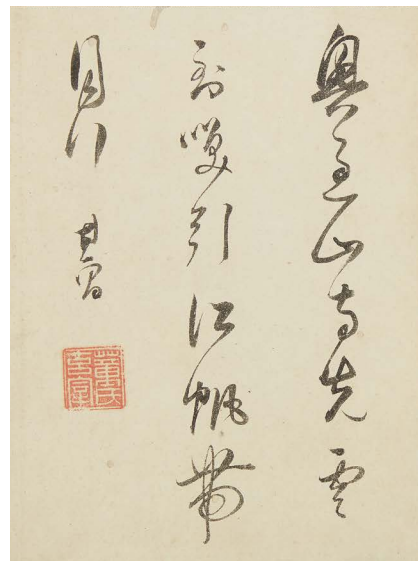
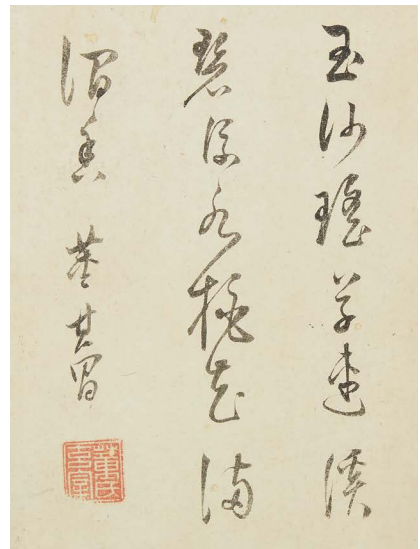
(八) 釋文：玉沙瑤草連溪碧，流水桃花滿澗香。款識：董其昌。鈐印：董玄宰氏

(九) 款識：玄宰畫。鈐印：董其昌印

(十) 釋文：興過山寺先雲到，暎引江帆帶月行。款識：其昌。鈐印：董玄宰氏

(十一) 款識：玄宰寫。鈐印：董其昌印

(十二) 釋文：停車坐愛楓林晚，霜葉紅於二月花。款識：其昌。鈐印：董玄宰氏



1017



山中人兮芳杜
若飲石泉兮
松柏

甘泉

王守仁

A vertical calligraphic inscription in black ink on a light background. The characters are written in a cursive style. The text is a poem or a set of lyrics. A red seal is visible at the bottom left.



目明全見蒼生
白風報急叩

杜若香

王守仁

王守仁

A vertical calligraphic inscription in black ink. The text is a poem or a set of lyrics. A red seal is visible at the bottom left.



暮水色從千石
落石心高石
學石

甘泉

王守仁

A vertical calligraphic inscription in black ink. The text is a poem or a set of lyrics. A red seal is visible at the bottom left.





1018

1018

ANONYMOUS

ORCHID PAVILION GATHERING

ink and color on silk, handscroll

Colophons by Song Bolu (1854-1932), signed *Dihua Song Bolu*, dated *dingwei* (1907), the seventh lunar month, with one seal, *zhi dong*; Tan Yankai (1880-1930), signed *Yankai*, dated *gengshen*, the sixth day of the tenth lunar month (November 16, 1920), with one seal, *tan yan kai yin*

Titleslip on mounting border signed *Yunchang*, dated *gengshen*, the eleventh day of the ninth lunar month (October 22, 1920), with one seal, *yi jun suo zuo*

With two collectors' seals, *yi wang zhi zhang*, *huang nan*

33 by 305 cm. 13 by 120 in.

\$ 10,000-15,000

無款 蘭亭雅集 設色絹本 手卷

題跋：（宋伯魯）昔王摩詰（詳文略）言之長也。丁未（1907）七月厲迪化宋伯魯觀并識。鈐印：芷洞

（譚延闓）桂叢世丈攜此卷到京師，延闓得縱觀今十餘年矣。兼民我兄既重裝之復以見示，使人憶當時事，忽忽如昨日。夜窗風雨才根觸百端，令他年見之不知又作何感想，惘惘記此歸之。庚申（1920）十月六日，延闓。鈐印：譚延闓印

引首：蘭亭合璧。

題裱邊：蘭亭合璧。己未（1919）晉中兼公重裝於京師，庚申（1920）重九後二日，運長題。鈐印：翊君所作

鑒藏印：益王之章、潢南

1019

ATTRIBUTED TO QIU YING

LANDSCAPE WITH PAVILION

ink and color on silk, hanging scroll

with a spurious signature, *Shizhou Qiu Ying*, and one spurious seal, *shi zhou*

163.8 by 79.3 cm. 64½ by 31¼ in.

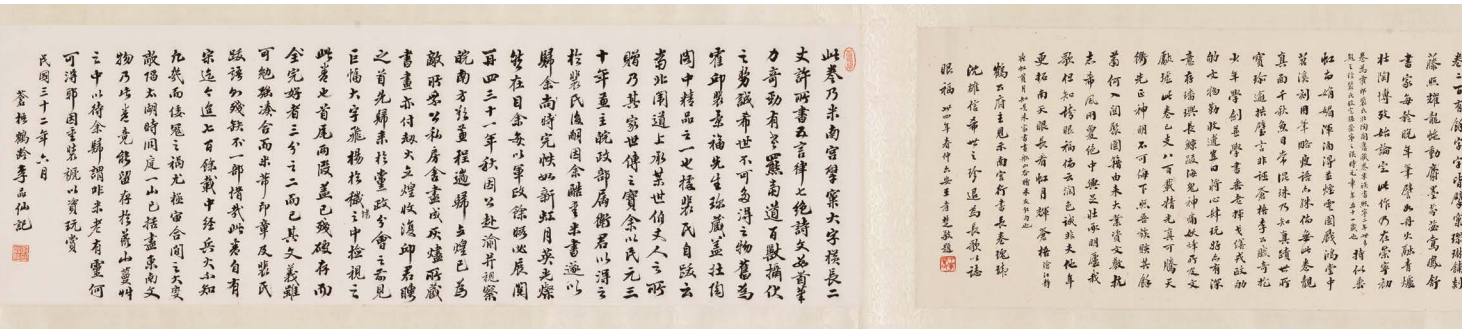
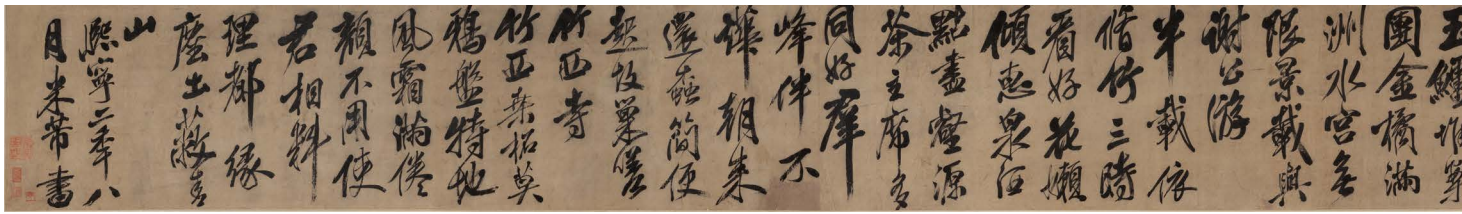
\$ 12,000-18,000

仇英（款） 仙山樓閣 設色絹本 立軸

款識：十洲仇英製。鈐印：十洲



1019



1020

1020

ATTRIBUTED TO MI FU
POEM IN RUNNING SCRIPT

ink on paper, handscroll

with a spurious signature of Mi Fu, and one spurious seal, *xiang yang ye lao*
Inscriptions by Pei Jingfu (1854-1924), signed *Pei Jingfu*, with two seals, *ruo guan deng chao*, *huo qiu*; Wang Xiaochu (1903-1979), signed *Lu'an Wang Xiaochu*, dated the thirty-fourth year of the Republic (1945), the second lunar month, with one seal, *wang xiao chu yin*; Li Pinxian (1890-1987), signed *Cangwu Heling Li Pinxian*, dated the thirty-second year of the Republic (1943), the sixth lunar month, with two seals, *cang wu ge*, *li pin xian yin*
With three collector's seals of Pei Jingfu, *pei jing fu shou ru zhuang tao ge mi ji*, *xia an bao ci guo yu ming zhu jun ma*, *huo qiu pei shi shu hua fu yin xin*, one illegible; and one collector's seal of Li Pinxian, *he ling*

50.8 by 975.3 cm. 20 by 384 in.

LITERATURE

Pei Jingfu, *Zhuangtao Ge Shuhua Lu*, Xue Yuan Publishing House, 2006, pp.135-136

\$ 70,000-90,000

米芾（款）行書《澗州甘露寺》
水墨紙本 手卷

釋文：澗州甘露寺。色政重重構（…釋文略…）塵土蔽青山。

款識：熙寧二年八月米芾書。鈐印：襄陽野老

題跋：（裴景福）此卷（…文字缺失…）生於皇祐三年辛卯（1151），卒於大觀元年丁亥（1107），年五十七，此作熙寧二年八月年僅十九，絕不能作是書。且後押「襄陽野老」章，更不合咸，疑其偽。余曰果能作是書，亦絕不至亂書年月，留此罅漏。此必「崇寧」誤作「熙寧」也。崇寧二年（1103），元章年五十三，則書與年俱合矣。古人於年月甲子往往誤書，梁退庵題石田《水墨葡萄軸》，歷引白石翁真跡誤書國號甲子者不一而足。予數十年來屢有此誤，友人中亦往往如此。以我例人，以今例古，未嘗不同。此等神跡，有目共賞，不學者，不知其誤也。學者，若因此一字之誤而棄之，則真矣。昔者吾友墨守疑年錄歷代名人年（譜）為枕中秘，

放失名蹟不少，考訂之難如此。予於賞鑒每有妙悟，殊難為鈍根人道也。凡（…文字缺失…）執拗，拘於一孔之見。果能迎刃而解，必確不可易始足鑒（…文字缺失…）。十四日，裴景福書於耕善莊南屋。鈐印：冠冕登朝、霍邱

（王孝楚）南宮書法當世無（…釋文略…）米友仁句也。鶴公府主見示南宮行書長卷，瑰瑋沉雄，信稀世之珍。退為長歌，以誌眼福。卅四年（1945）春仲，六安王孝楚敬題。鈐印：王孝楚印

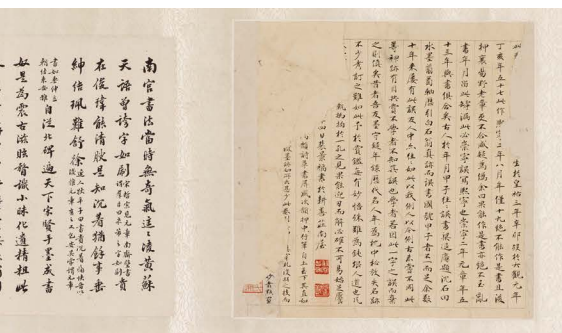
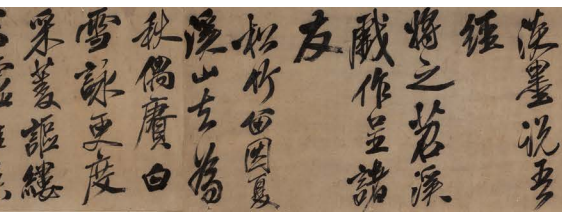
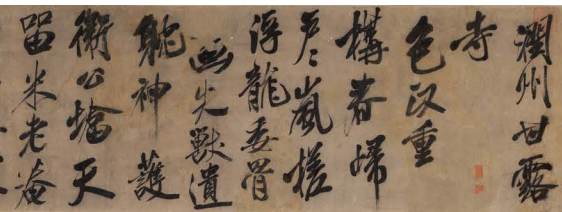
（李品仙）此卷乃米南宮櫟窠大字（…釋文略…）非米老有靈，何可得焉。因重裝褙以資玩賞。民國三十二年（1943）六月。蒼梧鶴齡李品仙記。鈐印：蒼梧閣、李品仙印

鑒藏印：（裴景福）裴景福收入壯陶閣秘籍、朕閣寶此過於明珠駿馬、霍邱裴氏書畫府印信、一印殘缺

（李品仙）鶴齡

出版：

裴景福，《壯陶閣書畫錄》上，學苑出版社，2006年，第135-136頁



1021

LIANG TONGSHU 1723-1815

CALLIGRAPHY IN RUNNING SCRIPT

ink on paper, mounted for framing

signed Shanzhou Liang Tongshu, at the age of seventy-seven sui, with two seals of the artist, liang tong shu yin, liang yuan ying shi

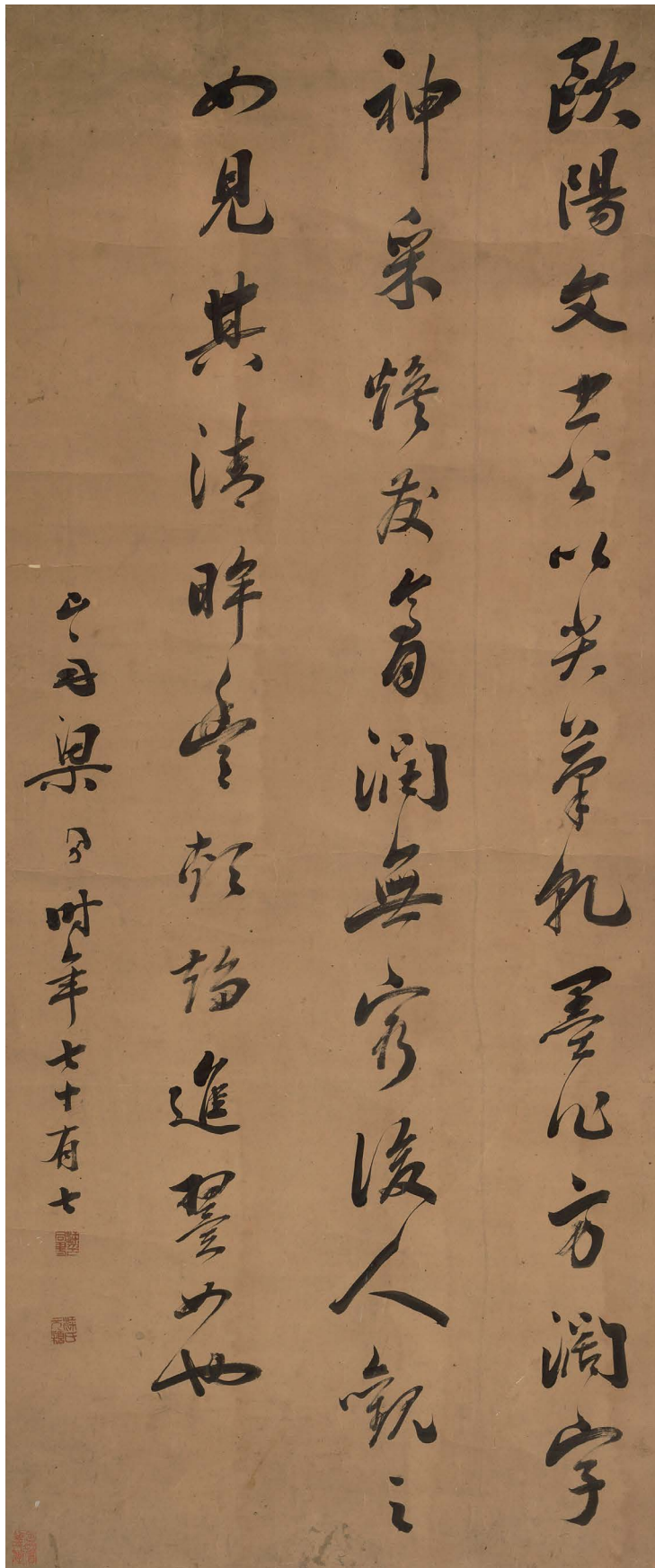
99 by 41.5 cm. 39 by 16³/₈ in.

\$ 8,000-12,000

梁同書 行書節錄蘇軾論書 水墨紙本 鏡片

釋文：歐陽忠公以尖筆乾墨作方闊字，神采煥發，膏潤無窮。後人觀之，如見其清眸豐頰，趨進翼如也。

款識：山舟梁同書，時年七十有七。鈐印：梁同書印、梁元穎氏



1021

PROPERTY FROM THE COLLECTION OF NAOMI AND GARY GRAFFMAN LOTS 1022-1026

娜奧米與加里·格拉夫曼珍藏 拍品編號1022-1026

Gary Graffman is a world-renowned American classical pianist and music educator. He was the President and Director of the Curtis Institute of Music from 1986-2006, where he still teaches, and his students include Lang Lang and Yuja Wang. He and his late wife Naomi,

a painter, had a deep interest in Chinese art and their collection of classical paintings and calligraphy as well as early Chinese works of art, still expanding, reflect this extraordinary aesthetic, curiosity and knowledge.

加里·格拉夫曼是一位享譽世界的美國古典鋼琴大師及音樂教育家。他於1986-2006年間曾任柯蒂斯音樂學院主席及院長，他至今仍在柯蒂斯任教，他的學生包括朗朗、王羽佳。加里剛去世的夫人娜奧米是一位畫家。格拉夫曼伉儷對中國藝術情有獨鐘，通過他們的中國書畫及中國早期藝術品收藏，可以讓我們管窺二人不凡的藝術鑒賞力、審美趣味及淵博的知識儲備。



1022

1022

BIAN SHOUMIN 1684-1752

LOTUS ROOT AND SEEDPODS

ink on silk, framed fan leaf

signed *Weijian jushi*, inscribed with a poem, and three seals of the artist, *shou min, yi gong, wei jian ju shi*

With one collector's seals, *zhu jing yan zhai*

17.8 by 52.7 cm. 7 by 20¾ in.

PROVENANCE

Christie's Hong Kong, Fine Classical Chinese Paintings, April 27, 1997, lot 226

\$ 6,000-8,000

邊壽民 蓮藕蓮蓬 水墨絹本 扇框

釋文：南人家水曲，種藕是良謀。落得好蒼看，秋來子亦收。

款識：葦間居士。鈐印：壽民、頤公、葦間居士

鑒藏印：竹景研齋

來源：

香港佳士得，中國古代書畫，1997年4月27日，拍品編號226

DONG QICHANG 1555-1636

HUANG TINGJIAN'S POEM IN
RUNNING SCRIPT

ink on gold-dragon patterned paper, hanging
scroll

signed *Qichang*, dated *yihai* (1635), the seventh
lunar month, with two seals of the artist, *dong qi*
chang, *xuan zai shi*

63.8 by 32 cm. 25 $\frac{1}{8}$ by 12 $\frac{5}{8}$ in.

PROVENANCE

Sotheby's New York, Fine Chinese Paintings,
June 3, 1985, lot 25

\$ 70,000-90,000

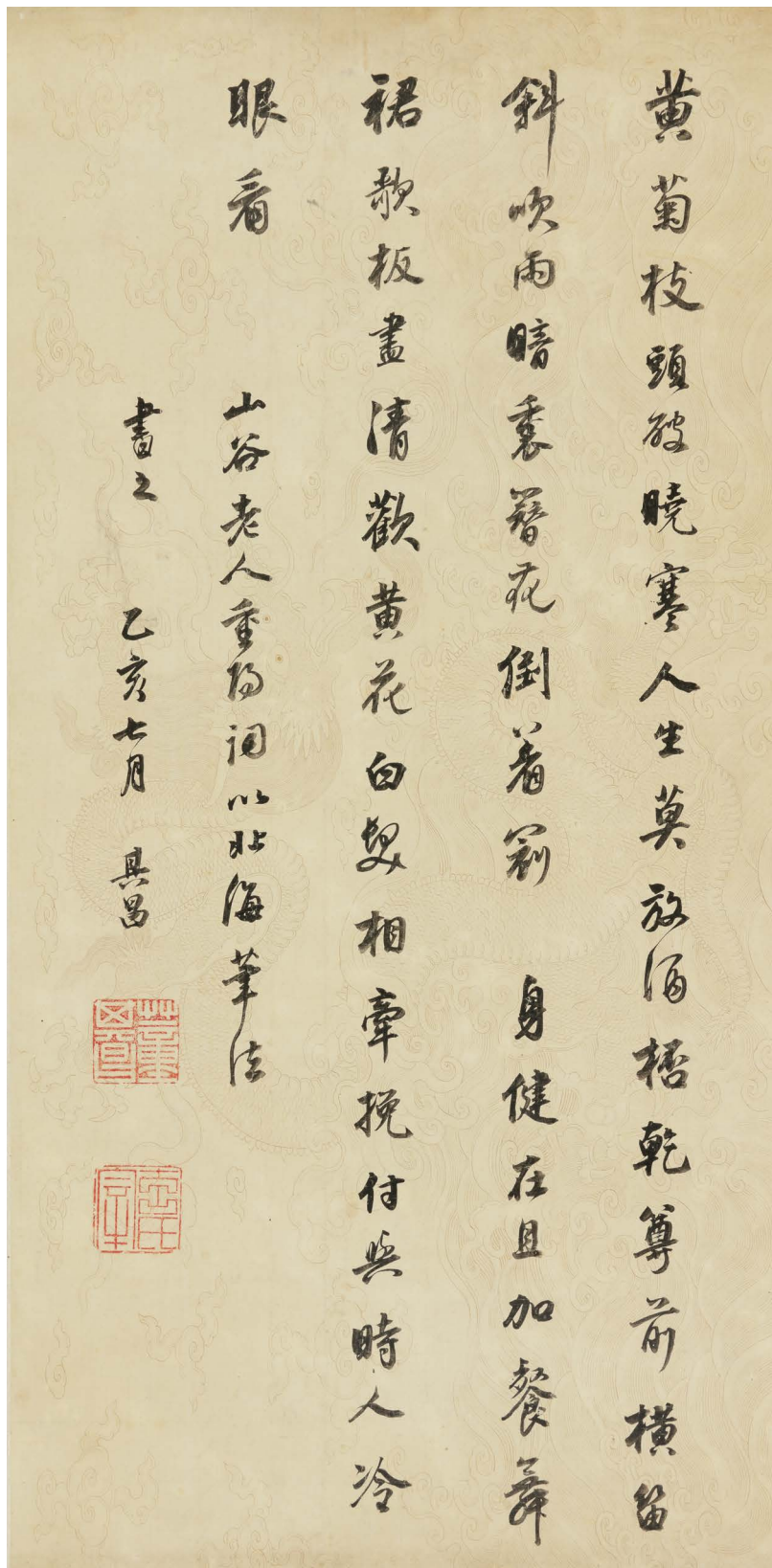
董其昌 行書黃庭堅《鷓鴣天·座
中有眉山隱客史應之和前韻即席
答之》 水墨描金龍紋箋 立軸

釋文：黃菊枝頭破曉寒，人生莫放酒
乾。尊前橫笛斜吹雨，暗裏簪花倒
著冠。身健在，且加餐。舞裙歌板
盡清歡。黃花白髮相牽挽，付與時
人冷眼看。

款識：山谷老人重陽詞，以北海筆
法書之。乙亥（1635）七月，其昌。
鈐印：董其昌、玄宰氏

來源：

紐約蘇富比，中國畫畫，1985年6月3日，
拍品編號25



ZOU ZHILIN (ACTIVE 1610-1651)

BANANA FLOWER IN AN EWER

ink and color on paper, hanging scroll

signed *Yiduo*, inscribed with a poem, and two seals of the artist, *lin, chen hu*, with two other collectors' seals, *liu an hua ming you yi cun, yan ting shou cang*

100.3 by 46.4 cm. 39½ by 18¼ in.

PROVENANCE

Christie's Hong Kong, Fine Classical Chinese Paintings, April 27, 1997, lot 136

\$ 30,000-50,000

鄒之麟 瓶中蕉露 設色紙本 立軸

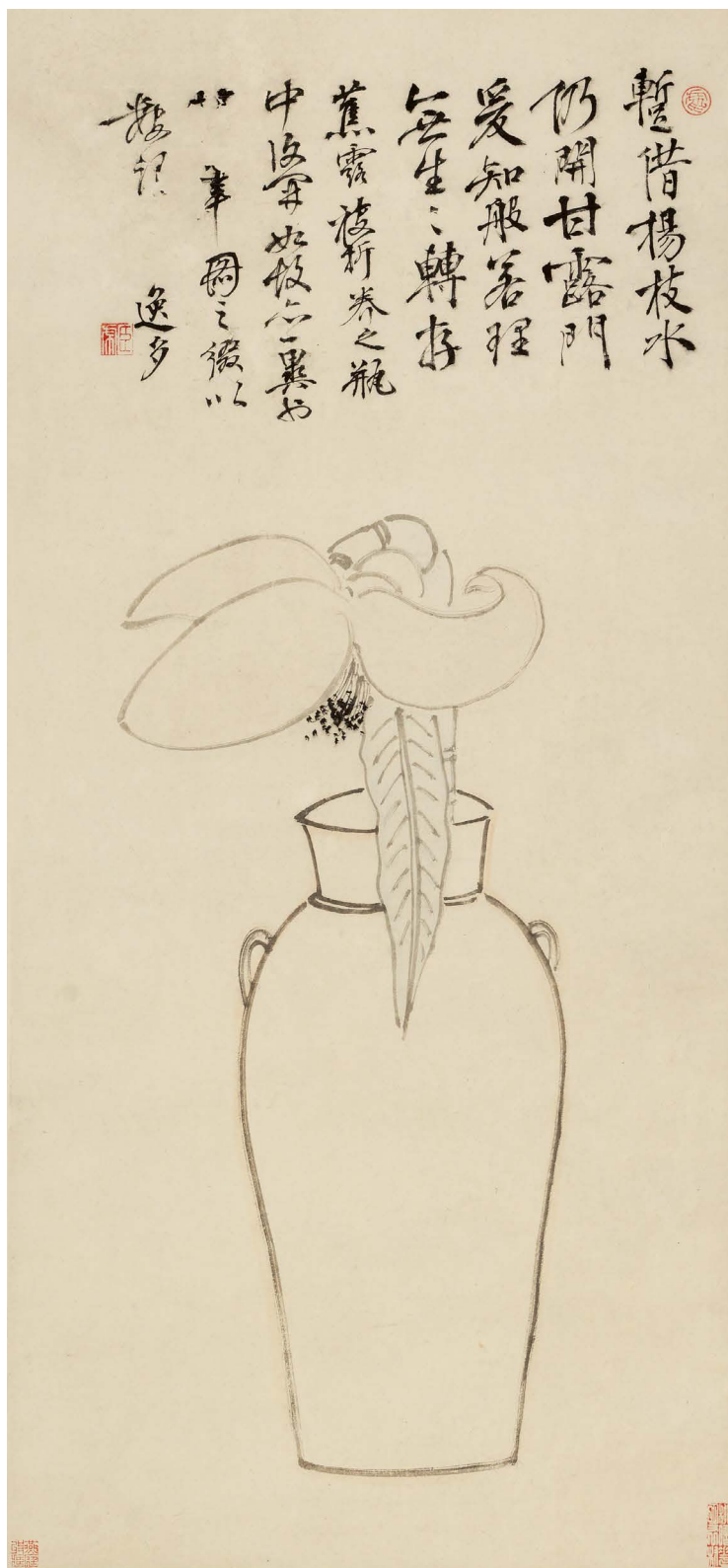
釋文：暫借楊枝水，仍開甘露門。爰知般若理，無生生轉存。

款識：蕉露被折，養之瓶中，復開如故，亦異也。□筆圖之，綴以數語。逸多。鈐印：麐、臣虎

鑒藏印：柳暗花明又一村、燕庭收藏

來源：

香港佳士得，中國古代書畫，1997年4月27日，拍品編號136



ZOU ZHILIN (ACTIVE 1610-1651)**LANDSCAPE**

ink on paper, hanging scroll

signed *Yilao*, with one seal of the artist, *zou zhi lin yin*With one collector's seal of Wu Ming (1902-?), *yi cui ge*, and two other collectors' seals, *tong you qian zhen cang yin*, *shuai ru jia you yuan dan gong yi yi zi shi zhou zai ci cang feng jian shang zhi zhang*60 by 30.8 cm. 23⁵/₈ by 12¹/₈ in.**EXHIBITED***Shadows of Mt. Huang: Chinese Painting and Printing of the Anhui School*, University Art Museum, Berkeley, January 21-March 22, 1981**LITERATURE**James Cahill (Ed.), *Shadows of Mt. Huang: Chinese Painting and Printing of the Anhui School*, University Art Museum, Berkeley, 1981, p.100, pl. 37**PROVENANCE**Eskenazi Ltd.
Sotheby's New York, Fine Chinese Painting, April 22, 1976, lot 55

\$ 50,000-70,000

鄒之麟 山水 水墨紙本 立軸

款識：偶於東禪院海棠花次見宋箋一帚，喜而畫此。逸老。鈐印：鄒之麟印

鑒藏印：（吳鳴）挹翠閣
童幼千珍藏印、率入嘉猷元禪公裔一字式
周再字滄峯鑒賞之章**展覽：**

黃山之影：新安畫派的國畫與版畫，加州大學伯克利分校藝術館，1981年1月21日—3月22日

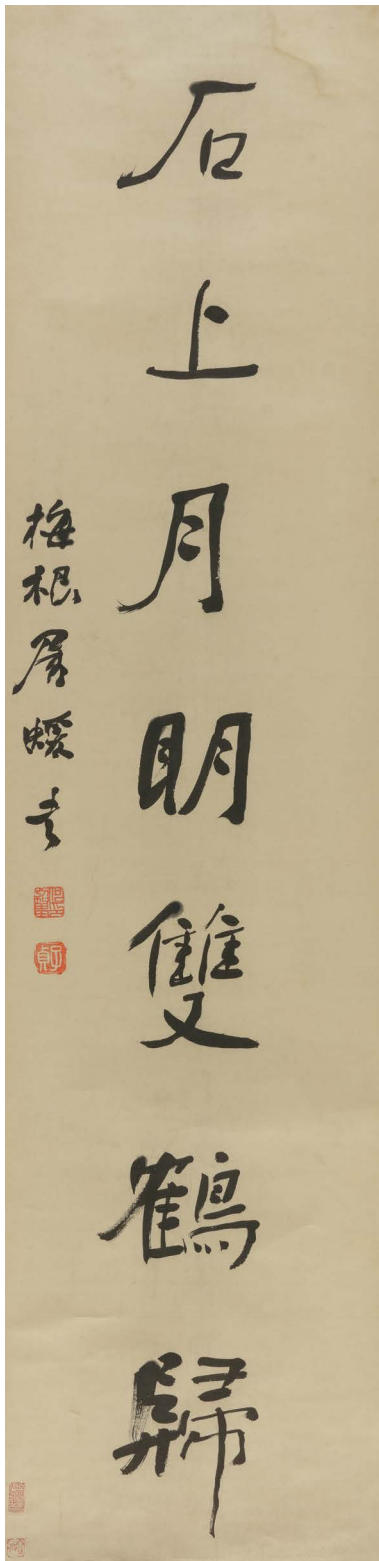
出版：

高居翰（編），黃山之影：新安畫派的國畫與版畫，加州大學伯克利分校藝術館，1981年，第100頁，圖版37

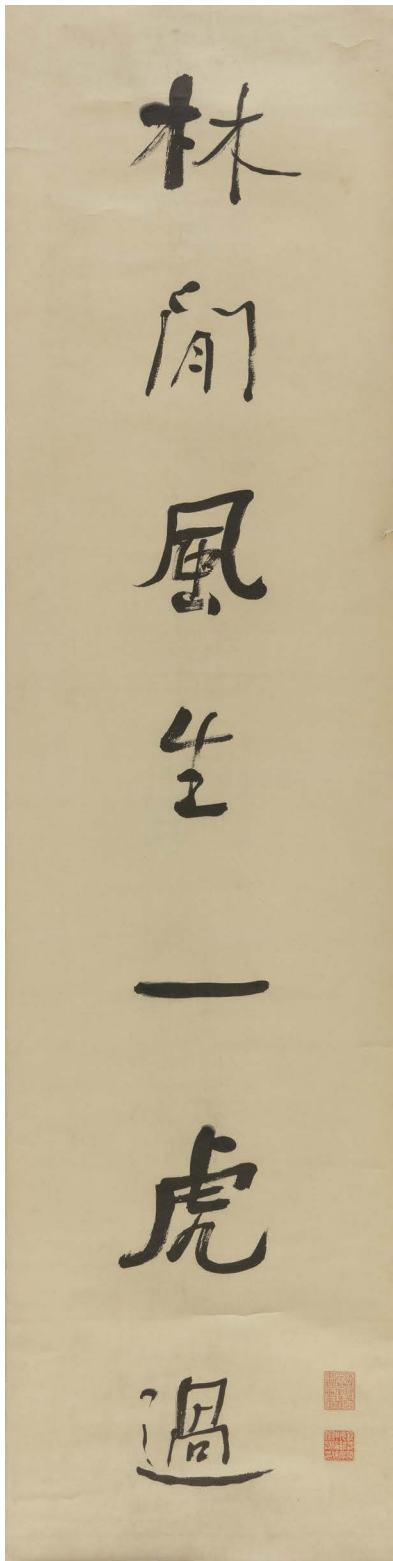
來源：埃斯卡納齊公司。
紐約蘇富比，中國書畫，1976年4月22日，拍品編號55

注：本件作品繪於宋朝「金粟山藏經紙」上。





1026



1026

HE SHAOJI 1799-1873

CALLIGRAPHY IN RUNNING SCRIPT

ink on paper, a pair of hanging scrolls

signed Yuan, with a dedication to Luo Ruhuai (1804-1880), and two seals of the artist, *he shao ji, zi zhen*

Titleslip by Wu Guanhai (1895-1979), dated *xinwei* (1931), with one seal, *wu*

With two collector's seals of, possibly, Rong Geng (1894-1983), *xi ling cun ren, rong zhai*, and two other collectors' seals, *zhang shi gui yun shan fang jian cang shu hua zhang, zhang sha zhang yuan zi zi zhong lun hao pei ruo yin*

each 129.5 by 33 cm. 51 by 13 in. (2)

PROVENANCE

Sotheby's New York, Fine Chinese Paintings, June 3, 1985, lot 93

\$ 8,000-12,000

何紹基 行書七言聯 水墨紙本 一對立軸

釋文：林間風生一虎過，石上月明雙鶴歸。

款識：梅根屬，媛書。鈐印：何紹基、子貞

鑒藏印：（或為容庚）細嶺邨人、容齋張氏歸雲山房鑒藏書畫章、長沙張元紱字仲綸號佩若印

題簽：何媛叟行書七言對，上、下。梅根乃羅研蓀，為媛叟詩友，見《東洲草堂集》中。辛未（1931）年得于宣南。曼公題。鈐印：吳

來源：

紐約蘇富比，中國書畫，1985年6月3日，拍品編號93

注：吳觀海（1895-1979），字曼公，江蘇武進人。民國時曾任故宮博物院顧問，古物管編纂課主任，四九年後任上海文物保管委員會特約編纂。

ZHANG DAQIAN (CHANG DAI-CHIEH) 1899-1983

CALLIGRAPHY COUPLET IN RUNNING SCRIPT

ink on paper, a pair of mounted for framing

signed *Daqian Zhang Yuan*, dated *wushen* (1968), the second lunar month, with a dedication to Mr. Tien-Shan Wang (1917-2007), with four seals of the artist, *wu ting hu, da feng tang, zhang yuan zhi yin, da qian ju shi*

each 180.3 by 43.2 cm. 71 by 17 in. (2)

LITERATURE

Tien-Shan Wang, *Liu Mei Ji*, 2009, pp. 13, 305

\$ 80,000-120,000

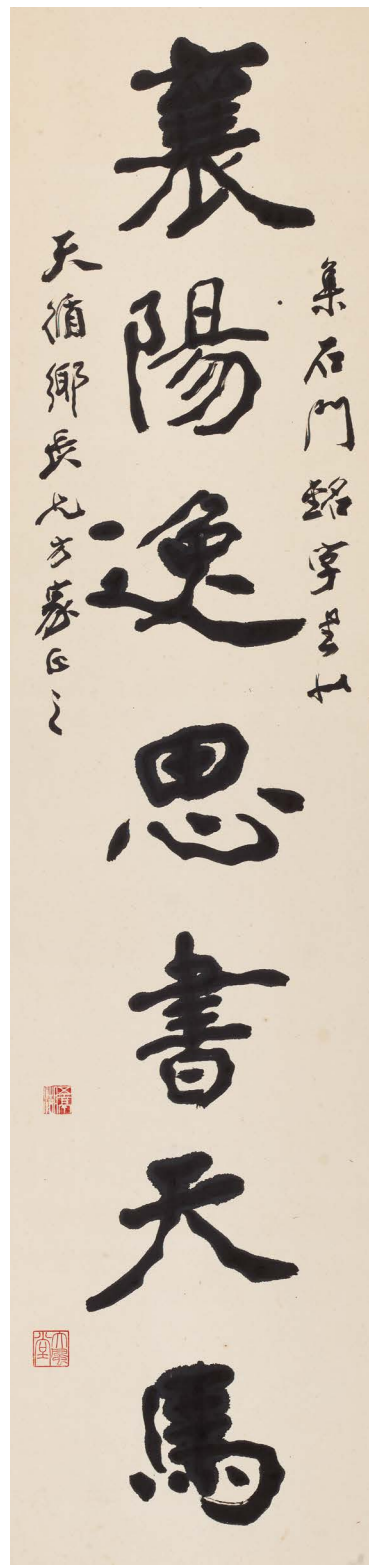
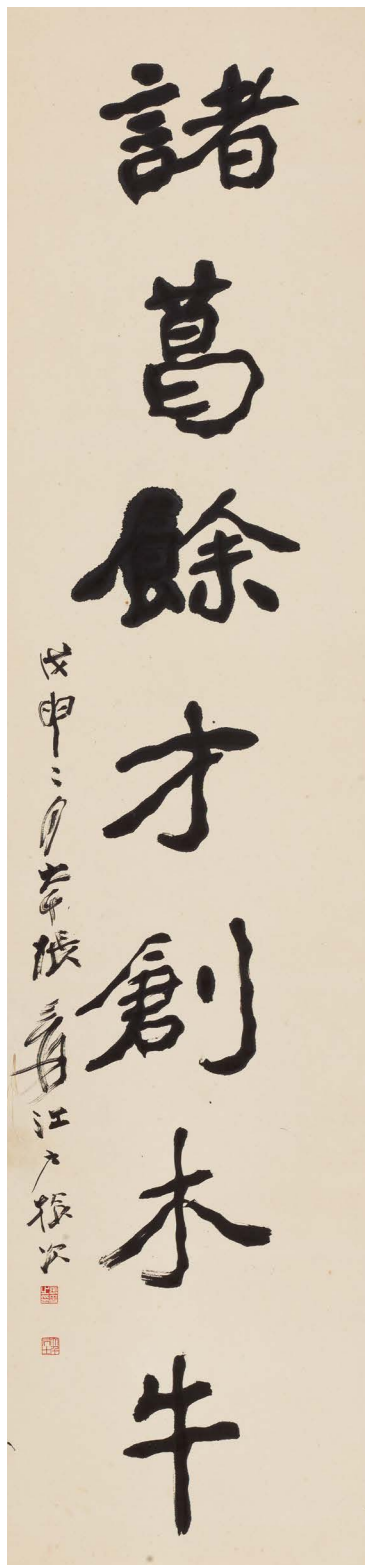
張大千 行書七言聯 水墨紙本 一對鏡片

釋文：襄陽逸思書天馬，諸葛餘才創木牛。

款識：集《石門銘》字書似天循鄉長兄方家正之，戊申（1968）二月，大千張爰江戶旅次。鈐印：五亭湖、大風堂、張爰之印、大千居士

出版：

王天循，《留美集》，2009年，第13、305頁



ZHU YUNMING 1460-1526**ODE TO THE GODDESS OF THE LUO RIVER IN CURSIVE SCRIPT**

ink on paper, handscroll

signed *Zhishan*, dated *yiyou* (1525), the eighth lunar month, with three seals of the artist, *tai yuan jun, xi zhe, wu jun zhu sheng*

32.7 by 849.2 cm. 12 $\frac{7}{8}$ by 334 in.

PROVENANCE

Sotheby's New York, Fine Chinese Paintings, June 1, 1992, lot 7

\$ 800,000-1,200,000

祝允明 草書《洛神賦》 水墨紙本 手卷

釋文：洛神賦。余從京城…（釋文略）…不能去。

款識：秋日雲莊酒次漫書，時乙酉（1525）八月望後也。枝山。鈐印：太原郡、晞哲、吳郡祝生

來源：

紐約蘇富比，中國書畫，1992年6月1日，拍品編號7

注：祝允明書法面目繁富，技法精湛，前人著述甚多，此處不再贅談。是卷上款給「雲莊」，即謝雍，字元和，號雲莊，世居長洲。祝、謝二家乃世交，謝雍的祖父謝會就已經是祝允明祖父祝灝的好友。祝允明早在三十二歲即被謝曷（謝雍之父）邀請為其父謝會的遺稿作序，同一年，祝允明又為謝會作《舉人謝君妾盧氏合祔誌銘》。之後又著有《謝氏世德記》，謝雍之子謝僖於嘉靖四年（1525）年去世，祝允明亦為其作墓志銘。謝雍應幼祝允明年齒不少，因為直到祝允明六十一歲才開始經常性的贈謝雍書法，如正德十五年（1520）為其書舊作《和陶淵明飲酒二十首》、正德十六年（1521）為其書陶淵明《閒情賦》，嘉靖四年為其書《離騷》，特別是嘉慶二年（1523）為謝雍寫的《千字文》，與此卷同樣是與雲莊「酒次」所書。除此之外，祝允明臨終前為緬懷平生良師摯友所作《感知詩》十九首中，亦特有一首《謝處士元和》專為謝雍所作。詩中不僅有「薰茗清談午夜陪」、「卻見千回似一回」句描繪其相伴相知之厚誼，亦有「紅芳落盡青青在，始信松筠是德材」表露祝允明對晚生的拳拳期愛之情。此卷草書曹植《洛神賦》，風格典型，氣度貫暢。遠觀章法天成，如龍蛇雲煙，純熟至極；近看點畫精妙，如切冰剖玉，沁人心脾。書法與文章內容相輔相成，執卷或誦讀或靜賞，皆不可多得之快事。

秋白之在石
之清出时乙
百月望及
六枝山

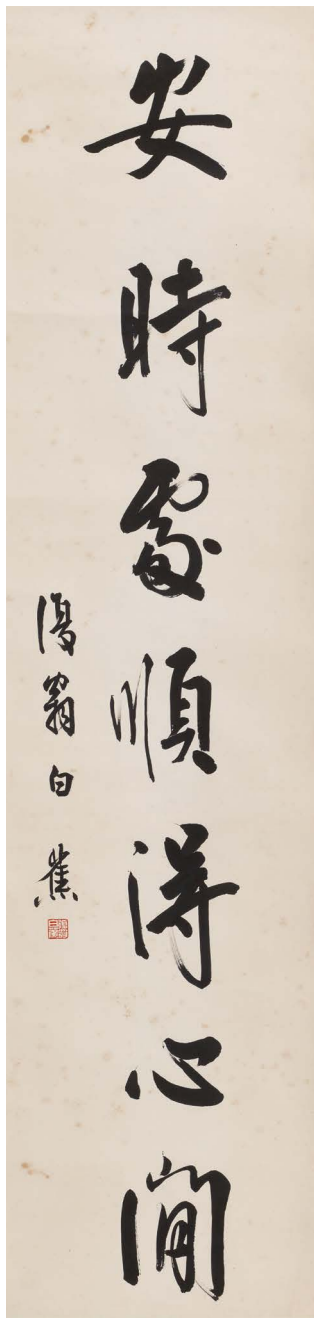


法非豈非序
黃初三年帝如
系河通海流以
古今之制必
亦自必如成
宋之書也主神
如子道也如
之宿余從東
域之南東生道
伊松城據極
道六凌景山既
必從平流也
必平乃既不平
義年殊細出之
田定之師未也
乎法也必也
瑞神能合也
及德也必也

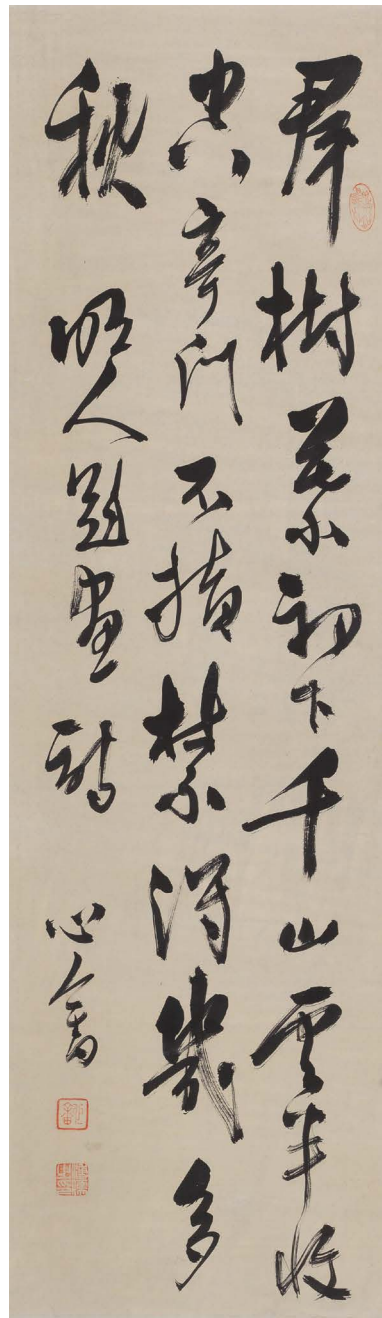
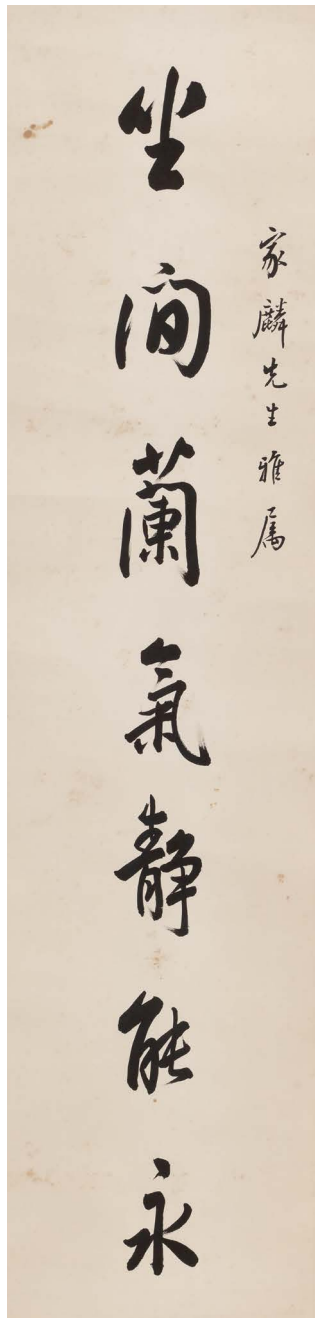
法非豈非序
安道之書也
美愛出於法
職道之修也
度商之制也
法非豈非序
美愛出於法
職道之修也
度商之制也
法非豈非序
美愛出於法
職道之修也
度商之制也

法非豈非序
實法之靈也
法非豈非序
實法之靈也
法非豈非序
實法之靈也
法非豈非序
實法之靈也

法非豈非序
實法之靈也
法非豈非序
實法之靈也
法非豈非序
實法之靈也
法非豈非序
實法之靈也



1029



1030

1029

BAI JIAO 1907-1969
CALLIGRAPHY COUPLET IN RUNNING
SCRIPT

ink on paper, a pair of hanging scrolls

signed *Fuweng Bai Jiao*, with a dedication, and
one seal of the artist, *fu weng bai jiao*

each 135.2 by 33.3 cm. 53¼ by 13⅞ in. (2)

\$ 20,000-40,000

白蕉 行書七言聯 設色紙本 一對
立軸

釋文：坐間蘭氣靜能永，安時處順得心閒。

款識：家麟先生雅屬，復翁白蕉。鈐印：
復翁白蕉

1030

PU RU 1896-1963

POEM IN CURSIVE SCRIPT

ink on paper, hanging scroll

signed *Xinyu*, with two seals of the artist, *xin yu*,
pu ru zhi yin

110.1 by 32 cm. 43 $\frac{3}{8}$ by 12 $\frac{5}{8}$ in.

\$ 12,000-18,000

溥儒 草書五絕一首 水墨紙本 立軸

釋文：群樹暮初下，千山雲半收。空亭門不掩，禁得幾多秋。

款識：明人題畫詩，心奮。鈐印：心奮、溥儒之印

1031

PU HUA 1832-1911

YUAN MEI'S POEM IN RUNNING SCRIPT

ink on paper, hanging scroll

signed *Zuoying Pu Hua*, dated *xinchou* (1901),
the first lunar month, with one seal of the artist,
pu zuo ying

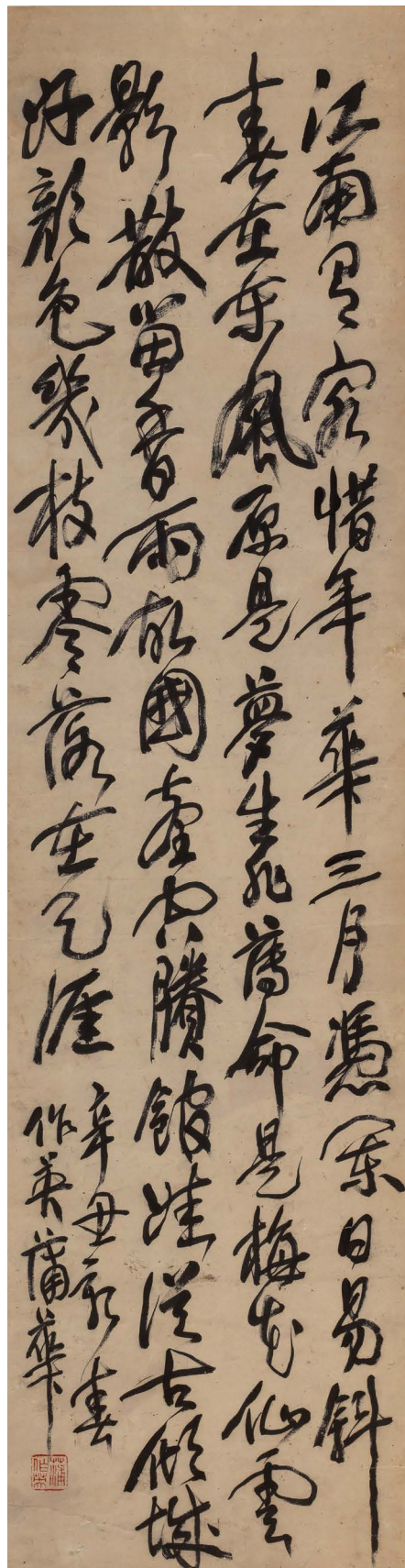
153 by 40.6 cm. 60 $\frac{1}{4}$ by 16 in.

\$ 10,000-20,000

蒲華 行書袁枚《落花詩》 水墨紙本 立軸

釋文：江南有客惜年華，三月憑闌日易斜。
春在東風原是夢，身非薄命不為花。
仙雲影散留香雨，故國臺空賸館娃。
從古傾城好顏色，幾枝零落在天涯。

款識：辛丑（1901）新春，作英蒲華。鈐印：蒲作英



1031



1032



1033

1032

WANG JIQIAN (C. C. WANG)

1907-2003

BAMBOO

ink on paper, framed

signed *Wang Jiqian*, dated *bingshen* (1956), the first lunar month, with two seals of the artist, *wang ji qian yin, huai yun lou*

47.3 by 136.2 cm. 18 $\frac{5}{8}$ by 53 $\frac{5}{8}$ in.

\$ 8,000-12,000

王季遷 溪風舞翠 水墨紙本 鏡框

款識：溪風舞翠。丙申（1956）元月，王季遷寫。鈐印：王季遷印、懷雲樓

1033

HUANG JUNBI 1898-1991

SCHOLAR VISITING FRIEND

ink and color on paper, framed

signed *Huang Junbi*, dated *bingshen* (1956), the first lunar month, with three seals of the artist, *huang jun bi yin, jun weng, bai yun tang*
47.5 by 129 cm. 18 $\frac{3}{4}$ by 50 $\frac{7}{8}$ in.

PROVENANCE

Sotheby's New York, Fine Chinese Paintings & Calligraphy, September 17, 2015, lot 668

\$ 8,000-12,000

黃君璧 攜琴訪友 設色紙本 鏡框

款識：丙申（1956）元月，畫於白雲堂，黃君璧。鈐印：黃君璧印、君翁、白雲堂

來源：紐約蘇富比，中國書畫，2015年9月17日，拍品編號668

1034

PU RU 1896-1963

SCHOLAR RESTING IN A GARDEN

ink and color on paper, hanging scroll

signed *Pu Ru*, inscribed with a poem, with four seals of the artist, *sheng xin zhai, jiu wang sun, pu ru, jiang tian shui mo qiu guang wan*

129.2 by 65.4 cm. 50 $\frac{7}{8}$ by 25 $\frac{3}{4}$ in.

PROVENANCE

Sotheby's London, Important Chinese Art, May 11, 2016, lot 312

\$ 50,000-70,000

溥儒 秋齋讀書 設色紙本 立軸

釋文：雲外秋風合，溪邊落葉分。草堂有高士，彝鼎供周文。

款識：心畬。鈐印：省心齋、舊王孫、溥儒、江天水墨秋光晚

來源：

倫敦蘇富比，中國藝術，2016年5月11日，拍品編號312



1034

PROPERTY FROM AN IMPORTANT ASIAN AMERICAN COLLECTION

LOTS 1035-1043

重要美國亞裔收藏 拍品編號1035-1043

Sotheby's is delighted to present the following selection of paintings from an Important Asian American Collection. This intimate group of paintings was assembled diligently by the owner in Hong Kong and Taiwan during the second half of the 20th Century and later brought to the United States. Each work evidences a strong visual purpose, and reveals the collector's deep appreciation for modern and contemporary artistic styles.

Exceptional pieces of jewelry from the same collection will be featured in our New York Fine Jewels sale on 25 September 2019 and Geneva *Magnificent Jewels and Noble Jewels* in November 2019.

本輯藏品來自重要美國亞裔收藏，此組書畫於上世紀後半葉在香港、台灣蒐集而成，之後帶來美國，一直密未示人。通過此批藏品我們可以管窺藏家不凡的藝術鑒賞能力及對中國書畫淵博的知識。

來自同一收藏的珍罕珠寶將分別在9月25日紐約珠寶拍賣和11月日內瓦瑰麗珠寶及貴族首飾拍賣呈現。

1035

ZHANG DAQIAN (CHANG DAI-CHIEN) 1899-1983

ODE TO RED CLIFF AFTER KUNCAN

ink and color on silk, framed

(1) with two seals of the artist, *zhang yuan, shu ke*

(2) signed *Yuan*, inscribed with a poem, with two seals of the artist, *ding wei, da qian wei yin da nian*

With two other seals of the artist, *ji hai ji si wu yin xin you, da qian hao fa*

56.5 by 93.3 cm. 22¼ by 36¾ in.

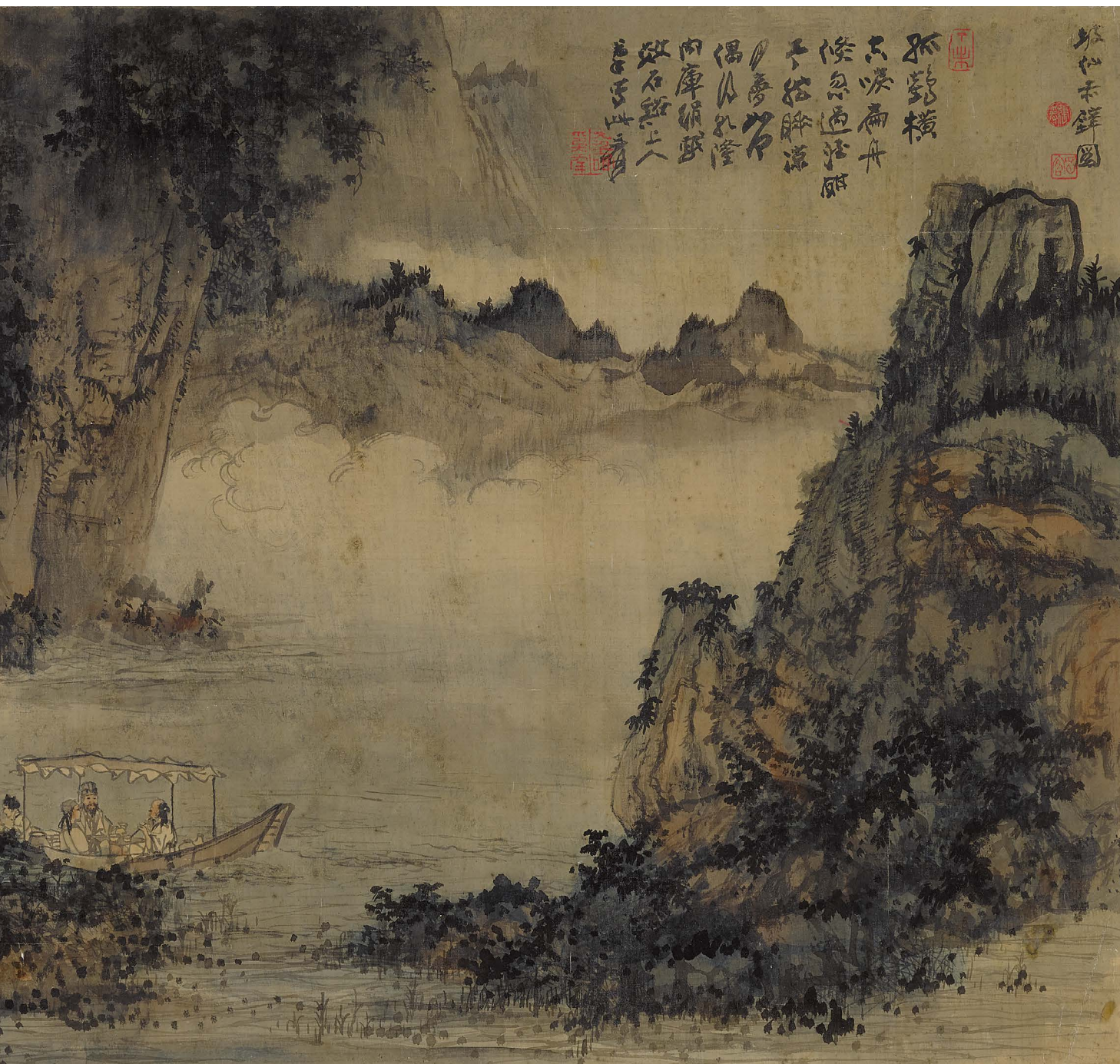
\$ 280,000-380,000

張大千 坡仙赤壁圖 設色絹本 鏡框

(一) 款識：坡仙赤壁圖。鈐印：張爰、蜀客
(二) 款識：孤鶴橫空唳，扁舟倏忽過。酒酣予然睡，涼月夢如何。偶得乾隆內庫絹，戲效石谿上人筆寫此，爰。鈐印：丁未、大千唯印大年

鈐印：己亥己巳戊寅辛酉、大千豪髮





松林古鏡圖

孤鶴橫

只嘆扁舟

倏忽過清湖

千松聯涼

月夢竹

偶以乳崖

向庫猶感

效石經上人

畫此



1036

1036

FENG CHAORAN 1882-1954

LANDSCAPE AFTER DONG BANGDA

ink and color on paper, framed

signed *Baihexi yuzhe Feng Chaoran*, dated *jisi* (1929), the first lunar month, with one seal of the artist, *feng chao ran*

105.1 by 52.7 cm. 41³/₈ by 20³/₄ in.

\$ 30,000-50,000

馮超然 仿董邦達山水 設色紙本 鏡框

款識：仿董東山筆意。己巳（1929）正月，白鶴溪漁者馮超然。鈐印：馮超然

1037

GU LINSHI 1865-1930

THE JOY OF FISHING AMONG LAKE
AND MOUNTAINS

ink and color on paper, framed

signed *Gu Linshi*, dated *jiayin* (1914), inscribed
with a poem, and one seal of the artist, *gu he yi*

114.3 by 54 cm. 45 by 21¼ in.

\$ 20,000-40,000

顧麟士 湖山漁樂 設色紙本 鏡框

款識：漁隱生涯付一竿，水鄉雲霧海天寬。
羨君生受煙波宅，紅笠青簑釣碧湍。
甲寅（1914）東坡誕日雨窓，顧麟士。鈐
印：顧鶴逸



1037



1038

1038

WU CHANGSHUO 1844-1927

MAGNOLIA AND HAITANG FLOWERS

ink and color on paper, framed

signed *Wu Changshuo*, dated *jiayin* (1914), the
eleventh lunar month, with two seals of the
artist, *chang shuo, gu zhang*

113.7 by 57.1 cm. 44¾ by 22½ in.

\$ 100,000-150,000

吳昌碩 玉堂富貴 設色紙本 鏡框

款識：玉堂富貴。木筆白與蜀后，鼠姑艷
若玉環。合而寫之，古色斑斕。鈐印：
甲寅（1914）冬仲，吳昌碩。鈐印：昌
碩、古鄣

1039

ZHANG DAQIAN (CHANG DAI-
CHIEN) 1899-1983

RECLUSE IN LOFTY MOUNTAIN

ink and color on paper, framed

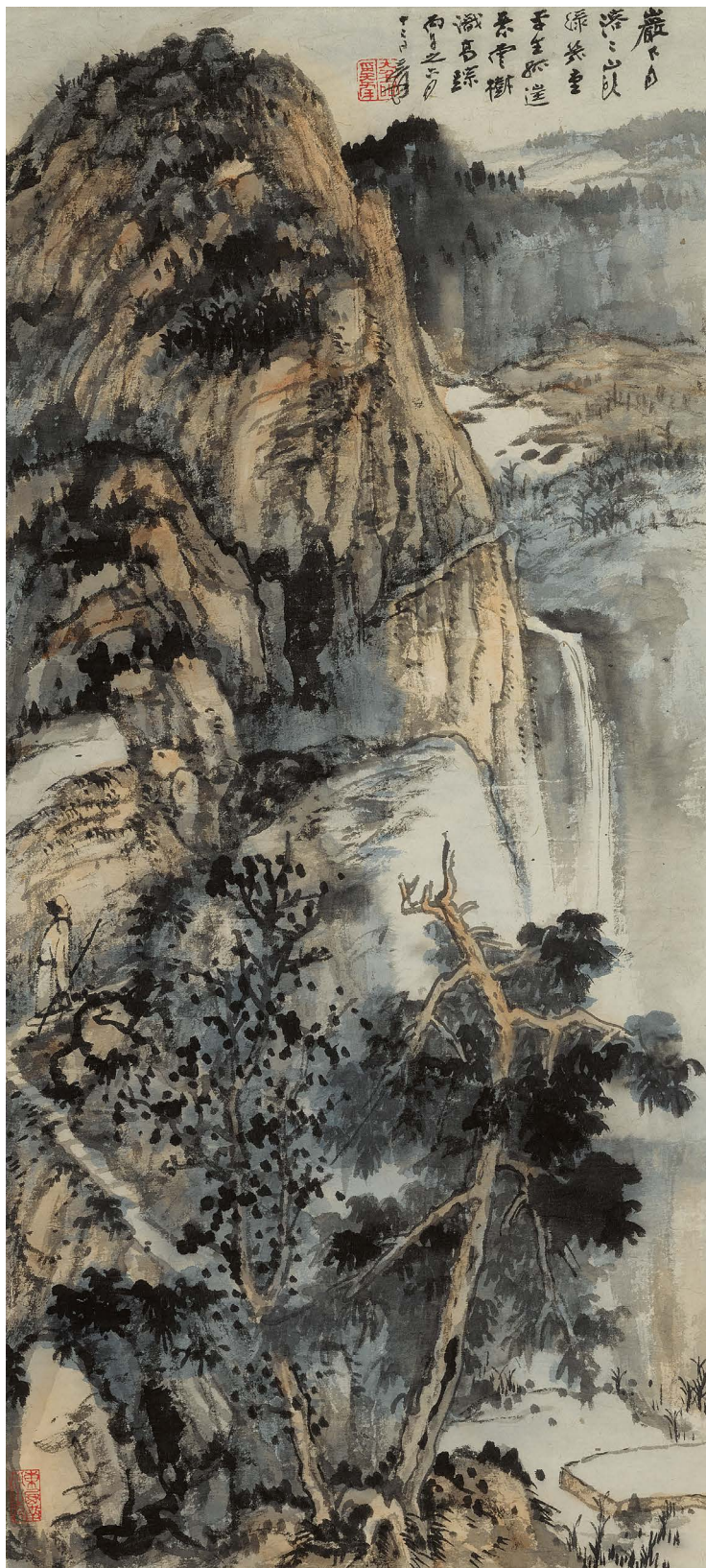
signed *Yuan*, dated *bingwu*, the twelfth day of
the sixth lunar month (July 29, 1966), inscribed
with a poem, with one seal of the artist, *da qian*
wei yin da nian

93.3 by 42.5 cm. 36¾ by 16¾ in.

\$ 150,000-250,000

張大千 高山雲隱 設色紙本 鏡框

款識：巖下自溶溶，山頭綠幾重。平生孤
迂意，雲樹識高踪。丙午（1966）之六月
十二日，爰。鈐印：大千唯印大年



1039

PU RU 1896-1963

HORSE AND TRAINER

ink and color on paper, framed

signed *Pu Ru*, inscribed with three poems, with three seals of the artist, *yi hu zhi zhong, jiu wang sun, pu ru*

60.3 by 31.8 cm. 23¾ by 12½ in.

\$ 20,000-40,000

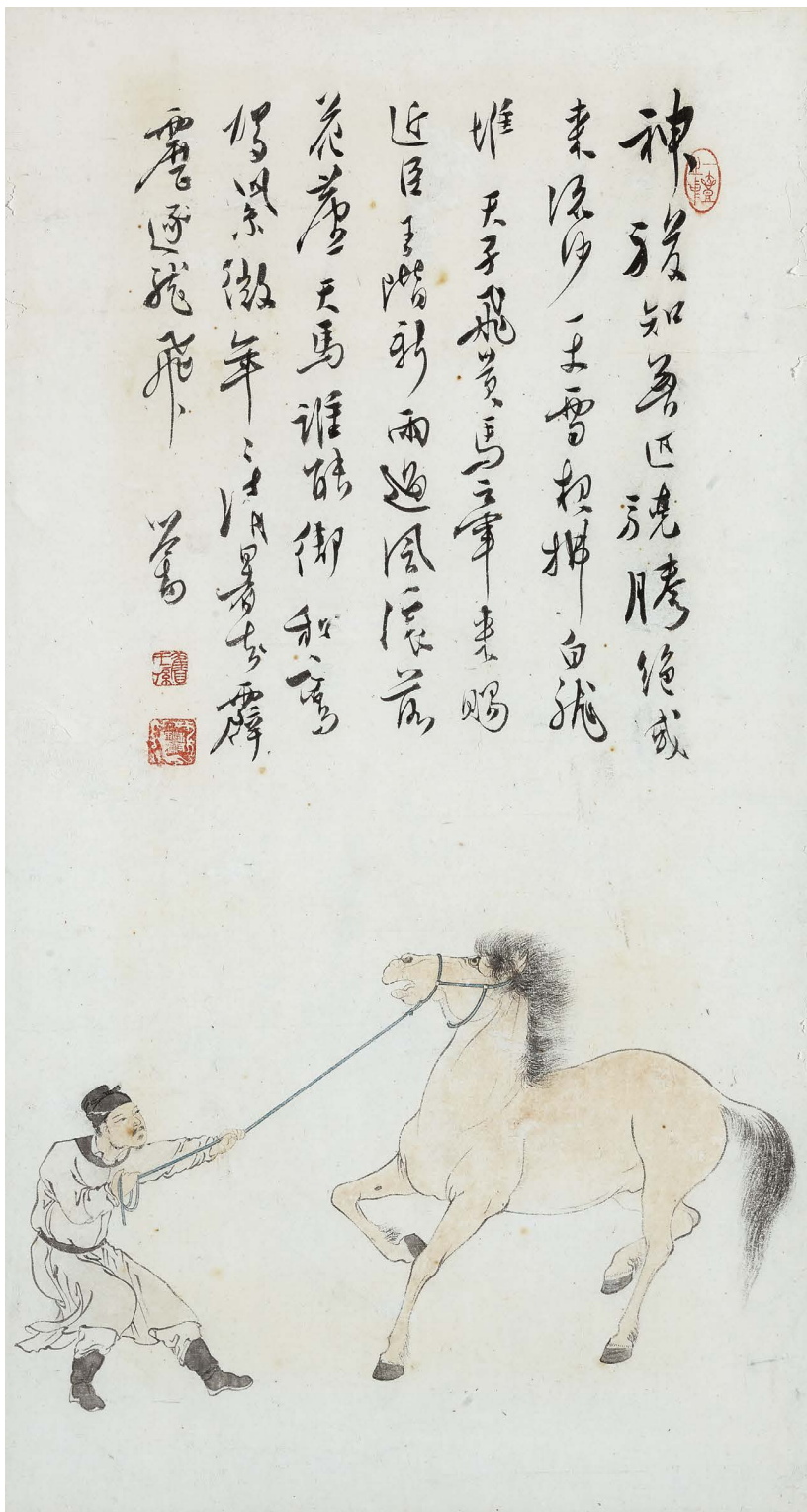
溥儒 調良圖 設色紙本 鏡框

釋文：神駿知無匹，驍騰絕域來。流沙一丈雪，夜拂白龍堆。

天子飛黃馬，牽來賜近臣。玉階新雨過，風滾落花塵。

天馬誰能馭，和鸞駕紫微。年年清暑去，霹靂逐龍飛。

款識：心畬。鈐印：一壺之中、舊王孫、溥儒



1041

**ZHANG DAQIAN (CHANG DAI-
CHIEN) 1899-1983**

SELF-PORTRAIT UNDER PINE

ink and color on paper, framed

signed *Daqian di Zhang Yuan*, with a dedication,
and two seals of the artist, *zhang yuan chang
shou, zhang da qian chang nian da ji you ri li*

67.3 by 34.3 cm. 26½ by 13½ in.

\$ 80,000-120,000

張大千 松下小像 設色紙本 鏡框

款識：如堂吾兄法教，大千弟張爰。鈐
印：張爰長壽、張大千長年大吉又日利



1041



1042

1042

**HUANG YUE 1750-1841, NI TIAN
1855-1919**

**SCHOLAR ON A BOAT, READING
UNDERNEATH AUTUMN TREE**

ink and color on paper, a pair of framed fan
leaves

(1) signed *Zuotian Huang Yue*, dated *renxu*, one
day before the Qingming festival (April 4, 1802),
with a dedication, and one seal of the artist,
huang yue si yin

(2) signed *Hanshang Mogeng Ni Tian*, dated
renchen (1892), summer, the sixth lunar month,
with a dedication and one seal of the artist, *mo
geng*

19 by 52.7 cm. 7½ by 20¾ in.

18.1 by 50.8 cm. 7¼ by 20 in.

\$ 8,000-12,000

黃鉞、倪田 秋江孤舟、秋樹讀書
設色紙本 一對扇框

(黃鉞) 壬戌 (1802) 清明前一日，寫
奉寶生大人誨正，左田黃鉞。鈐印：黃
鉞私印

(倪田) 秋樹讀書。壬辰 (1892) 夏六
月，奉振甫仁兄大人雅屬，即請正之。邨
上墨畊倪田，時客申江。鈐印：墨畊



1043

1043

GU LUO (1763-CIRCA 1837), DAI YI (QING DYNASTY), JIANG ZHOU (QING DYNASTY), HUSOU DUAN (QING DYNASTY)
FLOWERS AND BIRDS

ink and color on paper, a set of four framed fan leaves

(1) signed *Gu Luo*, inscribed with a poem, with a dedication and one seal of the artist, *xi mei hua yin*

(2) signed *Yuling Dai Yiming*, dated *dinghai*, the fourth lunar month, with a dedication, and two seals of the artist, *yi ming, dai yi*

(3) signed *Jiang Zhou*, dated *wushen*, summer, inscribed with a poem, with a dedication, and one seal of the artist, *jiang zhou*

(4) signed *Husou Duan*, dated *wuchen*, the ninth day of the ninth lunar month, inscribed with a poem, with a dedication, and one seal of the artist, *zi fang*

Various sizes.

\$ 12,000-18,000

顧洛、戴彝、蔣洲、湖叟端 花鳥
 設色紙本 扇框四件

(顧洛)款識：玲瓏瓣疊展紅稠，自足娛人玩賞留。壁色須知原不一，半空霞錦護瓊樓。錄《百花詠》句，為壽芝老人寫此，顧洛。鈐印：西樵畫印

(戴彝)款識：維仲二兄大人雅鑒，丁亥首夏，庚嶺戴一鳴，作於二十四研齋。鈐印：弑鳴、戴彝

(蔣洲)款識：帶雨胭脂一樹花，白頭啼到野人家。早知香色難留住，餐尋紅桃勝碧霞。戊申夏為燦林親台大人誨政，蔣洲。鈐印：蔣洲

(湖叟端)款識：秋曉立庭陰，秋露凝紅裏。遙看群玉峯，秋菊殊堪候。南田翁作便面《錦石秋容圖》得趙承旨風韻，天趣冷然，藝林妙品也。丙辰重九為重華三兄屬，即倣此以應并題，湖叟端。鈐印：子方



1044



1045

1044

PU HUA 1832-1911

LANDSCAPE AFTER GAO KEGONG

ink on paper, hanging scroll

signed *Xiushui Pu Hua*, with one seal of the artist, *pu zuo ying*

154.6 by 40 cm. 60 $\frac{7}{8}$ by 15 $\frac{3}{4}$ in.

\$ 9,000-15,000

蒲華 仿高克恭山水 水墨紙本 立軸

款識：高尚書《夏山煙雨圖》學大米，而能脫去畦迕，真稱元畫逸品。余今放筆效之，自喜畧得其神。秀水蒲華。鈐印：蒲作英

1045

WU CHANGSHUO 1844-1927

BUDDHA'S HAND

ink and color on paper, hanging scroll

signed *Wu Changshuo*, dated *jiwei* (1919), autumn, at the age of seventy-six *sui*, with three seals of the artist, *wu jun chang shou*, *fou dao ren*, *po he ting chang*

107.3 by 30.2 cm. 42 $\frac{1}{4}$ by 11 $\frac{7}{8}$ in.

PROVENANCE

Sotheby's New York, Fine Chinese Paintings & Calligraphy, March 20, 2014, lot 712

\$ 25,000-35,000

吳昌碩 佛手 設色紙本 立軸

釋文：參一指禪，得平安意。我佛拈花，是一是二。

款識：己未（1919）新秋，吳昌碩年七十六。鈐印：吳俊長壽、缶道人、破荷亭長

來源：

紐約蘇富比，中國書畫，2014年3月20日，拍品編號712

1046

DONG SHOUPING 1904-1997

BAMBOO

ink on paper, hanging scroll

signed *Dong Shouping*, dated *dingmao* (1987),
the eighth lunar month, with three seals of the
artist, *shi zao hua, dong shou ping, shou ping*
shu hua

136.5 by 68.5 cm. 53¾ by 27 in.

\$ 15,000-25,000

董壽平 墨竹 水墨紙本 立軸

款識：丁卯（1987）仲秋之月，八十三
翁董壽平。鈐印：師皓化、董壽平、壽
平書畫



1046

PROPERTY FROM THE ESTATE
OF EMMA O. DONG M. D. LOTS 1047-1048

曾春愛醫生遺珍 拍品編號1047-1048



1047



Dr. Emma O. Chong with Zhang Daqian in Taipei
曾春愛醫生與張大千在台北

Dr. Emma O. Dong (1913-2015) was a renowned ophthalmologist in California and the first Chinese woman to be certified by the American Board of Ophthalmology in 1950. Around 1970, Zhang Daqian's eyesight was failing due to cataracts in his eyes so he had cataract surgery of the right eye in New York. Unfortunately, due to complications caused by his diabetic condition, the surgery did not improve his vision. After the artist moved to California, he was referred to Dr. Dong to see if the vision in his left eye could be improved. Under Dr. Dong's treatment, another cataract surgery was performed on the left eye and the result was excellent. His family and friends were overjoyed that the artist once again could do glorious art work with proper color and detail, which was crucial to Zhang Daqian's later splash color style. Dr. Dong and her husband Dr. Harry S. Chong (2012-2014) were often invited to Zhang Daqian's home in California, and later Moye Jingshe in Taiwan.

曾春愛醫生（1913-2015）是加州著名的眼科醫生，也是二戰期間於1950年第一位在美國拿到眼科醫師資格證書的華裔女性。1970年左右，大千先生剛在紐約接受了右眼白內障手術，但由於綜合糖尿病病症，手術效果並不理想。大千先生移居加州後，經人介紹認識了曾春愛醫生。曾醫生為其仔細檢查，後對左眼進行了白內障手術，效果非常理想。可以說沒有曾醫生精湛的醫術，大千先生之後的潑彩創新必然會受到影響。曾醫生及先生張肇華醫生（1912-2014）是以常為大千先生加州寓所的座上客，伉儷二人後亦被大千先生邀請至其台北摩耶精舍。

1047

ZHANG DAQIAN (ZHANG DAI-
CHIEN) 1899-1983

SPARROW ON TREE BRANCH

ink and color on cardboard

signed Zhang Daqian Yuan, with a dedication to Harry S. Chong (1912-2014) and Emma O. Dong, with one seal of the artist, *zhang da qian chang nian da ji you ri li*

26.9 by 24 cm. 10 $\frac{5}{8}$ by 9 $\frac{1}{2}$ in.

\$ 7,000-9,000

張大千 紅葉小鳥 設色卡紙

款識：肇華仁兄、夫人慧正，蜀郡張大千
爰。鈐印：張大千長年大吉又日利

1048

ZHANG DAQIAN (CHANG DAI-
CHIEN) 1899-1983

LONELY SCHOLAR SAILING AMONG
LOFTY MOUNTAIN

ink and color on paper, framed

signed *Zhang Daqian Yuan*, dated the sixty-
second year of the Republic (1973), the first
lunar month, with a dedication to Emma O.
Dong, with two seals of the artist, *gui chou, da
qian wei yin da nian*

66 by 33 cm. 26 by 13 in.

\$ 100,000-200,000

張大千 輕舟崇山 設色紙本 鏡框

款識：六十二年（1973）元月，寫似春愛
大醫師清賞，蜀郡張大千爰。鈐印：癸
丑、大千唯印大年



1048



1049

1049

ZHANG DAQIAN (CHANG DAI-CHIEN) 1899-1983

LOTUS

ink and color on cardboard, unmounted

signed *Shuren Zhang Daqian Yuan*, dated *guimao* (1963), with one seal of the artist, *zhang yuan zhi yin xin*

36.2 by 43.8 cm. 14¼ by 17¼ in.

\$ 25,000-45,000

張大千 荷花 設色卡紙 未裱

款識：癸卯（1963）之秋，蜀人張大千爰。鈐印：張爰之印信



1050

1050

PROPERTY FROM THE ESTATE OF SUSAN S. DILLON

ZHANG DAQIAN (CHANG DAI-CHIEN) 1899-1983

PEONIES

ink and color on paper, framed

signed *Yuanweng*, dated *renzi*, one day after the Duanwu festival (June 16, 1972), with three seals of the artist, *da qian wei yin da nian*, *da qian shi jie*, *de xin ying shou*

66 by 67.3 cm. 26 by 26½ in.

\$ 15,000-25,000

蘇珊·S·狄龍遺珍

張大千 牡丹 設色紙本 鏡框

款識：爰翁。壬子（1972）端午後一日，環筆。鈐印：大千唯印大年、大千世界、得心應手

PROPERTY FROM THE COLLECTION OF LILIAN
HOLMES JENNESS

WU HUFAN 1894-1968

SNOWSCAPE OF THE GUAN MOUNTAIN

ink and color on paper, hanging scroll

signed *Wu Hufan*, dated *wuzi* (1948), the second lunar month, inscribed "after the painting method of Yan Wengui", with one seal of the artist, *wu hufan*

98.7 by 32.7 cm. 38 $\frac{7}{8}$ by 12 $\frac{7}{8}$ in.

Lilian Holmes Jenness (1889-1965) was born in Cambridge, Massachusetts. When she was a young woman she moved to China to serve as a Presbyterian missionary, and she spent much of her time in Shanghai. Lilian was close to the family of Pang Yipeng (1901-1998), who was a successful artist and illustrator in Shanghai. Lilian adopted one of Pang's sons when she had to leave China in 1949. This Wu Hufan scroll was very likely gifted to Lilian at the time, and it has remained in the family since then.

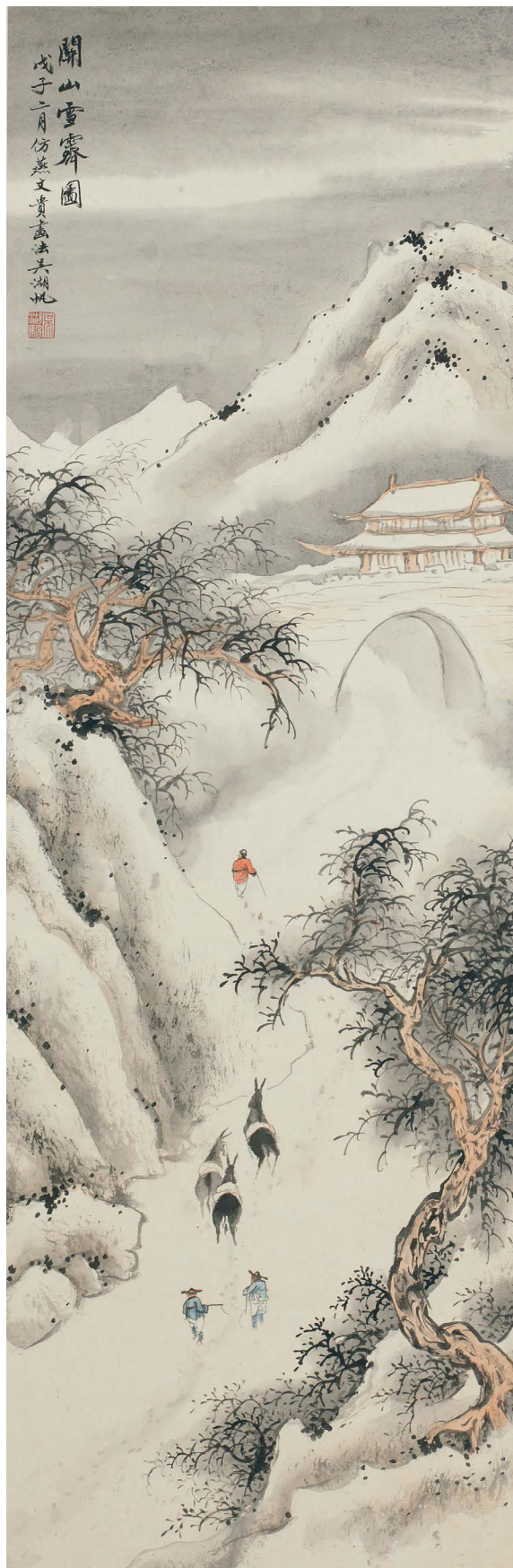
\$ 18,000-28,000

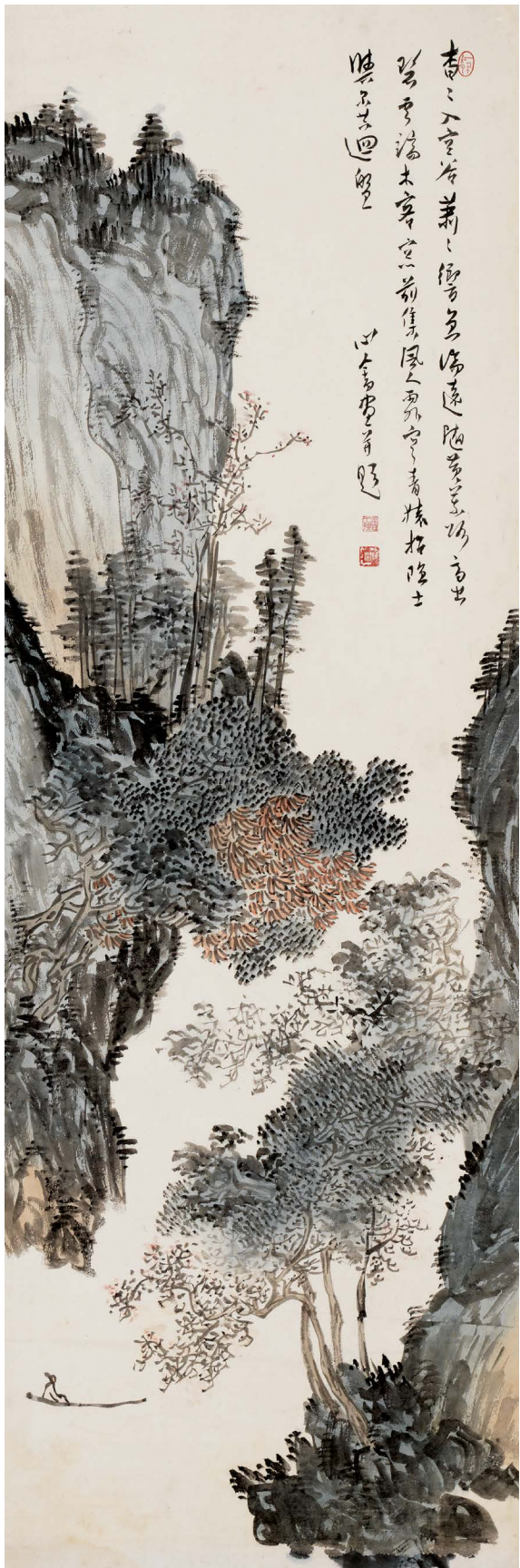
莉莉安·傑尼斯遺珍

吳湖帆 關山雪霽 設色紙本 立軸

款識：關山雪霽圖。戊子（1948）二月，仿燕文貴畫法，吳湖帆。鈐印：吳湖帆

注：莉莉安·傑尼斯（1889-1965）生於馬薩諸塞州劍橋鎮，她年輕時就作為長老會傳教士一員來到中國，大部分時間駐上海，後與當時海上著名廣告設計師龐亦鵬（1901-1998）相友善。莉莉安於1949年離開中國之際領養了龐亦鵬的一個兒子，想必此件吳湖帆作品亦是當年受贈之物。這件作品其後一直保存在莉莉安家人處。





1052

1052

THE TAO TING YEE AND TAO PAO VE MING
COLLECTION OF CHINESE PAINTINGS AND
CALLIGRAPHY

PU RU 1896-1963

**LONELY SCHOLAR ON A BOAT AMONG
LOFTY MOUNTAIN**

ink and color on paper, hanging scroll

signed *Xinyu*, inscribed with a poem, with three
seals of the artist, *yi duo hong yun, jiu wang sun,*
pu ru

144.5 by 48.3 cm. 56 7/8 by 19 in.

Please refer to the department's catalogue on
March 22, 2019 for an introduction to The Tao
Ting Yee and Tao Pao Ve Ming Collection of
Chinese Paintings and Calligraphy.

\$ 15,000-25,000

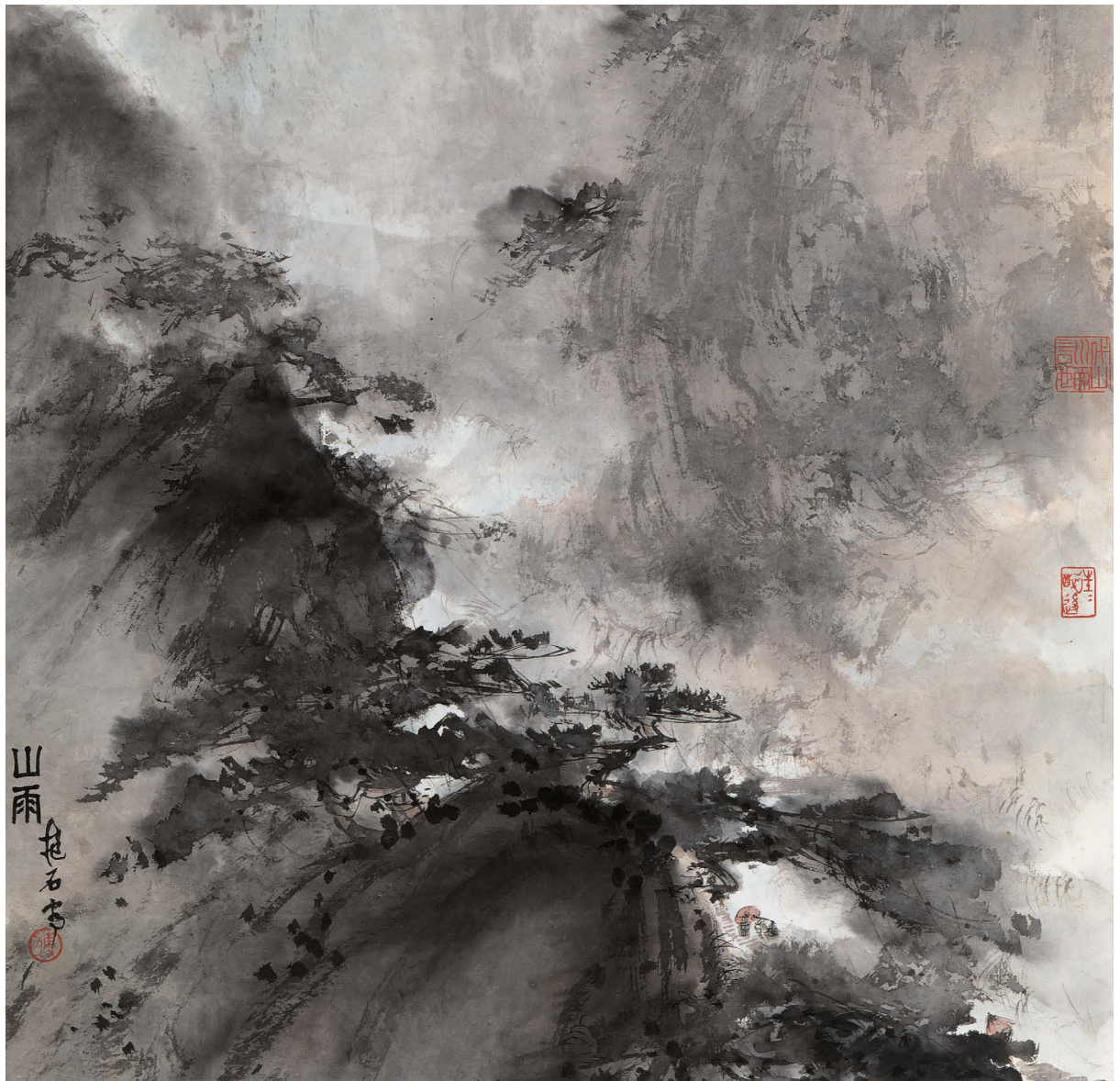
陶鼎彝陶包薇明伉儷珍藏中國書畫

溥儒 高山孤舟 設色紙本 立軸

釋文：杳杳入空谷，蕭蕭響急湍。遠隨黃
葉路，高出碧雲端。木客窓前集，風入雨
外寒。青猿招隱去，興尔芒迴盤。

款識：心畬畫并題。鈐印：一朵紅雲、舊
王孫、溥儒

注：陶鼎彝陶包薇明伉儷珍藏中國書畫介
紹請參見本部門2019年3月22日圖錄。



1053

1053

FU BAOSHI 1904-1965

MOUNTAIN RAIN

ink and color on paper, hanging scroll

signed *Fu Baoshi*, with three seals of the artist, *dai shan chuan er yan xin, wang wang zui hou, fu*
 Titleslip by Hou Beiren (B. 1917), signed *Hou Beiren*, dated 1959, with one seal, *han mo liu xiang*

57 by 58.7 cm. 22½ by 23 in.

PROVENANCE

Hou Beiren collection
 Sotheby's Hong Kong, Modern and Contemporary Chinese Paintings, November 11, 1982, lot 9

\$ 40,000-60,000

傅抱石 山雨 設色紙本 立軸

款識：山雨。傅抱石。鈐印：代山川而言心、往往醉後、傅

題簽：傅抱石精品，山雨。侯北人題於一九五九年。鈐印：翰墨留香

來源：

侯北人舊藏

香港蘇富比，中國近現代書畫，1982年11月11日，拍品編號9



1054

1054

DING YANYONG 1902-1978

EIGHT IMMORTALS

ink and color on paper, hanging scroll

signed Ding Yanyong, dated wuwu (1978),
inscribed with a poem, with two seals of the
artist, niu jun, niu jun

138.1 by 69.2 cm. 54 $\frac{3}{8}$ by 27 $\frac{1}{4}$ in.

PROVENANCE

Consignor bought from Asiatica Ltd. on
September 28, 1979

\$ 60,000-80,000

丁衍庸 八仙 設色紙本 立軸

釋文：倒騎驢子張果老，稚氣尚存藍采和。
道行高深呂洞賓，道貌岸然漢鍾離。
皇親國戚曹國舅，相貌古怪李鐵拐。
蕭聲入雲韓湘子，婷婷玉立仙姑何。

款識：戊午（1978年），丁衍庸寫。鈐
印：牛君、牛君

來源：

委託方於1979年9月28日購於Asiatica公司

1055

HUANG ZHOU 1925-1997

SIX DONKEYS

ink on paper, mounted for framing

signed Huang Zhou, dated 1979, Spring Festival,
with two seals of the artist, liang shi, huang zhou

58.3 by 94 cm. 22 $\frac{7}{8}$ by 37 in.

\$ 60,000-100,000

黃胄 六驢圖 水墨紙本 鏡片

款識：六驢圖。一九七九年春節落墨，自
新疆旅行返京，完工于三里河木齋。黃
胄。鈐印：梁氏、黃胄



1055

1056

PU RU 1896-1963

MYSTERIOUS FIGURE

ink and color on silk, unmounted

signed Xinyu, with one seal of the artist, pu ru

28 x 20.3 cm. 11 x 8 in.

\$ 12,000-18,000

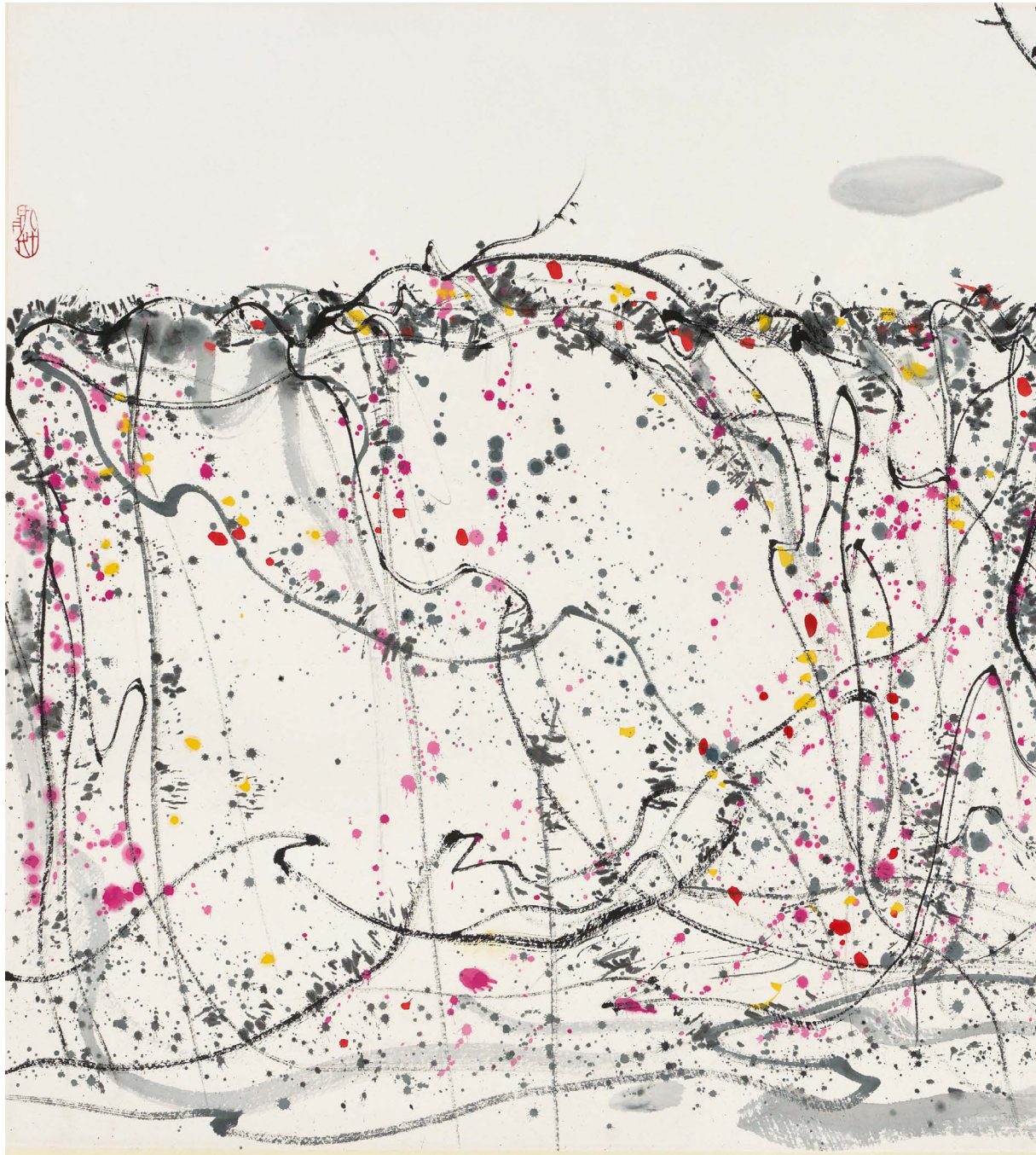
溥儒 牛相公 設色絹本 未裱

釋文：牛相公，衣冠儒雅學斯文，日日人間醉意醺，誰識此公真面目，遂使欺世氣如雲。

款識：心畬。鈐印：溥儒



1056



1057

WU GUANZHONG 1919-2010
VINES CRAWLING ON A WHITE WALL

ink and color on paper, mounted for framing
signed *Wu Guanzhong*, dated 1991, with two
seals of the artist, *wu guan zhong yin, jiu shi*
nian dai

69.2 by 137.4 cm. 27¹/₄ by 54¹/₈ in.

\$ 500,000-700,000

吳冠中 筋骨餘非關顏色 設色紙
本 鏡片

釋文：老來餘筋骨，非關顏色。

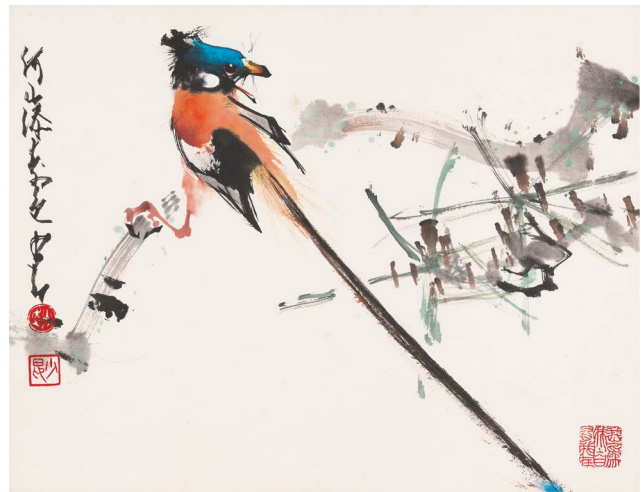
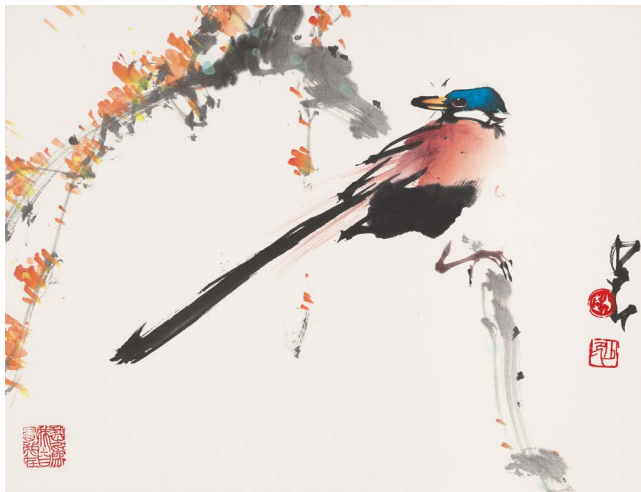
款識：一九九一，吳冠中。鈐印：吳冠中
印、九十年代

老來筋骨
非閑顏色



一九九一 吳冠中





1058

1058

ZHAO SHAO'ANG 1905-1998

FLOWERS AND BIRDS

ink and color on paper, ink and color on paper, a set of four mounted for framing

(1) signed *Shao'ang*, with two seals of the artist, *zhao, wo wei wo zi you wo zai*

(2) signed *Shao'ang*, with one seal of the artist, *zhao*

(3) signed *Shao'ang*, with three seals of the artist, *zhao, shao ang, wo wei wo zi you wo zai*

(4) signed *Shao'ang*, with three seals of the artist, *zhao, shao ang, wo wei wo zi you wo zai*

each 29 by 38 cm. 11³/₈ by 15 in. (4)

\$ 16,000-26,000

趙少昂 花鳥 水墨紙本 四幅鏡片

款識：（一）少昂。鈐印：趙、我為我自有我在

（二）少昂。鈐印：趙

（三）河山添春色。少昂。鈐印：趙、少昂、我為我自有我在

（四）少昂。鈐印：趙、少昂、我為我自有我在

1059

ZHAO SHAO'ANG 1905-1998

SPARROW PERCHING ON PEACH
BLOSSOM BRANCH

ink and color on paper, mounted for framing

signed *Shao'ang*, dated *renchen* (1952), spring,
with three seals of the artist, *zhao, shao ang,*
meng xuan tang

117.7 by 53.3 cm. 46 $\frac{3}{8}$ by 21 in.

\$ 40,000-60,000

趙少昂 桃梢只雀 設色紙本 鏡片

釋文：依然春色滿人間，花自嬌嬈鳥自閑。
避世恨無仙境在，忍看風雨遍江山。

款識：壬辰（1952）之春，東京歸後，少昂於夢萱堂之南窗下。鈐印：趙、少昂、夢萱堂



1059

PROPERTY FROM THE ESTATE OF PATRICK LUNG KONG LOTS 1060-1063

龍剛先生遺珍 拍品編號1060-1063

Patrick Lung Kong (1934-2014) was an important filmmaker in the post-war Hong Kong film industry. Despite his family's background in traditional Cantonese opera, Lung Kong developed great interests in film. He joined the Shaw Brothers Studio in the late 1950s and from there began his pursuits in filmmaking. Active during the 1960s and 70s, Lung Kong's controversial works challenged the contemporary humanistic themes of Hong Kong movie and his pioneering productions had tremendous impact on his contemporaries and later generations of rising directors in Hong Kong. *The Story of a Discharged Prisoner* (1967), one of his most representative works, was widely known as the inspiration for John Woo's masterpiece *A Better Tomorrow*.

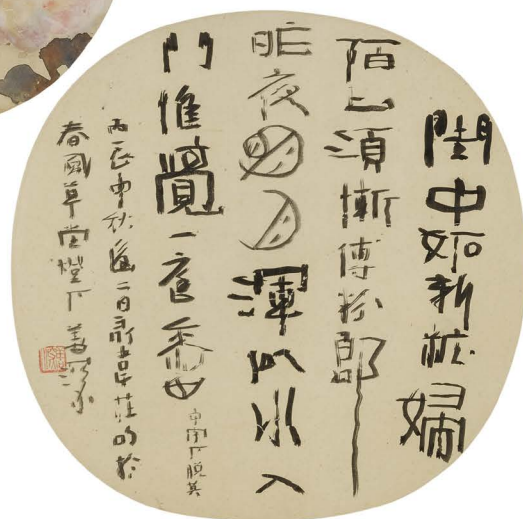
Lung Kong met Yang Shanshen (1913-2004) in the 1970s. Coming from the same Lingnan heritage, Lung Kong was already familiar with the Lingnan School of Paintings. Yang soon became his fellow mentor as well as a close friend. After moving to the United States, Lung Kong pursued further education in film at New York University, he also practiced Chinese painting and calligraphy as a hobby. Paintings from this collection were gifts from Yang Shanshen including three works dedicated directly to Lung Kong.

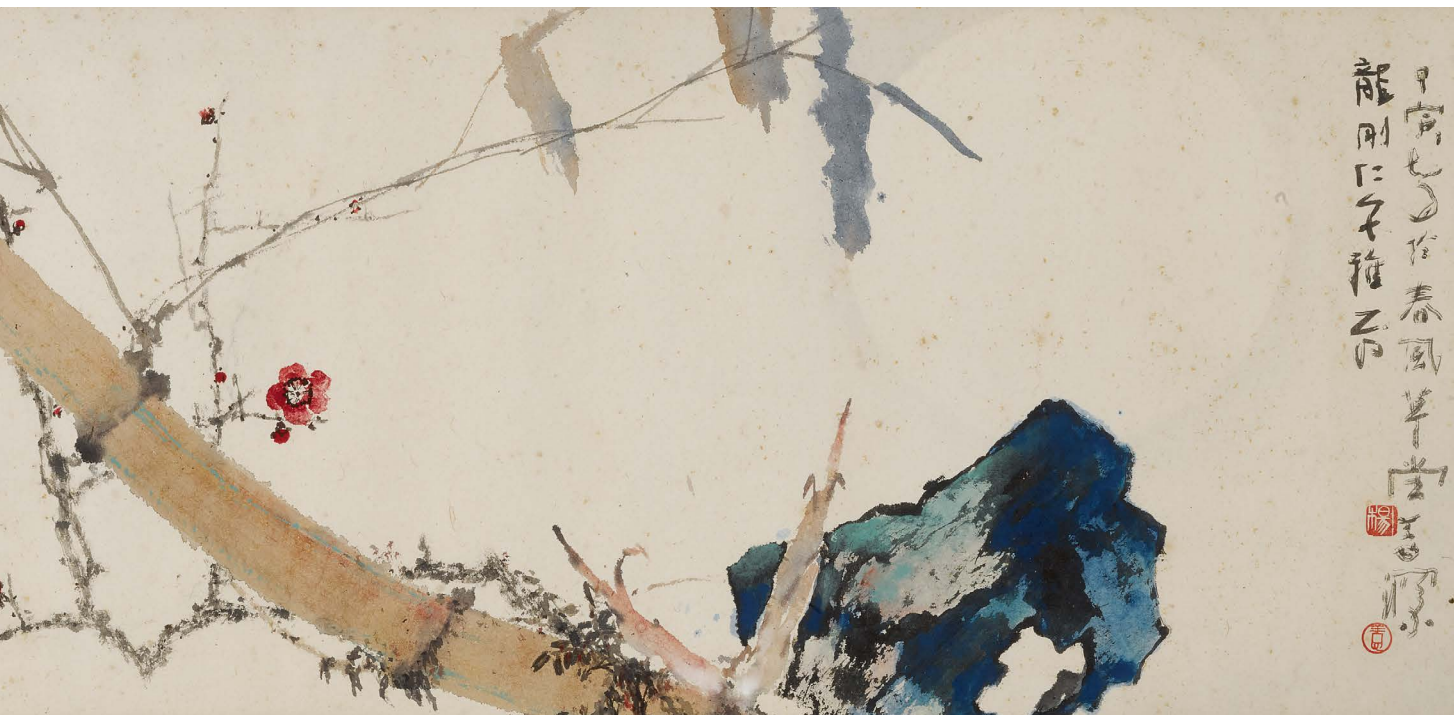
龍剛（1934-2014），香港著名導演。生於粵劇世家的龍剛一直對電影有濃厚的興趣，他於五十年代末進入邵氏訓練班繼而走上電影演員與導演的道路。活躍於上世紀六、七十年代，龍剛的作品著意深刻探討人文關懷，在當時具有很強的前瞻性，是以對同儕後輩影人均有深刻影響。其所導演的1967年版《英雄本色》更被奉為經典，為後來吳宇森版《英雄本色》的原型。

龍剛於七十年代與楊善深結識，同為嶺南人，自對嶺南繪畫風格情有獨鐘，二人亦師亦友，以不同的方式在藝術道路上探索。之後龍剛移居美國，曾在紐約大學進修電影學，亦時時提筆以自娛。是批收藏均來自楊善深先生惠贈，其中三件直接上款給龍剛。



1060





1061

1060

YANG SHANSHEN 1913-2004
PEONY AND POEM IN RUNNING
SCRIPT

ink and color on paper, a pair of framed circular fan leaves

Painting signed *Shanshen*, with a dedication to Lung Kong, and one seal of the artist, *yang*
 Calligraphy signed *Shanshen*, dated *bingchen*, two days after mid-autumn (September 10, 1976), with one seal of the artist, *shan shen*

each 23.5 by 23.8 cm. 9¼ by 9⅜ in. (2)

\$ 6,000-8,000

楊善深 牡丹、行書韋莊《白牡丹》設色紙本 一對紈扇鏡框

(畫)款識：龍剛弟屬，善深。鈐印：楊
 (書)釋文：閨中妒新粧婦，陌上須慚傅粉郎。昨夜月明渾似水，入門唯覺一庭香。(中字下脫「莫」。)

款識：丙辰(1976)中秋後二日，錄韋莊句於春風草堂燈下。善深。鈐印：善深

1061

YANG SHANSHEN 1913-2004
ROCK, BAMBOO AND FLOWERS

ink and color on paper, framed

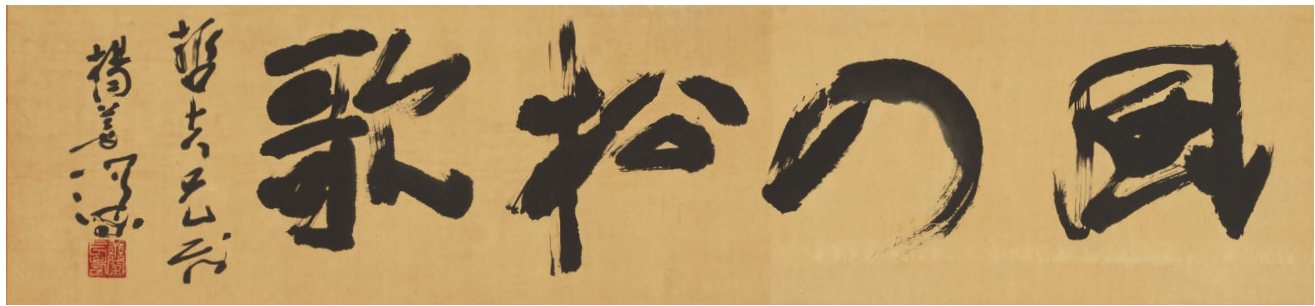
signed *Shanshen*, dated *jiayin* (1974), the seventh lunar month, with a dedication to Lung Kong, and two seals of the artist, *yang, shan xin, yuan hua chang hao*

42.5 by 120.7 cm. 16¾ by 47½ in.

\$ 15,000-25,000

楊善深 明月清風 設色紙本 鏡框

款識：甲寅(1974)七月於春風草堂，善深。龍剛仁弟雅屬。鈐印：楊、善心、願花長好



1062



1063



1062

YANG SHANSHEN 1913-2004
CALLIGRAPHY IN RUNNING SCRIPT

ink on paper, framed

signed *Yang Shanshen*, with a dedication, and one seal of the artist, *shan shen chang shou*

32.1 by 137.5 cm. 12 $\frac{3}{8}$ by 54 $\frac{1}{8}$ in.

\$ 10,000-20,000

楊善深 風月松歌 水墨紙本 鏡框

釋文：風月松歌。

款識：哲夫兄屬，楊善深。鈐印：善深長壽

1063

YANG SHANSHEN 1913-2004, ZENG ZHILIU (20TH CENTURY)

POEM IN RUNNING SCRIPT AND TWO MONKEYS ON A PINE

ink and color on paper, folding fan

Calligraphy signed *Shanshen*, dated *jiayin* (1974), August 10, with a dedication to Lung Kong, and two seals of the artist, *chun feng, shan xin*

Painting inscribed by Yang Shanshen, signed *Shanshen*, dated *jiayin*, with the same dedication, and two seals, *yang, shan shen*

19 by 46 cm. 7 $\frac{1}{2}$ by 18 in.

\$ 8,000-12,000

楊善深、曾志流 行書自作詩、彌月圖 設色紙本 成扇

(書) 釋文：何事匆匆又弄璋，忽來紅蛋與酸姜。貧叟愧我無多贈，彌月圖成紙一張。

款識：甲寅（1974）八月十日，為龍剛書。善深。鈐印：春風、善心

(畫) 題畫心：志流畫此簞，頗有意趣，龍剛見而愛之，遂為題誌。甲寅（1974），善深。鈐印：楊、善深



1064

1064

QI BAISHI 1864-1957

WISTERIA

ink and color on paper, hanging scroll

signed *Baishi*, at the age of ninety *sui*, with two seals of the artist, *mu ren, qi da*

67.3 by 33 cm. 26½ by 13 in.

\$ 45,000-55,000

齊白石 紫藤 設色紙本 立軸

款識：九十歲老人白石。鈐印：木人、齊大

1065

QI BAISHI 1864-1957

SEEKING FOOD UNDER PINE

ink and color on paper, hanging scroll

signed *Xingtang laoren houren Baishi*, with two seals of the artist, *bai shi weng, ba yan lou*

133.7 x 33.3 cm. 52¾ by 13¼ in.

PROVENANCE

Christie's New York, Fine Chinese Paintings and Calligraphy, December 11, 1987, lot 143

\$ 80,000-120,000

齊白石 松下覓食 設色紙本 立軸

款識：星塘老人後人白石。鈐印：白石翁、八硯樓

題簽：齊白石《松下覓食圖》。用乾隆三十四年九裕齋製箋。鈐印：為龍之印

來源：

紐約佳士得，中國書畫，1987年12月11日，拍品編號143



1065



1066

1066

PROPERTY FROM THE ESTATE OF SUSAN S. DILLON

CHEN YUYIN (20TH CENTURY)

BLUE AND GREEN LANDSCAPE

ink and color on paper, hanging scroll

signed *Chen Yuyin*, dated *guihai* (1983), summer, with a dedication to Mr. Dillon, inscribed with a poem, and one seal of the artist, *chen yu yin*

103.8 by 34.6 cm. 40 $\frac{7}{8}$ by 13 $\frac{5}{8}$ in.

\$ 800-1,200

蘇珊·S·狄龍遺珍

陳玉寅 青綠山水 設色紙本 立軸

款識：峻嶺巍巍連天遠，涵碧縷縷情誼近。壽高可比青山在，雄健猶勝蒼松村。癸亥（1983）仲夏，狄龍先生訪華旅蘇，詩此以贈。陳玉寅寫於吳門拙政園南舍。鈐印：陳玉寅



1067

1067

ZHANG DAQIAN (CHANG DAI-CHIEN)

1899-1983

SCHOLAR UNDER WILLOW

ink and color on paper, framed

signed *Shujun Zhang Daqian Yuan*, dated the thirty-third year of the Republic (1944), the twelfth lunar month, with a dedication to Mr. James Penfield (20th Century), with two seals of the artist, *zhang yuan*, *san qian da qian*

77.2 by 43.5 cm. 30 $\frac{3}{8}$ by 17 $\frac{1}{8}$ in.

\$ 65,000-85,000

張大千 柳下高士 設色紙本 鏡框

款識：潘飛露先生兩過予大風堂不遇，頃還美國，寫此以送其行。中華民國三十三年（1944）十二月，蜀郡張大千爰。鈐印：張爰、三千大千



1068

1068

THE TAO TING YEE AND TAO PAO VE MING COLLECTION OF CHINESE PAINTINGS AND CALLIGRAPHY

WANG YACHEN 1894-1983

LIVELY GOLDEN FISH

ink and color on paper, hanging scroll

signed *Wang Yachen*, with three seals of the artist, *wang ya chen, jing shou, yun yin ju shi wu shi hou suo zuo*

97.2 by 42.5 cm. 38¼ by 16¾ in.

\$ 5,000-7,000

陶鼎彝陶包薇明伉儷珍藏中國書畫

汪亞塵 活潑金魚 設色紙本 立軸

款識：活潑金魚。汪亞塵寫於雲隱樓。鈐印：
汪亞塵、靜壽、雲隱居士五十後所作



1069

1069

THE TAO TING YEE AND TAO PAO VE MING COLLECTION OF CHINESE PAINTINGS AND CALLIGRAPHY

WANG YACHEN 1894-1983

GOLD FISH IN A CLEAR POND

ink and color on paper, hanging scroll

signed *Yunyin jushi Yachen*, with two seals of the artist, *wang ya chen shu hua ji, zi yi*

95.3 by 33.7 cm. 37½ by 13¼ in.

\$ 5,000-7,000

陶鼎彝陶包薇明伉儷珍藏中國書畫

汪亞塵 清泓見魚 設色紙本 立軸

款識：一泓清澈見游魚。雲隱居士亞塵寫生。鈐印：
汪亞塵書畫記、自怡



1070

1070

LIU DAN B. 1953

POPPIES

ink and color on paper, framed

signed *Liu Dan*, dated *guiwei* (2003), with one seal of the artist, *ruo seng*

40.6 by 36 cm. 16 by 14 in.

PROVENANCE

Sotheby's New York, *Shuimo: Ten Thousand Blossoms Spring*, March 12-March 21, 2015, lot 1

\$ 100,000-150,000

劉丹 罌粟 設色紙本 鏡框

款識：癸未（2003）元月，劉丹畫并書。
鈐印：若僧

來源：

紐約蘇富比，水墨：萬花源季，2015年3月12日-3月21日，編號1

1071

LIU DAN B. 1953

SCHOLAR'S ROCK

ink on paper, framed

signed *Liu Dan*, dated *dinghai* (2007), with one seal of the artist, *ruo seng*

184.4 by 144.7 cm. 72 5/8 by 57 in.

EXHIBITED

China: Then and Now, Nassau County Museum of Art, November 22, 2014-March 8, 2015

PROVENANCE

China Porcelain Company, New York
Michael Goedhuis, New York

\$ 400,000-600,000

劉丹 太湖石 水墨紙本 鏡框

款識：丁亥（2007）冬，劉丹畫。鈐印：若僧

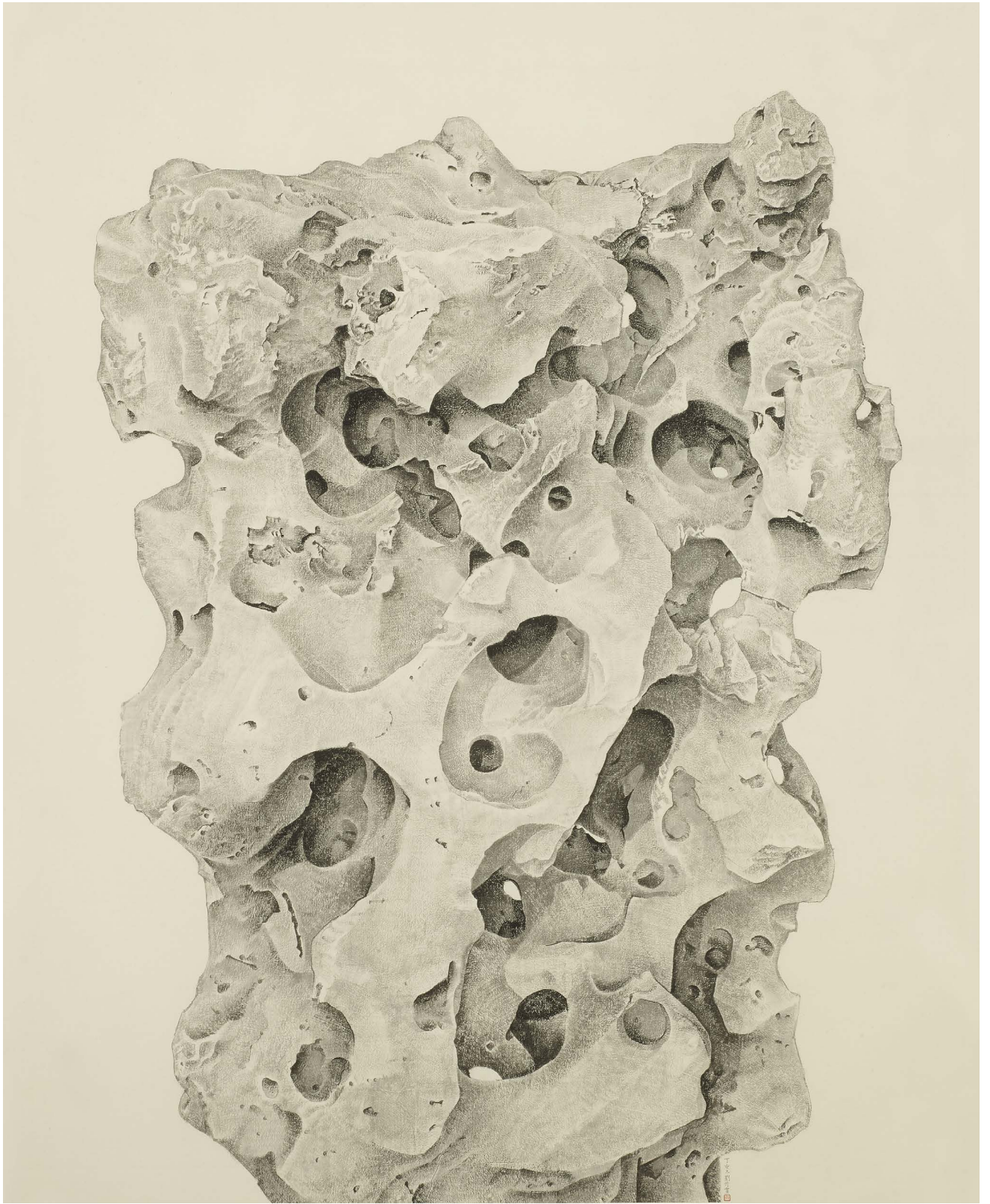
展覽：

中國：過去與現在，拿騷鄉郡藝術博物館，2014年11月22日-2015年3月8日

來源：

紐約中國瓷器公司
紐約邁克爾·葛德赫斯畫廊

END OF SALE





Property from an Important Asian American Collection
ZHANG DAQIAN
Recluse in Lofty Mountain
Estimate \$150,000–250,000

EXHIBITIONS FREE AND OPEN TO THE PUBLIC 6–14 SEPTEMBER

1334 YORK AVENUE, NEW YORK, NY 10021
ENQUIRIES +1 212 606 7332 ASIAWEEK@SOTHEBYS.COM
SOTHEBYS.COM/ASIAWEEK #SOTHEBYSASIANART

Asia Week

NEW YORK 6–14 SEPTEMBER

Modern & Contemporary South Asian Art
Online Auction 6–14 September

**Chinese Art from the
Metropolitan Museum of Art
The Florence and Herbert Irving Gift**
Auction 10 September

Junkunc
Arts of Ancient China II
Auction 10 September

Bodies of Infinite Light
Featuring an Important Collection of
Buddhist Bronze Figures Formerly in the
Collection of the Chang Foundation
Auction 10 September

A Noble Pursuit
**Important Chinese and Korean Art
from a Japanese Private Collection**
Auction 11 September

Important Chinese Art
Auction 11 September

**Fine Classical Chinese
Paintings and Calligraphy**
Auction 12 September

Saturday at Sotheby's: Asian Art
Featuring Chinese Art from the
Metropolitan Museum of Art
The Florence and Herbert Irving Gift
Auction 14 September



DOWNLOAD SOTHEBY'S APP
FOLLOW US @SOTHEBYS

ASIA WEEK

NEW YORK

紐約亞洲藝術週

March 12-19+, 2020

Asia Week New York 2020 is a collaboration among Asian art specialists, 6 auction houses, and 16 museums and Asian cultural institutions in the metropolitan New York area from March 12-19+, 2020. Simultaneous exhibitions presented by more than 40 prominent Asian art dealers from the U.S. and abroad, auctions at Bonhams, Christie's, Doyle, Heritage Auctions, iGavel, and Sotheby's as well as dozens of special events are planned for this period. All exhibitions, auctions, and events will be listed in a comprehensive illustrated guide with maps, available at the participating galleries, auction houses, and cultural institutions in February 2020 as well as on the Asia Week New York website.

www.asiaweekny.com

Sotheby's EST. 1744

PROPERTY FROM
**An Important Asian
American Collection**

To be sold in:

**Fine Classical Chinese
Paintings & Calligraphy**
Auction New York 12 September

Fine Jewels
Auction New York 25 September

Magnificent Jewels and Noble Jewels
Auction Geneva November

ENQUIRIES JEWELRY +41 22 908 4849
SOTHEBYS.COM/JEWELS #SOTHEBYSJEWELS
CHINESE PAINTINGS +1 212 894 1177
SOTHEBYS.COM/CHINESEPAINTINGS #SOTHEBYSASIANART

Sapphire and diamond bracelet, Cartier, 1927
Estimate CHF 2,000,000–3,000,000

Pair of diamond ear clips, Cartier
Estimate CHF 125,000–175,000

Zhang Daqian, *Ode To Red Cliff After Kuncan* (detail),
張大千 坡仙赤壁圖 設色絹本 鏡框 (局部)
Estimate 估價 US\$280,000–380,000



DOWNLOAD SOTHEBY'S APP
FOLLOW US @SOTHEBYS

How to Bid



1. BROWSE

Go to sothebys.com or the Sotheby's app to find works you are interested in.



2. REGISTER

Sign up to place bids.



3. BID

Bid before and during the auction, from anywhere in the world.

FOR ASSISTANCE WITH REGISTRATION AND BIDDING

Enquiries@sothebys.com

US +1 212 606 7000 **UK** +44 (0) 20 7293 5000 **HK** +852 2822 8142

sothebys.com/bidonline FOLLOW US @SOTHEBYS

CONDITIONS OF SALE

The following Conditions of Sale and Terms of Guarantee are Sotheby's, Inc. and the Consignor's entire agreement with the purchaser and any bidders relative to the property listed in this catalogue.

The Conditions of Sale, Terms of Guarantee, the glossary, if any, and all other contents of this catalogue are subject to amendment by us by the posting of notices or by oral announcements made during the sale. The property will be offered by us as agent for the Consignor, unless the catalogue indicates otherwise.

By participating in any sale, you acknowledge that you are bound by these terms and conditions.

1. As Is Goods auctioned are often of some age. The authenticity of the Authorship (as defined below) of property listed in the catalogue is guaranteed as stated in the Terms of Guarantee and except for the Limited Warranty contained therein, all property is sold "AS IS" without any representations or warranties by us or the Consignor as to merchantability, fitness for a particular purpose, the correctness of the catalogue or other description of the physical condition, size, quality, rarity, importance, medium, frame, provenance, exhibitions, literature or historical relevance of any property and no statement anywhere, whether oral or written, whether made in the catalogue, an advertisement, a bill of sale, a salesroom posting or announcement, or elsewhere, shall be deemed such a warranty, representation or assumption of liability. We and the Consignor make no representations and warranties, express or implied, as to whether the purchaser acquires any copyrights, including but not limited to, any reproduction rights in any property. We and the Consignor are not responsible for errors and omissions in the catalogue, glossary, or any supplemental material. Sotheby's will not be responsible or liable for damage to frames and glass coverings, regardless of the cause.

2. Inspection Prospective bidders should inspect the property before bidding to determine its condition, size, and whether or not it has been repaired or restored.

3. Buyer's Premium A buyer's premium will be added to the hammer price and is payable by the purchaser as part of the total purchase price. The buyer's premium is 25% of the hammer price up to and including \$400,000, 20% of any amount in excess of \$400,000 up to and including \$4,000,000, and 13.9% of any amount in excess of \$4,000,000.

4. Withdrawal We reserve the right to withdraw any property before the sale and shall have no liability whatsoever for such withdrawal.

5. Per Lot Unless otherwise announced by the auctioneer, all bids are per lot as numbered in the catalogue.

6. Bidding We reserve the right to reject any bid. The highest bidder acknowledged by the auctioneer will be the purchaser. The auctioneer has absolute and sole discretion in the case of error or dispute with respect to bidding, and whether during or after the sale, to determine the successful bidder, to re-open the bidding, to cancel the sale or to re-offer and re-sell the item in dispute. If any dispute arises after the sale, our sale record is conclusive. In our discretion we will execute order or absentee bids and accept telephone bids and online bids via BIDnow, eBay, Invaluable or other online platforms as a convenience to clients who are not present at auctions; Sotheby's is not responsible for any errors or omissions in connection therewith. Prospective bidders should also consult sothebys.com for the most up to date cataloguing of the property in this catalogue.

By participating in the sale, you represent and warrant that any bids placed by you, or on your behalf, are not the product of any collusive or other anti-competitive agreement and are otherwise consistent with federal and state antitrust law.

By participating in the sale, you represent and warrant that:

(a) The bidder and/or purchaser is not subject to trade sanctions, embargoes or any other restriction on trade in the jurisdiction in which it does business as well as under the laws of the European Union, the laws of England and Wales, or the laws and regulations of the United States, and is not owned (nor partly owned) or controlled by such sanctioned person(s) (collectively, "Sanctioned Person(s)");

(b) Where acting as agent (with Sotheby's prior written consent), the principal is not a Sanctioned Person(s) nor owned (or partly owned) or controlled by Sanctioned Person(s); and

(c) The bidder and/or purchaser undertakes that none of the purchase price will be funded by any Sanctioned Person(s), nor will any party be involved in the transaction including financial institutions, freight forwarders or other forwarding agents or any other party be a Sanctioned Person(s) nor owned (or partly owned) or controlled by a Sanctioned Person(s), unless such activity is authorized in writing by the government authority having jurisdiction over the transaction or in applicable law or regulation.

In order to bid on "Premium Lots" you must complete the required Premium Lot pre-registration application. Sotheby's decision whether to accept any pre-registration application shall be final. You must arrange for Sotheby's to receive your pre-registration application at least three working days before the sale. Please bear in mind that we are unable to obtain financial references over weekends or public holidays.

Sotheby's may require such necessary financial references, guarantees, deposits and/or such other security, in its absolute discretion, as security for your bid(s).

7. Online Bids via BIDnow or other Online Platforms: Sotheby's may offer clients the opportunity to bid online via BIDnow, eBay, Invaluable or other Online Platforms for selected sales. By participating in a

sale via any of these Online Platforms, you acknowledge that you are bound by these Conditions of Sale as well as the Additional Terms and Conditions for Live Online Bidding ("Online Terms"). By participating in a sale via any Online Platform, Bidders accept the Online Terms, as well as the relevant Conditions of Sale. Online bidding may not be available for Premium Lots.

8. Bids Below Reserve If the auctioneer determines that any opening bid is below the reserve of the article offered, he may reject the same and withdraw the article from sale, and if, having acknowledged an opening bid, he determines that any advance thereafter is insufficient, he may reject the advance.

9. Purchaser's Responsibility Subject to fulfillment of all of the conditions set forth herein, on the fall of the auctioneer's hammer, the contract between the consignor and the purchaser is concluded, and the winning bidder thereupon will immediately pay the full purchase price or such part as we may require. Title in a purchased lot will not pass until Sotheby's has received the full purchase price in cleared funds. The purchaser's obligation to immediately pay the full purchase price or such part as we may require is absolute and unconditional and is not subject to any defenses, setoffs or counterclaims of any kind whatsoever. Sotheby's is not obligated to release a lot to the purchaser until title to the lot has passed and any earlier release does not affect the passing of title or the purchaser's unconditional obligation to pay the full purchase price. In addition to other remedies available to us by law, we reserve the right to impose from the date of sale a late charge of the annual percentage rate of Prime + 6% of the total purchase price if payment is not made in accordance with the conditions set forth herein. Please note Sotheby's reserves the right to refuse to accept payment from a source other than the buyer of record.

Unless otherwise agreed by Sotheby's, all property must be removed from our premises by the purchaser at his expense not later than 30 calendar days following its sale. Purchasers are reminded that Sotheby's liability for loss of or damage to sold property shall cease upon the earlier of (a) 30 calendar days after the date of the auction and (b) our release of the property to the purchaser or the purchaser's designated agent. Upon the expiration of such 30 calendar day period or upon such earlier release, as applicable: (i) the purchaser bears full liability for any and all loss of or damage to the property; (ii) the purchaser releases Sotheby's, its affiliates, agents and warehouses from any and all liability and claims for loss of or damage to the property; and (iii) the purchaser agrees to indemnify and hold Sotheby's, its affiliates, agents and warehouses harmless from and against any and all liability for loss of or damage to property and any all claims related to loss of or damage to the property as of and from and after the time Sotheby's liability for loss or damage to the property ceases in accordance with this paragraph. If any applicable conditions herein are not complied with by the purchaser, the purchaser will be in

default and in addition to any and all other remedies available to us and the Consignor by law, including, without limitation, the right to hold the purchaser liable for the total purchase price, including all fees, charges and expenses more fully set forth herein, we, at our option, may (x) cancel the sale of that, or any other lot or lots sold to the defaulting purchaser at the same or any other auction, retaining as liquidated damages all payments made by the purchaser, or (y) resell the purchased property, whether at public auction or by private sale, or (z) effect any combination thereof. In any case, the purchaser will be liable for any deficiency, any and all costs, handling charges, late charges, expenses of both sales, our commissions on both sales at our regular rates, legal fees and expenses, collection fees and incidental damages. We may, in our sole discretion, apply any proceeds of sale then due or thereafter becoming due to the purchaser from us or any affiliated company, or any payment made by the purchaser to us or any affiliated company, whether or not intended to reduce the purchaser's obligations with respect to the unpaid lot or lots, to the deficiency and any other amounts due to us or any affiliated companies. In addition, a defaulting purchaser will be deemed to have granted and assigned to us and our affiliated companies, a continuing security interest of first priority in any property or money of or owing to such purchaser in our possession, custody or control or in the possession, custody or control of any of our affiliated companies, in each case whether at the time of the auction, the default or if acquired at any time thereafter, and we may retain and apply such property or money as collateral security for the obligations due to us or to any affiliated company of ours. We shall have all of the rights accorded a secured party under the New York Uniform Commercial Code. You hereby agree that Sotheby's may file financing statements under the New York Uniform Commercial Code without your signature. Payment will not be deemed to have been made in full until we have collected good funds. Any claims relating to any purchase, including any claims under the Conditions of Sale or Terms of Guarantee, must be presented directly to Sotheby's. In the event the purchaser fails to pay any or all of the total purchase price for any lot and Sotheby's nonetheless elects to pay the Consignor any portion of the sale proceeds, the purchaser acknowledges that Sotheby's shall have all of the rights of the Consignor to pursue the purchaser for any amounts paid to the Consignor, whether at law, in equity, or under these Conditions of Sale.

10. Reserve All lots in this catalogue are offered subject to a reserve, which is the confidential minimum hammer price at which a lot will be sold. No reserve will exceed the low presale estimate stated in the catalogue, or as amended by oral or posted notices. We may implement such reserve by opening the bidding on behalf of the Consignor and may bid up to the amount of the reserve, by placing successive or consecutive bids for a lot, or bids in response to other bidders. In

instances where we have an interest in the lot other than our commission, we may bid up to the reserve to protect such interest. In certain instances, the Consignor may pay us less than the standard commission rate where a lot is "bought-in" to protect its reserve.

11. Tax Unless exempted by law, the purchaser will be required to pay the combined New York State and local sales tax, any applicable compensating use tax of another state, and if applicable, any federal luxury or other tax, on the total purchase price. The rate of such combined tax is 8.875% in New York City and ranges from 7% to 8.625% elsewhere in New York.

12. Export and Permits It is the purchaser's sole responsibility to identify and obtain any necessary export, import, firearm, endangered species or other permit for the lot. Any symbols or notices in the sale catalogue reflect Sotheby's reasonable opinion at the time of cataloguing and are for bidders' general guidance only; Sotheby's and the Consignor make no representations or warranties as to whether any lot is or is not subject to export or import restrictions or any embargoes.

13. Governing Law and Jurisdiction These Conditions of Sale and Terms of Guarantee, as well as bidders', the purchaser's and our respective rights and obligations hereunder, shall be governed by and construed and enforced in accordance with the laws of the State of New York. By bidding at an auction, whether present in person or by agent, order bid, telephone, online or other means, all bidders including the purchaser, shall be deemed to have consented to the exclusive jurisdiction of the state courts of, and the federal courts sitting in, the State of New York. All parties agree, however, that Sotheby's shall retain the right to bring proceedings in a court other than the state and federal courts sitting in the State of New York.

14. Packing and Shipping We are not responsible for the acts or omissions in our packing or shipping of purchased lots or of other carriers or packers of purchased lots, whether or not recommended by us. Packing and handling of purchased lots is at the entire risk of the purchaser.

15. Limitation of Liability In no event will the aggregate liability of Sotheby's and the consignor to a purchaser exceed the purchase price actually paid.

16. Data Protection Sotheby's will hold and process your personal information and may share it with its subsidiaries and affiliates for use as described in, and in line with, Sotheby's Privacy Policy published on Sotheby's website at www.sothebys.com or available on request by email to enquiries@sothebys.com

Under European data protection laws, a client may object, by request and free of charge, to the processing of their information for certain purposes, including direct marketing, and may access and rectify personal data relating to them and may obtain more information

about Sotheby's data protection policies by writing to Sotheby's, 34-35 New Bond Street, London W1A 2AA, or 1334 York Avenue, New York, NY 10021, Attn: Compliance, or emailing enquiries@sothebys.com.

Please be aware that Sotheby's may film auctions or other activities on Sotheby's premises and that such recordings may be transmitted over the Internet via Sotheby's website, the eBay website, the Invaluable website and other Online Platforms. Telephone bids may be recorded.

Sotheby's use of information collected about eBay users may differ and is governed by the terms of the eBay Privacy Policy and Sotheby's on eBay Live Auction Platform Privacy Policy, which can be found on the Sotheby's on eBay Live Auction Website. Sotheby's use of information collected about Invaluable users may differ and is governed by the terms of the Invaluable Privacy Policy and Sotheby's on Invaluable Online Platform Privacy Policy, which can be found on the Sotheby's on Invaluable Live Auction Website.

TERMS OF GUARANTEE

As set forth below and in the Conditions of Sale, for all lots Sotheby's guarantees that the authorship, period, culture or origin (collectively, "Authorship") of each lot in this catalogue is as set out in the **BOLD** or **CAPITALIZED** type heading in the catalogue description of the lot, as amended by oral or written salesroom notes or announcements. Purchasers should refer to the Glossary of Terms, if any, for an explanation of the terminology used in the Bold or Capitalized type heading and the extent of the Guarantee. Sotheby's makes no warranties whatsoever, whether express or implied, with respect to any material in the catalogue other than that appearing in the Bold or Capitalized heading and subject to the exclusions below.

In the event Sotheby's in its reasonable opinion deems that the conditions of the Guarantee have been satisfied, it shall refund to the original purchaser of record the hammer price and applicable Buyer's Premium paid for the lot by the original purchaser of record.

This Guarantee is provided for a period of five (5) years from the date of the relevant auction, is solely for the benefit of the original purchaser of record at the auction and may not be transferred to any third party. To be able to claim under this Guarantee of Authorship, the original purchaser of record must: (i) notify Sotheby's in writing within three (3) months of receiving any information that causes the original purchaser of record to question the accuracy of the Bold or Capitalized type heading, specifying the lot number, date of the auction at which it was purchased and the reasons for such question; and (ii) return the Lot to Sotheby's at the original selling location in the same condition as at the date of sale to the original purchaser of record and be able to transfer good title to the Lot, free from any third party claims arising after the date of such sale.

Sotheby's has discretion to waive any of the above requirements. Sotheby's may require the original purchaser of record to obtain at the original purchaser of record's cost the reports of two independent and recognized experts in the field, mutually acceptable to Sotheby's and the original purchaser of record. Sotheby's shall not be bound by any reports produced by the original purchaser of record, and reserves the right to seek additional expert advice at its own expense. It is specifically understood and agreed that the rescission of a sale and the refund of the original purchase price paid (the successful hammer price, plus the buyer's premium) is exclusive and in lieu of any other remedy which might otherwise be available as a matter of law, or in equity. Sotheby's and the Consignor shall not be liable for any incidental or consequential damages incurred or claimed, including without limitation, loss of profits or interest.

ADDITIONAL TERMS AND CONDITIONS FOR LIVE ONLINE BIDDING

The following terms and conditions (the "Online Terms") provide important information related to live online bidding via BIDnow, eBay, Invaluable, and any other Online Platform through which bidding is made available ("Online Platforms").

These Conditions are in addition to and subject to the same law and our standard terms and conditions of sale, including the authenticity guarantee and any other terms and are not intended in any way to replace them. By participating in this sale via any Online Platform, you acknowledge that you are bound by the Conditions of Sale applicable in the relevant sale and by these additional Conditions.

1. The procedure for placing bids via Online Platforms is a one-step process; as soon as the "Bid Now" button is clicked, a bid is submitted. By placing a bid via any Online Platform, you accept and agree that bids submitted in this way are final and that you will not under any circumstances be permitted to amend or retract your bid. If a successful bid is sent to Sotheby's from your computer, phone, tablet, or any other device, you irrevocably agree to pay the full purchase price, including buyer's premium and all applicable taxes and other applicable charges.

2. If you have the leading bid, it will be indicated on the screen with the statement "Bid with you" (on BIDNow) or "You're the highest bidder" (on eBay) or "Bid with you" (on Invaluable). If a bid is placed online simultaneously with a bid placed by a bidder in the room or on the telephone (a "floor" bid), the "floor" bid generally will take precedence; the auctioneer will have the final discretion to determine the successful bidder or to reopen bidding. The auctioneer's decision is final.

3. The next bidding increment is shown on the screen for your convenience. The auctioneer has discretion to vary bidding increments for bidders in the auction room and on the telephones, but bidders using Online Platforms may not be able to place

a bid in an amount other than a whole bidding increment. All bidding for this sale will be in the domestic currency of the sale location, and online bidders will not be able to see the currency conversion board that may be displayed in the auction room.

4. The record of sale kept by Sotheby's will be taken as absolute and final in all disputes. In the event of a discrepancy between any online records or messages provided to you and the record of sale kept by Sotheby's, the record of sale will govern.

5. Online bidders are responsible for making themselves aware of all salesroom notices and announcements. All salesroom notices will be read by the auctioneer at the beginning, where appropriate, or during the sale prior to a relevant lot being offered for sale. Sotheby's recommends that online bidders log on at least ten minutes before the scheduled start of the auction to ensure that you have heard all announcements made by the auctioneer at the beginning of the sale.

6. Sotheby's reserves the right to refuse or revoke permission to bid via Online Platforms and to remove bidding privileges during a sale.

7. Purchase information shown in the "Account Activity" section of BIDnow, the "Purchase History" section of the "My eBay" page on eBay and the "Account Activity" section of the "My Invaluable" page on Invaluable is provided for your convenience only. Successful bidders will be notified and invoiced by Sotheby's after the sale. In the event of any discrepancy between any online purchase information and the invoice sent to you by Sotheby's following the respective sale, the invoice prevails. Terms and conditions for payment and collection of property remain the same regardless of how the winning bid was submitted.

8. Sotheby's offers online bidding as a convenience to our clients. Sotheby's will not be responsible for any errors or failures to execute bids placed via Online Platforms, including, without limitation, errors or failures caused by (i) a loss of connection to the internet or to the BIDnow, eBay, Invaluable or other Online Platform software by either Sotheby's or the client; (ii) a breakdown or problem with the BIDnow, eBay, Invaluable or other Online Platform software; or (iii) a breakdown or problem with a client's internet connection, mobile network or computer. Sotheby's is not responsible for any failure to execute an online bid or for any errors or omissions in connection therewith.

9. Live online bidding via all Online Platforms will be recorded.

10. In the event of any conflict between these Online Terms and Sotheby's Conditions of Sale and Terms of Guarantee, Sotheby's Conditions of Sale and Terms of Guarantee will control.

11. In the event of any conflict between these Online Terms and any term in any agreement between the User and eBay, these Online Terms will control for purposes of all Sotheby's auctions.

12. In the event of any conflict between these Online Terms and any term in any agreement between the User and Invaluable, these Online Terms will control for purposes of all Sotheby's auctions.

BUYING AT AUCTION

The following will help in understanding the auction buying process as well as some of the terms and symbols commonly used in an auction catalogue. All bidders should read the Conditions of Sale and Terms of Guarantee in this catalogue, as well as the Glossary or any other notices. By bidding at auction, bidders are bound by the Conditions of Sale and Terms of Guarantee, as amended by any oral announcement or posted notices, which together form the sale contract among Sotheby's, the seller (consignor) of the lot and any bidders, including the successful bidder (purchaser).

1. SYMBOL KEY

□ Reserves

Unless indicated by a box (□), all lots in this catalogue are offered subject to a reserve. A reserve is the confidential minimum hammer price at which a lot will be sold. The reserve is generally set at a percentage of the low estimate and will not exceed the low estimate of the lot. If any lots in the catalogue are offered without reserve, such lots will be designated by a box (□). If every lot in a catalogue is offered without a reserve, the Conditions of Sale will so state and this symbol will not be used for each lot.

○ Guaranteed Property

The seller of lots with this symbol has been guaranteed a minimum price from one auction or a series of auctions. This guarantee may be provided by Sotheby's or jointly by Sotheby's and a third party. Sotheby's and any third parties providing a guarantee jointly with Sotheby's benefit financially if a guaranteed lot is sold successfully and may incur a loss if the sale is not successful. If the Guaranteed Property symbol for a lot is not included in the printing of the auction catalogue, a pre-sale or pre-lot announcement will be made indicating that there is a guarantee on the lot.

△ Property in which Sotheby's has an Ownership Interest

Lots with this symbol indicate that Sotheby's owns the lot in whole or in part or has an economic interest in the lot equivalent to an ownership interest.

⇒ Irrevocable Bids

Lots with this symbol indicate that a party has provided Sotheby's with an irrevocable bid on the lot that will be executed during the sale at a value that ensures that the lot will sell. The irrevocable bidder, who may bid in excess of the irrevocable bid, may be compensated for providing the irrevocable bid by receiving a contingent fee, a fixed fee or both. If the irrevocable bidder is the successful bidder, any contingent fee, fixed fee or both (as applicable) for providing

the irrevocable bid may be netted against the irrevocable bidder's obligation to pay the full purchase price for the lot and the purchase price reported for the lot shall be net of any such fees. From time to time, Sotheby's may enter into irrevocable bid agreements that cover multiple lots. In such instances, the compensation Sotheby's will pay the irrevocable bidder is allocated to the lots for which the irrevocable bidder is not the successful purchaser. Under such circumstances, the total compensation to the irrevocable bidder will not exceed the total buyer's premium and other amounts paid to Sotheby's in respect of any lots for which the irrevocable bidder is not the successful bidder. If the irrevocable bid is not secured until after the printing of the auction catalogue, Sotheby's will notify bidders that there is an irrevocable bid on the lot by one or more of the following means: a pre-sale or pre-lot announcement, by written notice at the auction or by including an irrevocable bid symbol in the e-catalogue for the sale prior to the auction. From time to time, Sotheby's or any affiliated company may provide the irrevocable bidder with financing related to the irrevocable bid. If the irrevocable bidder is advising anyone with respect to the lot, Sotheby's requires the irrevocable bidder to disclose his or her financial interest in the lot. If an agent is advising you or bidding on your behalf with respect to a lot identified as being subject to an irrevocable bid, you should request that the agent disclose whether or not he or she has a financial interest in the lot.

∨ Interested Parties

Lots with this symbol indicate that parties with a direct or indirect interest in the lot may be bidding on the lot, including (i) the beneficiary of an estate selling the lot, or (ii) the joint owner of a lot. If the interested party is the successful bidder, they will be required to pay the full Buyer's Premium. In certain instances, interested parties may have knowledge of the reserve. In the event the interested party's possible participation in the sale is not known until after the printing of the auction catalogue, a pre-sale or pre-lot announcement will be made indicating that interested parties may be bidding on the lot.

⊙ Restricted Materials

Lots with this symbol have been identified at the time of cataloguing as containing organic material which may be subject to restrictions regarding import or export. The information is made available for the convenience of bidders and the absence of the symbol is not a warranty that there are no restrictions regarding import or export of the Lot; bidders should refer to Condition 12 of the Conditions of Sale. Please also refer to the section on Endangered Species in the information on Buying at Auction.

∏ Monumental

Lots with this symbol may, in our opinion, require special handling or shipping services due to size or other physical considerations. Bidders are advised to inspect the lot and to contact Sotheby's prior to the sale to discuss any specific shipping requirements.

📌 Premium Lot

In order to bid on "Premium Lots" (📌 in print catalogue or 📌 in eCatalogue) you must complete the required Premium Lot pre-registration application. You must arrange for Sotheby's to receive your pre-registration application at least three working days before the sale. Please bear in mind that we are unable to obtain financial references over weekends or public holidays. Sotheby's decision whether to accept any pre-registration application shall be final. If your application is accepted, you will be provided with a special paddle number. If all lots in the catalogue are "Premium Lots", a Special Notice will be included to this effect and this symbol will not be used.

2. BEFORE THE AUCTION

The Catalogue A catalogue prepared by Sotheby's is published for every scheduled live auction and is available prior to the sale date. The catalogue will help familiarize you with property being offered at the designated auction. Catalogues may be purchased at Sotheby's or by subscription in any categories. For information, please call +1 212 606 7000 or visit sothebys.com. Prospective bidders should also consult sothebys.com for the most up to date cataloguing of the property in this catalogue.

Estimates Each lot in the catalogue is given a low and high estimate, indicating to a prospective buyer a range in which the lot might sell at auction. When possible, the estimate is based on previous auction records of comparable pieces. The estimates are determined several months before a sale and are therefore subject to change upon further research of the property, or to reflect market conditions or currency fluctuations. Estimates should not be relied upon as a representation or prediction of actual selling prices.

Provenance In certain circumstances, Sotheby's may print in the catalogue the history of ownership of a work of art if such information contributes to scholarship or is otherwise well known and assists in distinguishing the work of art. However, the identity of the seller or previous owners may not be disclosed for a variety of reasons. For example, such information may be excluded to accommodate a seller's request for confidentiality or because the identity of prior owners is unknown given the age of the work of art.

Specialist Advice Prospective bidders may be interested in specific information not included in the catalogue description of a lot. For additional information, please contact either a Sotheby's specialist in charge of the sale (all of whom are listed in the front of the catalogue), or Sotheby's Client Services Department. You may also request a condition report from the specialist in charge.

The Exhibition An exhibition of the auction property will be held the week prior to the auction on the days listed in the front of the catalogue. There you will have the opportunity to view, inspect and evaluate the property yourself, or with the help of a Sotheby's specialist.

Salesroom Notices Salesroom notices amend the catalogue description of a lot after our catalogue has gone to press. They are posted in the viewing galleries and salesroom or are announced by the auctioneer. Please take note of them.

Registration Sotheby's may require such necessary financial references, guarantees, deposits and/or such other security, in its absolute discretion, as security for your bid. If you are not successful on any lot, Sotheby's will arrange for a refund (subject to any right of set off) of the deposit amount paid by you without interest within 14 working days of the date of the sale. Any exchange losses or fees associated with the refund shall be borne by you. Registration to bid on Premium Lots must be done at least 3 business days prior to the sale.

3. DURING THE AUCTION

The Auction Auctions are open to the public without any admission fee or obligation to bid. The auctioneer introduces the objects for sale — known as "lots" — in numerical order as listed in the catalogue. Unless otherwise noted in the catalogue or by an announcement at the auction, Sotheby's acts as agent on behalf of the seller and does not permit the seller to bid on his or her own property. It is important for all bidders to know that the auctioneer may open the bidding on any lot by placing a bid on behalf of the seller. The auctioneer may further bid on behalf of the seller, up to the amount of the reserve, by placing responsive or consecutive bids for a lot. The auctioneer will not place consecutive bids on behalf of the seller above the reserve.

Bidding in Person If you would like to bid, you must register for a paddle upon entering the salesroom. The paddle is numbered so as to identify you to the auctioneer. To register, you will need a form of identification such as a driver's license, a passport or some other type of government issued identification. If you are a first-time bidder, you will also be asked for your address, phone number and signature in order to create your account. If you are bidding for someone else, you will need to provide a letter from that person authorizing you to bid on that person's behalf. Issuance of a bid paddle is in Sotheby's sole discretion.

Once the first bid has been placed, the auctioneer asks for higher bids, in increments determined by the auctioneer. To place your bid, simply raise your paddle until the auctioneer acknowledges you. You will know when your bid has been acknowledged; the auctioneer will not mistake a random gesture for a bid.

If you wish to register to bid on a Premium Lot, please see the paragraph above.

All lots sold will be invoiced to the name and address in which the paddle has been registered and cannot be transferred to other names and addresses. Sotheby's reserves the right to refuse to accept payment from a source other than the buyer of record.

Absentee Bidding If it is not possible for you to attend the auction in person, you may place your bid ahead of time. In the back of every catalogue there is an absentee bid form, which you can use to indicate the item you wish to bid on and the maximum bid you are willing to make. Return the completed absentee bid form to Sotheby's either by mail or fax. When the lot that you are interested in comes up for sale, a Sotheby's representative will execute the bid on your behalf, making every effort to purchase the item for as little as possible and never exceeding your limit. This service is free and confidential. For detailed instructions and information, please see the Absentee Bid Form and Guide for Absentee Bidders instructions at the back of this catalogue.

Telephone Bidding In some circumstances, we offer the ability to place bids by telephone live to a Sotheby's representative on the auction floor. Please contact the Bid Department prior to the sale to make arrangements or to answer any questions you may have. Telephone bids are accepted only at Sotheby's discretion and at the caller's risk. Calls may also be recorded at Sotheby's discretion. By bidding on the telephone, prospective buyers consent thereto.

Online Bidding If you cannot attend the auction, it may be possible to bid online via BIDnow, eBay, Invaluable or other Online Platforms for selected sales. This service is free and confidential. For information about registering to bid via BIDnow, please see www.sothebys.com. For information about registering to bid on eBay, please see www.ebay.com/sothebys. For information about registering to bid on Invaluable, please see www.invaluable.com/invaluable/help.cfm. Bidders utilizing any online platform are subject to the Online Terms as well as the relevant Conditions of Sale. Online bidding may not be available for Premium Lots.

Employee Bidding Sotheby's employees may bid in a Sotheby's auction only if the employee does not know the reserve and if the employee fully complies with Sotheby's internal rules governing employee bidding.

US Economic Sanctions The United States maintains economic and trade sanctions against targeted foreign countries, groups and organizations. There may be restrictions on the import into the United States of certain items originating in sanctioned countries, including Cuba, Iran, North Korea and Sudan. The purchaser's inability to import any item into the US or any other country as a result of these or other restrictions shall not justify cancellation or rescission of the sale or any delay in payment. Please check with the specialist department if you are uncertain as to whether a lot is subject to these import restrictions, or any other restrictions on importation or exportation.

Hammer Price and the Buyer's Premium

For lots which are sold, the last price for a lot as announced by the auctioneer is the hammer price. A buyer's premium will be added to the hammer price and is payable by the purchaser as part of the total purchase price. The buyer's premium will be the amount stated in the Conditions of Sale.

Currency Board As a courtesy to bidders, a currency board is operated in many salesrooms. It displays the lot number and current bid in both U.S. dollars and foreign currencies. Exchange rates are approximations based on recent exchange rate information and should not be relied upon as a precise invoice amount. Sotheby's assumes no responsibility for any error or omission in foreign or United States currency amounts shown.

Results Successful absentee bidders will be notified after the sale. Absentee bidders will receive a list of sale results if they enclose a stamped self-addressed envelope with their absentee bid form. Printed lists of auction prices are available at our galleries approximately three weeks following each auction and are sent on request to catalogue purchasers and subscribers. Results may also be obtained online at sothebys.com.

International Auctions If you need assistance placing bids, obtaining condition reports or receiving auction results for a Sotheby's sale outside the United States, please contact our International Client Services Department.

4. AFTER THE AUCTION

Payment If your bid is successful, you can go directly to Post Sale Services to make payment arrangements. Otherwise, your invoice will be mailed to you. The final price is determined by adding the buyer's premium to the hammer price on a per-lot basis. Sales tax, where applicable, will be charged on the entire amount. Payment is due in full immediately after the sale. However, under certain circumstances, Sotheby's may, in its sole discretion, offer bidders an extended payment plan. Such a payment plan may provide an economic benefit to the bidder. Credit terms should be requested at least one business day before the sale. However, there is no assurance that an extended payment plan will be offered. Please contact Post Sale Services or the specialist in charge of the sale for information on credit arrangements for a particular lot. Please note that Sotheby's will not accept payments for purchased lots from any party other than the purchaser, unless otherwise agreed between the purchaser and Sotheby's prior to the sale.

Payment by Cash It is against Sotheby's general policy to accept payments in the form of cash or cash equivalents.

Payment by Credit Cards Sotheby's accepts payment by credit card for Visa, MasterCard, and American Express only. Credit card payments may not exceed \$50,000 per sale. Payment by credit card

may be made (a) online at <https://www.sothebys.com/en/invoice-payment.html>, (b) by calling in to Post Sale Services at +1 212 606 7444, or (c) in person at Sotheby's premises at the address noted in the catalogue.

Payment by Check Sotheby's accepts (a) personal checks and (b) certified, banker's draft and cashier's checks drawn in US Dollars with a face amount of over \$10,000 (made payable to Sotheby's). While personal and company checks are accepted, property will not be released until such checks have cleared, unless you have a pre-arranged check acceptance agreement. Application for check clearance can be made through the Post Sale Services.

Please note that certified checks, banker's drafts and cashier's checks are accepted at Sotheby's discretion and provided they are issued by a reputable financial institution governed by anti-money laundering laws. Instruments not meeting these requirements will be treated as "cash equivalents" and subject to the constraints noted in the prior paragraph titled "Payment By Cash".

Payment by Wire Transfer To pay for a purchase by wire transfer, please refer to the payment instructions on the invoice provided by Sotheby's or contact Post Sale Services to request instructions.

Sales and Use Tax New York sales tax is charged on the hammer price, buyer's premium and any other applicable charges on any property picked up or delivered in New York State, regardless of the state or country in which the purchaser resides or does business. Purchasers who wish to use their own shipper who is not a considered a "common carrier" by the New York Department of Taxation and Finance will be charged New York sales tax on the entire charge regardless of the destination of the property. Please refer to "Information on Sales and Use Tax Related to Purchases at Auction" in the back of the catalogue.

Collection and Delivery

Post Sale Services
+ 1 212 606 7444
FAX: + 1 212 606 7043
uspostalservices@sothebys.com

Once your payment has been received and cleared, property may be released. Unless otherwise agreed by Sotheby's, all purchases must be removed by the 30th calendar day following a sale.

Shipping Services Sotheby's offers a comprehensive shipping service to meet all of your requirements. If you received a shipping quotation or have any questions about the services we offer please contact us.

Collecting your Property As a courtesy to purchasers who come to Sotheby's to collect property, Sotheby's will assist in the packing of lots, although Sotheby's may, in the case of fragile articles, choose not to pack or otherwise handle a purchase.

If you are using your own shipper to collect property from Sotheby's, please provide a letter of authorization and kindly instruct

your shipper that they must provide a Bill of Lading prior to collection. Both documents must be sent to Post Sale Services prior to collection.

The Bill of Lading must include: the purchaser's full name, the full delivery address including the street name and number, city and state or city and country, the sale and lot number.

Sotheby's will contact your shipper within 24 hours of receipt of the Bill of Lading to confirm the date and time that your property can be collected. Property will not be released without this confirmation and your shipper must bring the same Bill of Lading that was faxed to Sotheby's when collecting. All property releases are subject to the receipt of cleared funds.

Please see the Conditions of Sale for further details.

Endangered Species Certain property sold at auction, for example, items made of or incorporating plant or animal materials such as coral, crocodile, ivory, whalebone, tortoiseshell, rhinoceros horn, rosewood, etc., irrespective of age or value, may require a license or certificate prior to exportation and additional licenses or certificates upon importation to another country. Sotheby's suggests that buyers check on their government wildlife import requirements prior to placing a bid. Please note that the ability to obtain an export license or certificate does not ensure the ability to obtain an import license or certificate in another country, and vice versa. It is the purchaser's responsibility to obtain any export or import licenses and/or certificates as well as any other required documentation. In the case of denial of any export or import license or of delay in the obtaining of such licenses, the purchaser is still responsible for making on-time payment of the total purchase price for the lot.

Although licenses can be obtained to export some types of endangered species, other types may not be exported at all, and other types may not be resold in the United States. Upon request, Sotheby's is willing to assist the purchaser in attempting to obtain the appropriate licenses and/or certificates. However, there is no assurance that an export license or certificate can be obtained. Please check with the specialist department or the Shipping Department if you are uncertain as to whether a lot is subject to these export/import license and certificate requirements, or any other restrictions on exportation.

The Art Loss Register As part of Sotheby's efforts to support only the legitimate art market and to combat the illegitimate market in stolen property, Sotheby's has retained the Art Loss Register to check all uniquely identifiable items offered for sale in this catalogue that are estimated at more than the equivalent of US\$1,500 against the Art Loss Register's computerized database of objects reported as stolen or lost. The Art Loss Register is pleased to provide purchasers with a certificate confirming that a search has been made. All inquiries regarding search certificates should be directed to The Art

Loss Register, First Floor, 63-66 Hatten Garden, London EC1N 8LE or by email at artloss@artloss.com. The Art Loss Register does not guarantee the provenance or title of any catalogued item against which they search, and will not be liable for any direct or consequential losses of any nature howsoever arising. This statement and the ALR's service do not affect your rights and obligations under the Conditions of Sale applicable to the sale.

SELLING AT AUCTION

If you have property you wish to sell, Sotheby's team of specialists and client services representatives will assist you through the entire process. Simply contact the appropriate specialist (specialist departments are listed in the back of this catalogue), General Inquiries Department or a Sotheby's regional office representative for suggestions on how best to arrange for evaluation of your property.

Property Evaluation There are three general ways evaluation of property can be conducted:

(1) In our galleries

You may bring your property directly to our galleries where our specialists will give you auction estimates and advice. There is no charge for this service, but we request that you telephone ahead for an appointment. Inspection hours are 9:30 am to 5 pm, Monday through Friday.

(2) By photograph

If your property is not portable, or if you are not able to visit our galleries, you may bring in or send a clear photograph of each item. If you have a large collection, a representative selection of photographs will do. Please be sure to include the dimensions, artist's signature or maker's mark, medium, physical condition and any other relevant information. Our specialists will provide a free preliminary auction estimate subject to a final estimate upon first-hand inspection.

(3) In your home

Evaluations of property can also be made in your home. The fees for such visits are based on the scope and diversity of property, with travel expenses additional. These fees may be rebated if you consign your property for sale at Sotheby's. If there is considerable property in question, we can arrange for an informal "walkthrough."

Once your property has been evaluated, Sotheby's representatives can then help you determine how to proceed should you wish to continue with the auction process. They will provide information regarding sellers' commission rates and other charges, auction venue, shipping and any further services you may require.

SOTHEBY'S SERVICES

Sotheby's also offers a range of other services to our clients beyond buying and selling at auction. These services are summarized below. Further information on any of the services described below can be found at sothebys.com.

Valuations and Appraisals Sotheby's Valuations and Appraisals Services offers advice regarding personal property assets to trusts, estates, and private clients in order to help fiduciaries, executors, advisors, and collectors meet their goals. We provide efficient and confidential advice and assistance for all appraisal and auction services. Sotheby's can prepare appraisals to suit a variety of needs, including estate tax and planning, insurance, charitable contribution and collateral loan. Our appraisals are widely accepted by the Internal Revenue Service, tax and estate planning professionals, and insurance firms. In the event that a sale is considered, we are pleased to provide auction estimates, sales proposals and marketing plans. When sales are underway, the group works closely with the appropriate specialist departments to ensure that clients' needs are met promptly and efficiently.

Financial Services Sotheby's offers a wide range of financial services including advances on consignments, as well as loans secured by art collections not intended for sale.

Museum Services Tailored to meet the unique needs of museums and nonprofits in the marketplace, Museum Services offers personal, professional assistance and advice in areas including appraisals, deaccessions, acquisitions and special events.

Corporate Art Services Devoted to servicing corporations, Sotheby's Corporate Art Services Department can prepare appraisal reports, advise on acquisitions and deaccessions, manage all aspects of consignment, assist in developing arts-management strategies and create events catering to a corporation's needs.

INFORMATION ON SALES AND USE TAX RELATED TO PURCHASES AT AUCTION

To better assist our clients, we have prepared the following information on Sales and Use Tax related to property purchased at auction.

Why Sotheby's Collects Sales Tax

Virtually all State Sales Tax Laws require a corporation to register with the State's Tax Authorities and collect and remit sales tax if the corporation either establishes or maintains physical or economic presence within the state. In the states that impose sales tax, Tax Laws require an auction house, with such presence in the state, to register as a sales tax collector, and remit sales tax collected to the state. New York

sales tax is charged on the hammer price, buyer's premium and any other applicable charges on any property picked up or delivered in New York, regardless of the state or country in which the purchaser resides or does business.

Where Sotheby's Collects Sales Tax

Sotheby's is currently registered to collect sales tax in the following states: Alabama, Arkansas, California, Colorado, Connecticut, District of Columbia, Florida, Georgia, Hawaii, Idaho, Illinois, Indiana, Iowa, Kentucky, Maine, Maryland, Massachusetts, Michigan, Minnesota, Missouri, Nebraska, Nevada, New Jersey, New Mexico, New York, North Carolina, Ohio, Oklahoma, Pennsylvania, Rhode Island, South Carolina, Texas, Utah, Vermont, Virginia, Washington, Wisconsin and Wyoming. For any property collected or received by the purchaser in New York City, such property is subject to sales tax at the existing New York State and City rate of 8.875%.

Sotheby's Arranged Shipping If the property is delivered into any state in which Sotheby's is registered, Sotheby's is required by law to collect and remit the appropriate sales tax in effect in the state where the property is delivered.

Client Arranged Shipping Property collected from Sotheby's New York premises by a common carrier hired by the purchaser for delivery at an address outside of New York is not subject to New York Sales Tax, but if the property is delivered into any state in which Sotheby's is registered, Sotheby's is required by law to collect and remit the appropriate sales tax in effect in the state where the property is delivered. New York State recognizes shippers such as the United States Postal Service, United Parcel Service, FedEx, or the like as "common carriers". If a purchaser hires a shipper other than a common carrier to pick up property, Sotheby's will collect New York sales tax at a rate of 8.875% regardless of the ultimate destination of the goods. If a purchaser utilizes a freight-forwarder who is registered with the Transportation Security Administration ("TSA") to deliver property outside of the United States, no sales tax would be due on this transaction.

Where Sotheby's is Not Required to Collect Sales Tax

Sotheby's is not required to collect sales tax on property delivered to states other than those listed above. If the property is delivered to a state where Sotheby's is not required to collect sales tax, it is the responsibility of the purchaser to self-assess any sales or use tax and remit it to taxing authorities in that state.

Sotheby's is not required to collect sales tax for property delivered to the purchaser outside of the United States.

Restoration and Other Services

Regardless of where the property is subsequently transported, if any framing or restoration services are performed on the property in New York, it is considered to be a delivery of the property to the purchaser in New York, and Sotheby's will be required to collect the 8.875% New York sales tax.

Certain Exemptions Most states that impose sales taxes allow for specified exemptions to the tax. For example, a registered re-seller such as a registered art dealer may purchase without incurring a tax liability, and Sotheby's is not required to collect sales tax from such re-seller. The art dealer, when re-selling the property, may be required to charge sales tax to its client, or the client may be required to self-assess sales or use tax upon acquiring the property.

Local Tax Advisors As sales tax laws vary from state to state, Sotheby's recommends that clients with questions regarding the application of sales or use taxes to property purchased at auction seek tax advice from their local tax advisors.

IMPORTANT NOTICES

Property Collection All property that is sold, has bought in, or is to be returned to the consignor will remain at 1334 York Avenue for collection. Exceptions to this policy may include property considered to be oversized and monumental works of art. Invoices and statements will indicate your property's location. Refer to our Property Collection information at www.sothebys.com/pickup.

Property Payment All property must be paid in full before collection or release from any Sotheby's location. Payment must be made through Sotheby's New York Post Sale Services by way of our acceptable forms of payment methods mentioned on your invoice. To arrange for payment, please contact Post Sale Services at +1 212 606 7444 or USPostSaleServices@sothebys.com. Payment will not be accepted at the offsite facility. Dealers and resale clients should fill out the appropriate forms where applicable or contact Post Sale Services with any questions.

Loss and Liability Unless otherwise agreed by Sotheby's, all sold property must be removed from any of our premises (including the SLP Warehouse) by the buyer at their expense no later than 30 calendar days following its sale. Buyers are reminded that Sotheby's liability for loss or damage to sold property shall cease no later than 30 calendar days after the date of the auction.

Collection & Shipping Where applicable, the SLP Warehouse requires 24 hours advanced notice for collection of property. Please arrange this through our Post Sale Services team at +1 212 606 7444 or USPostSaleServices@sothebys.com.

For in-person collections at our offsite location, please alert Post Sale Services of your proposed collection date, ensure that all outstanding invoices have been paid for, and that you or your agent have the appropriate photo identification upon arrival.

If you are using your own shipper to collect property, please provide a letter of authorization and instruct your shipper to email their bill of lading to billsoflading@sothebys.com and ensure the correct collection location is specified.

Sotheby's can arrange for delivery of your property through one of our contracted vendors or can coordinate pick up at our offsite location with you or your shipper directly. Please contact Post Sale Services at +1 212 606 7444 or USPostSaleServices@sothebys.com to start your collection process.

Important Notice Regarding Packing

As a courtesy to purchasers who come to Sotheby's to pick up property, Sotheby's will assist in packing framed paintings. Sotheby's is unable to remove canvases off stretchers or to roll works on paper. Purchasers are advised to contact an independent painting restorer to pack works in this manner.

Notice Regarding Endangered Species

• Property containing certain endangered species will require a CITES license upon export from the U.S. and may require an additional license upon import into another country. There is no guarantee that such licenses will be granted. In the case of denial of any license or of delay in obtaining such licenses, the purchaser remains responsible for making on-time payment for the total purchase price.

Absence of Guarantee of Authenticity for Chinese Paintings

The artists' names recorded in this catalogue are not to be taken as unqualified attributions to the artists named. No unqualified attributions to any artist or date are made or intended. The current scholarship in the field of Chinese paintings does not permit unqualified statements as to authorship or date of execution. Therefore, none of the paintings in this catalogue is subject to any guarantee of authenticity and all the property is sold "AS IS". Any reference to the Terms of Guarantee does not apply to Chinese paintings. Any assistance given by Sotheby's staff to a buyer in selecting a purchase is given without prejudice to the above. Buyers are recommended to take independent professional advice on selection of purchases.

Photography:

Glenn Steigelman
Scott Elam
Ellen Warfield
Bonnie Morrison

INTERNATIONAL DEPARTMENTS

For a full listing of our offices and salerooms worldwide with detailed information on all of Sotheby's services, visit sothebys.com

INTERNATIONAL CHINESE PAINTINGS DEPARTMENTS

New York

Classical Chinese Paintings

Xian Fang

Molly Huang

+1 212 894 1177

Hong Kong

Classical Chinese Paintings

Steven Zuo

Rongde Zhang*

Sally Fong

Alex Weng

+852 2822 9013

Chinese Paintings

Carmen Ip

C.K. Cheung ‡

Jing Jing Qiao

Annie Wong

+852 2822 8132

Taipei

Shuni Li

+886 2 2757 6689

* Based in New York

INTERNATIONAL CHINESE CERAMICS AND WORKS OF ART DEPARTMENTS

Worldwide Head & Chairman

Nicolas Chow

+852 2822 8123

Chairman, Asian Art, Europe and Americas

Henry Howard-Sneyd

+44 20 7293 5530

International Specialists

Julian King

Carrie Li

+852 2822 8128

Senior Specialist, Europe

Dr. Caroline Schulten

+33 1 5305 5242

International Research

Regina Krahl ‡

Jungeun Lee

Isabella Tedeschi

Hwee Lie The ‡

+44 20 7293 5879

New York

Angela McAteer

Christina Prescott-Walker

Phyllis Kao

Hang Yin

Tiffany Chao

Justin Cheung

Louise Lui

Mee-Seen Loong ‡

Cynthia Volk ‡

+1 212 606 7332

London

Dr. Caroline Schulten

Stephen Loakes

Cherrei Tian

Gordon Lo

+44 20 7293 6442

Paris

Dr. Caroline Schulten

Olivier Valmier

Joan Yip

+33 1 5305 5242

Hong Kong

Nicolas Chow

Sam Shum

Christian Bouvet

Amethyst Chau

Vivian Tong

Carmen Li

Cristine Li

+852 2822 8128

Beijing

Peter Song

+86 10 6408 8933

Taipei

Ching Yi Huang

+886 2 2757 6689

Tokyo

Mizuka Seya

+81 3 6457 9160

INTERNATIONAL INDIAN, HIMALAYAN AND SOUTHEAST ASIAN DEPARTMENTS

Deputy Chairman

Yamini Mehta

+44 20 7293 5940

New York

Works of Art

Anuradha Ghosh-Mazumdar

Allison Rabinowitz

+1 212 606 7304

Modern & Contemporary Art

Anuradha Ghosh-Mazumdar

Manjari Sihare-Sutin

+1 212 606 7304

London

Middle East and Islamic Art

Edward Gibbs, Chairman

Benedict Carter

Alexandra Roy

Chiara de Nicolais

+44 20 7293 5112

Indian Art

Yamini Mehta

Ishrat Kanga

+44 20 7293 5940

Mumbai

Shivajirao Gaekwar

+91 66 6665 3789

Paris

Dr. Caroline Schulten

+33 1 5305 5242

Hong Kong

Mok Kim Chuan

Rishika Assomull

+852 2822 5544

Singapore

Mok Kim Chuan

Michelle Yaw

Melissa Chua

+65 6732 8239

Taipei

Claire Liao

+886 2 2757 6689

INTERNATIONAL JAPANESE ART DEPARTMENT

London

Mark Hinton

Sono Werhahn

+44 20 7293 6537

LIAISON OFFICES

Bangkok

Wannida Saetieo

+66 2253 3160

Beijing

Peter Song

Ying Wang

+86 10 6408 8771

Brussels

Marianna Lora

+32 2 627 71 98

Jakarta

Jasmine Prasetyo

+62 21 5797 3603

Kuala Lumpur

Walter Cheah ‡

+60 3 2070 0319

Los Angeles

Hannah Thompson

+1 310 786 1876

Mumbai

Shanavas Edaparambil

+91 22 6665 3407

Philippines

Angela Hsu ‡

+63 917 815 0075

Shanghai

Rachel Shen

+86 21 6288 7500

Singapore

Esther Seet

+65 6732 8239

Taipei

Wendy Lin

+81 3 6457 9160

Tokyo

Yasuaki Ishizaka

+81 3 3230 2755

Toronto

Lucila Portoraro

+41 69 261 774

Consultant ‡

INDEX OF ARTISTS

Anonymous	無款	1011, 1012, 1014, 1015, 1016, 1018
Bai Jiao	白蕉	1029
Bian Shoumin	邊壽民	1022
Attributed to Chen Ruyan	陳汝言 (款)	1009
Chen Yuyin	陳玉寅	1066
Dai Yi	戴彝	1043
Ding Yanyong	丁衍庸	1054
Dong Qichang	董其昌	1017, 1023
Dong Shouping	董壽平	1046
Feng Chaoran	馮超然	1036
Fu Baoshi	傅抱石	1053
Gao Qipei	高其佩	1008
Gu Linshi	顧麟士	1037
Gu Luo	顧洛	1043
He Shaoji	何紹基	1026
Huang Junbi	黃君璧	1033
Huang Yue	黃鉞	1042
Huang Zhou	黃胄	1055
Husou Duan	湖叟端	1043
Jiang Zhou	蔣洲	1043
Liang Tongshu	梁同書	1021
Liu Dan	劉丹	1070, 1071
Attributed to Mi Fu	米芾 (款)	1020
Ni Tian	倪田	1042
Pan Gongshou	潘恭壽	1010
Pu Hua	蒲華	1031 1044
Pu Ru	溥儒	1030, 1034, 1040, 1052, 1056
Qi Baishi	齊白石	1064, 1065
Qian Hui'an	錢慧安	1002
Attributed to Qiu Ying	仇英 (款)	1019
Sun Yi	孫億	1007
Wang Jiqian (C. C. Wang)	王季遷	1013, 1032
Wang Yachen	汪亞塵	1068, 1069
Wu Changshuo	吳昌碩	1038, 1045
Wu Guanzhong	吳冠中	1057
Wu Hufan	吳湖帆	1051
Wu Li	吳歷	1005
Yang Shanshen	楊善深	1060, 1061, 1062, 1063
Zeng Zhiliu	曾志流	1063
Zhang Daqian (Chang Dai-chien)	張大千	1027, 1035, 1039, 1041, 1047 1048 1049, 1050, 1067
Zhang Qia	張洽	1003
Zhang Xiong	張熊	1001
Zhao Shao'ang	趙少昂	1058, 1059
Zhao Zhichen	趙之琛	1006
Zhu Angzhi	朱昂之	1004
Zhu Yunming	祝允明	1028
Zou Zhilin	鄒之麟	1024, 1025

BOARD OF DIRECTORS

Domenico De Sole

Chairman of the Board

The Duke of Devonshire

Deputy Chairman of the Board

Tad Smith

President and

Chief Executive Officer

Jessica Bibliowicz

Linus W. L. Cheung

Kevin Conroy

Daniel S. Loeb

Marsha E. Simms

Diana L. Taylor

Dennis M. Weibling

Harry J. Wilson

Michael J. Wolf

David Schwartz

Corporate Secretary

**SOTHEBY'S EXECUTIVE
MANAGEMENT**

John Auerbach

**Art & Objects Division, Americas
Digital Businesses, Worldwide**

Jill Bright

**Human Resources
& Administration
Worldwide**

Amy Cappellazzo

Chairman

Fine Art Division

Valentino D. Carlotti

**Business Development
Worldwide**

John Cahill

**Chief Commercial Officer
Worldwide**

Kevin Ching

**Chief Executive Officer
Asia**

Ken Citron

**Operations & Chief
Transformation Officer
Worldwide**

Lauren Gioia

**Communications
Worldwide**

Mike Goss

Chief Financial Officer

Jane Levine

**Chief Compliance Counsel
Worldwide**

Jonathan Olsoff

**General Counsel
Worldwide**

Jan Prasens

**Managing Director
Europe, Middle East, Russia,
India and Africa**

Allan Schwartzman

**Chairman
Fine Art Division**

Patti Wong

**Chairman
Asia**

**SOTHEBY'S INTERNATIONAL
COUNCIL**

Robin Woodhead

Chairman

Jean Fritts

Deputy Chairman

John Marion

Honorary Chairman

Juan Abelló

Judy Hart Angelo

Anna Catharina Astrup

Nicolas Berggruen

Philippe Bertherat

Lavinia Borromeo

Dr. Alice Y.T. Cheng

Laura M. Cha

Halit Cingilioğlu

Jasper Conran

Henry Cornell

Quinten Dreesmann

Ulla Dreyfus-Best

Jean Marc Etlin

Tania Fares

Comte Serge de Ganay

Ann Getty

Yassmin Ghandehari

Charles de Gunzburg

Ronnie F. Heyman

Shalini Hinduja

Pansy Ho

Prince Aynn Aga Khan

Catherine Lagrange

Edward Lee

Jean-Claude Marian

Batia Ofer

Georg von Opel

Marchesa Laudomia Pucci Castellano

David Ross

Patrizia Memmo Ruspoli

Rolf Sachs

René H. Scharf

Biggi Schuler-Voith

Judith Taubman

Olivier Widmaier Picasso

The Hon. Hilary M. Weston,

CM, CVO, OOnt

CHAIRMAN'S OFFICE**AMERICAS**

Lisa Dennison

Benjamin Doller

George Wachter

Thomas Bompard

Lulu Creel

Nina del Rio

Mari-Claudia Jimenez

Brooke Lampley

Gary Schuler

Simon Shaw

Lucian Simmons

August Uribe

EUROPE

Oliver Barker

Helena Newman

Mario Tavella

Alex Bell

Michael Berger-Sandhofer

David Bennett

Lord Dalmeny

Claudia Dwek

Edward Gibbs

George Gordon

Franka Haiderer

Henry Howard-Sneyd

Caroline Lang

Cedric Lienart

Daniela Mascetti

Wendy Philips

Lord Poltimore

Samuel Valette

Albertine Verlinde

Roxane Zand

ASIA

Patti Wong

Nicolas Chow

Lisa Chow

Jen Hua

Yasuaki Ishizaka

Wendy Lin

Rachel Shen



Sotheby's EST. 1744
Collectors gather here.